



October 10, 2014

Scott Miller
Remedial Project Manager
Superfund Remedial Branch, Section C
U.S. Environmental Protection Agency, Region 4
61 Forsyth Street SW
Atlanta, GA 30303-8909

VIA EMAIL

Subject: **September 2014 Monthly Progress Report**

Dear Mr. Miller:

On behalf of Beazer East, Inc. (Beazer), attached is the September 2014 Monthly Progress Report for the Koppers portion of the Cabot/Koppers Superfund Site in Gainesville, Florida. If you have any questions or comments, please contact me.

Sincerely,

A handwritten signature in blue ink, appearing to read 'Gregory W. Council'.

Gregory W. Council, P.E.
Principal Engineer

cc: Rusty Kestle, EPA
Kelsey Helton, FDEP
John Mousa, ACEPD
Kristie Williams, City of Gainesville
Yvette Carter, City of Gainesville
Rick Hutton, GRU
Carrie McCoy, Black & Veatch
Josh Hayes, J.M. Waller
John Herbert, GeoHydro Consultants
Patricia Cline, Community Technical Advisor
Linda Paul, Koppers, Inc.
Mitchell Brouman, TRMI
Mike Slenska, TRMI
Donna Kopach, TRMI
Jim Erickson, Tetra Tech

September 2014
MONTHLY PROGRESS REPORT
Cabot/Koppers Superfund Site
Gainesville, Florida

1. Compliance Actions:

- Beazer's Operation and Maintenance (O&M) Contractor performed routine treatment plant O&M services for the groundwater extraction and pretreatment system.
- Remedial Design and Remedial Action activities are presently being conducted.

2. Sampling/Test Results and Data:

- Instantaneous flow rates and totalizer volumes were measured in each extraction well.
- The bi-weekly passive NAPL recovery program continues at Upper Hawthorn monitoring wells: 2.05 gallons of NAPL were removed from Upper Hawthorn wells during the past month (2 recovery events). A total of 576 gallons have been removed since the start of the NAPL recovery program on June 19, 2004. Table 1 provides details of the NAPL recovery volumes by well and date.
- In addition, NAPL was removed from 25 temporary injection points (TIPs) installed in the Former Process Area as part of the In-Situ Geochemical Stabilization (ISGS) program (Table 2). This is a pilot demonstration for full scale design. Two NAPL recovery events were conducted during the month, resulting in a total of 110.2 gallons removed.
- NAPL was removed from five Upper Hawthorn recovery wells installed in the Former Process Area as part of the ISGS program (Table 3). Two NAPL recovery events were conducted during the month, resulting in 28.6 gallons removed.
- A total of 3,748,176 gallons of groundwater were recovered by the Surficial Aquifer drains and extraction well system (both Surficial Aquifer and UFA) during the past month (system run time of 674.5 hours). The average recovery rate for the month was approximately 92.6 gallons per minute (gpm). The recovery for each component is listed below.
 - Surficial Aquifer
 - Perimeter Extraction Wells: 609,904 gallons
 - Former North Lagoon Drain: 479,280 gallons
 - Former Drip Track Drain: 379,218 gallons
 - Former Process Area Drain: 263,490 gallons
 - Former South Lagoon Drain: 399,170 gallons
 - Upper Floridan Extraction Wells
 - FW-6: 42,460 gallons
 - FW-21B: 132,858 gallons
 - FW-31BE: 965,320 gallons
 - FW-32BE: 476,476 gallons

Approximately 342 million gallons have been recovered from the Surficial Aquifer extraction wells and four drains since the start of the Surficial Aquifer containment system in January 1995.

For the month, the total volume of water treated and discharged to the GRU wastewater system was 3,113,700 gallons. The remaining portion of the water, from Upper Floridan Aquifer wells, was treated and used for on-Property irrigation.

The Former South Lagoon and Former Process groundwater drain pumps were turned off for approximately 5.5 hours to pump and clean clarifiers and to treat backwash water.

3. Plans, Reports, Deliverables and Procedures Completed:

- Off-Property soil replacement at Blocks A-K of the Stephen Foster Neighborhood.
- Remedial Design/Remedial Action Status Update Meeting (EPA/Beazer) September 22, 2014.
- Periodic maintenance checks and inspections.
- Treatment-plant component maintenance and repair as needed (caustic pump, carbon vessel gaskets and gauges, sludge pump diverter valve, bag filter vessel).
- Replaced EW-2 pump and cleaned flow meter three times.
- Replaced EW-15 and EW-16 flow meters.
- Repaired damaged piping
- Supplemental soil sampling at properties J10, J11, and J04 on September 5 and 8, 2014.
- Irrigation Breakthrough sampling on Sept 9, 2014.
- Stormwater sampling Sept 16, 2014.
- TSE sampling Sept 25, 2014.
- On-property irrigation using treated groundwater from FW-6, FW-21B, FW-31BE, and FW-32BE.

4. Upcoming Actions:

- Off-Property Remedial Action at Block J.
- NAPL collection at Upper Hawthorn monitoring wells: bi-weekly.
- NAPL collection at temporary Upper Hawthorn ISGS injection points: bi-weekly.
- Routine inspection, operation, maintenance, and monitoring.
- Fourth quarter sampling event: Dec 1 - 5, 2014.

5. Schedule Status:

- The current remedial design schedule is attached.
- No significant delays were encountered during the reporting period.

6. Plan/Schedule Modifications:

- The schedule has been updated to reflect minor adjustments.

7. Community Involvement:

- Tetra Tech's Community Coordinator has been in touch with many residents and property owners in the Stephen Foster neighborhood, and has been working closely with the city's community coordinators for the Stephen Foster soil replacement work.
- Future community involvement activities will be coordinated with EPA.

Table 1. DNAPL Recovery - Hawthorn Group Monitoring Wells

| Well ID | Total Last Month (gal) (2 events) August 2014 | DNAPL Volume (gal) 9/7/2014 | DNAPL Volume (gal) 9/21/2014 | Total This Month (gal) September 2014 |
|------------------|--|--------------------------------|---------------------------------|--|
| HG-9S | 0 | Stain | Stain | 0 |
| HG-10S | 0 | Stain | Stain | 0 |
| HG-10D | 0 | Stain | Stain | 0 |
| HG-11S | 0.7 | 0.3 | 0.3 | 0.6 |
| HG-12S | 0.65 | 0.3 | 0.3 | 0.6 |
| HG-12D | 0 | ND | ND | 0 |
| HG-15S | 0.5 | 0.2 | 0.2 | 0.4 |
| HG-16S | 0 | 0.3 | 0.15 | 0.45 |
| HG-16D | 0 | Stain | Stain | 0 |
| MW-22B | 0 | Stain | Stain | 0 |
| Total | 1.85 | 1.1 | 0.95 | 2.05 |
| Cumulative Total | 573.81 | | | 575.86 |

ND - No DNAPL Detected

Table 2. DNAPL Recovery Temporary Injection Points (TIPs)

| Well ID | Total Last Month (gal) (2 events) | DNAPL Volume (gal) | | Total This Month (gal) |
|-------------|-----------------------------------|--------------------|-----------|------------------------|
| | August 2014 | 9/9/2014 | 9/24/2014 | September 2014 |
| 220N 180E | 5.2 | 2.4 | 2.5 | 4.9 |
| 280N 380E | 6.7 | 3.5 | 3.2 | 6.7 |
| 300N 180E | 9.3 | 5.4 | 5.2 | 10.6 |
| 300N 420E | 6.8 | 3.3 | 3.4 | 6.7 |
| 320N 220E | 6.3 | 2.9 | 3.1 | 6 |
| 320N 300E | 6.1 | 2.9 | 2.9 | 5.8 |
| 340N 340E | 11.8 | 4.6 | 4.8 | 9.4 |
| 360N 280E | 7.75 | 3.8 | 3.7 | 7.5 |
| 380N 340E | 11.7 | 5.8 | 5.9 | 11.7 |
| 400N 380E | 2.2 | 1.1 | 1.1 | 2.2 |
| 460N 340E | 2.8 | 1.4 | 1.5 | 2.9 |
| 420N 340E * | 7.8 | 4.3 | 4.5 | 8.8 |
| 220N 340E | 1.9 | 0.9 | 0.9 | 1.8 |
| 240N 380E | 3.1 | 1.4 | 1.5 | 2.9 |
| 340N 180E | 1.3 | 0.2 | 0.3 | 0.5 |
| 320N 140E | 1.2 | 0.6 | 0.6 | 1.2 |
| 300N 260E | 2 | 1.1 | 1.1 | 2.2 |
| 360N 140E | 0.4 | 0.2 | 0.2 | 0.4 |
| 400N 140E | 0.35 | 0.3 | 0.2 | 0.5 |
| 200N 220E | 1.6 | 0.7 | 0.7 | 1.4 |
| 280N 220E | 2 | 1 | 1.1 | 2.1 |
| 360N 220E | 2.9 | 1.3 | 1.2 | 2.5 |
| 280N 300E | 2.3 | 1.4 | 1.3 | 2.7 |
| 360N 380E | 6.1 | 4.4 | 3.6 | 8 |
| Drip Track | 0.7 | 0.4 | 0.4 | 0.8 |
| Total | 110.3 | | | 110.2 |

NP - Not Pumped

* Inside ISGS Pilot Test Area

Table 3. DNAPL ISGS Recovery Data - DNAPL Recovery Wells

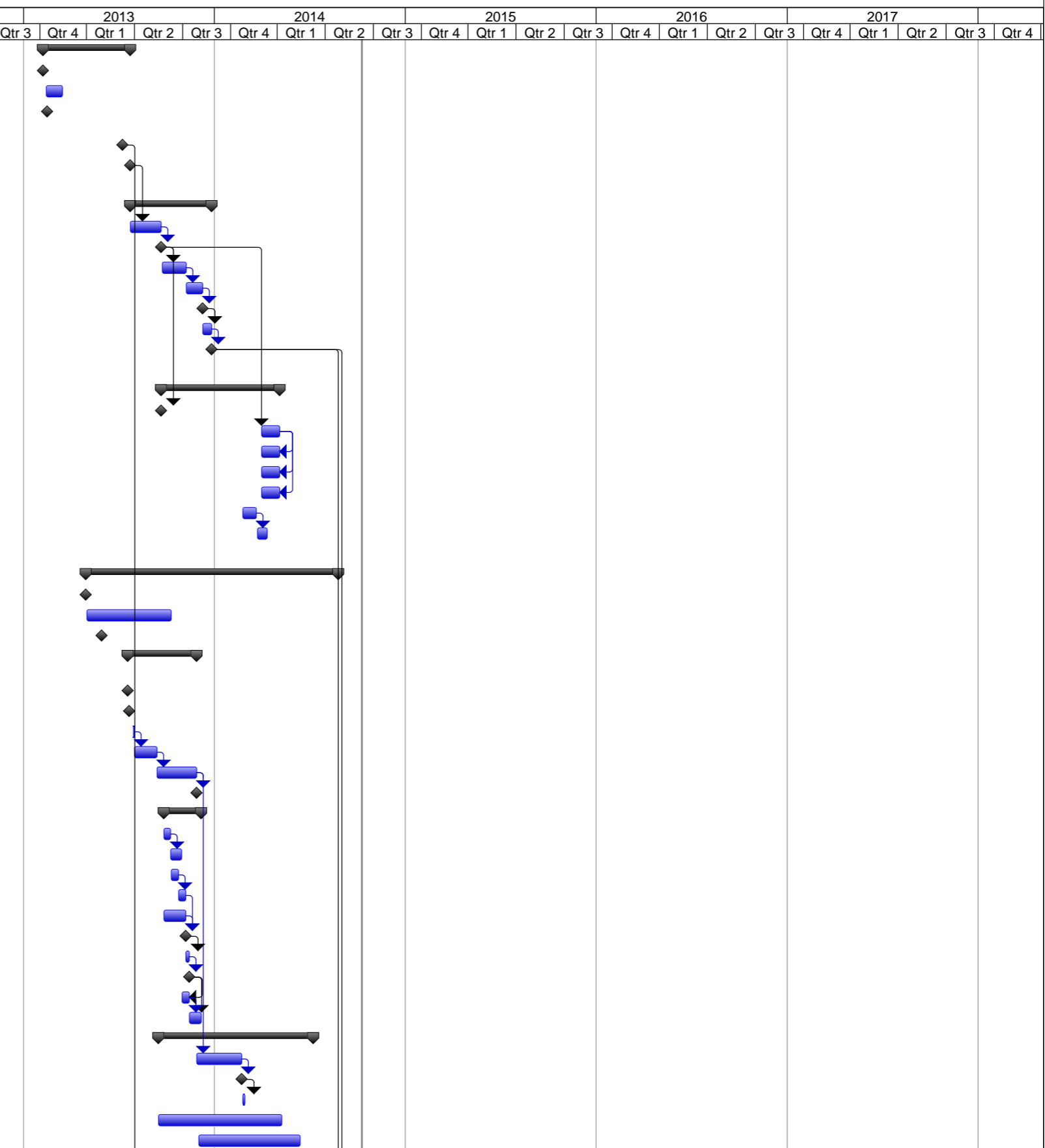
| Well ID | Total Last Month (gal) (2 events) August 2014 | DNAPL Volume (gal) 9/3/2014 | DNAPL Volume (gal) | Total This Month (gal) September 2014 |
|-----------|--|--------------------------------|--------------------|--|
| M-38BE | 0 | Stain | NR | 0 |
| M-39BE | NR | NR | NR | NR |
| M-40BE | NR | NR | NR | NR |
| M-41BE | NR | NR | NR | NR |
| M-42BE | NR | NR | NR | NR |
| HG-36SE * | 5.5 | 1.6 | 1.2 | 2.8 |
| HG-37SE | 5.2 | 2.6 | 2.5 | 5.1 |
| HG-38SE | 9.5 | 4.7 | 4.5 | 9.2 |
| HG-39SE | 5.9 | 2.9 | 3.0 | 5.9 |
| HG-40SE | 5.6 | 2.8 | 2.8 | 5.6 |
| Total | 31.7 | | | 28.6 |

NR - No Recovery

* Inside ISGS Pilot Test Area

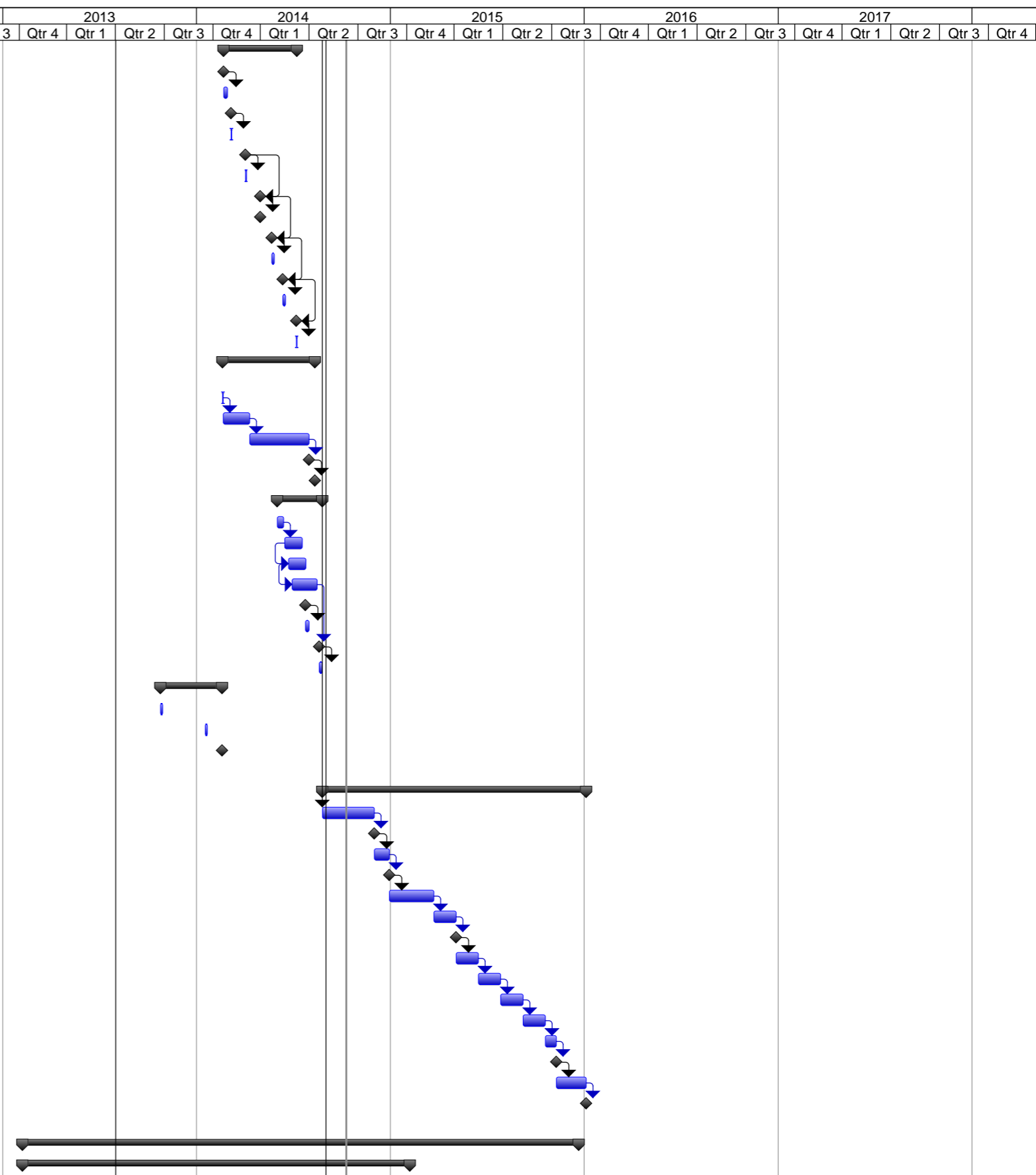
GAINESVILLE REMEDIAL DESIGN

| ID | WBS | Task Name | Duration | Predecessors | Start | Finish | 2013 | | | | 2014 | | | | 2015 | | | | 2016 | | | | 2017 | | | | | | | | | | | |
|----|--------|---|-----------------|--------------|--------------------|---------------------|-------|-------|-------|-------|-------|-------|-------|-------|-------|-------|-------|-------|-------|-------|-------|-------|-------|-------|--|--|--|--|--|--|--|--|--|--|
| | | | | | | | Qtr 3 | Qtr 4 | Qtr 1 | Qtr 2 | Qtr 3 | Qtr 4 | Qtr 1 | Qtr 2 | Qtr 3 | Qtr 4 | Qtr 1 | Qtr 2 | Qtr 3 | Qtr 4 | Qtr 1 | Qtr 2 | Qtr 3 | Qtr 4 | | | | | | | | | | |
| 1 | | 1 Consent Decree for RD/RA | 23.8 wks | | Thu 2/7/13 | Wed 7/24/13 | | | | | | | | | | | | | | | | | | | | | | | | | | | | |
| 2 | 1.1 | US DOJ Lodges Donsent Decree with Court | 0 days | | Thu 2/7/13 | Thu 2/7/13 | | | | | | | | | | | | | | | | | | | | | | | | | | | | |
| 3 | 1.2 | Public Comment on Consent Decree | 4.6 wks | | Wed 2/13/13 | Fri 3/15/13 | | | | | | | | | | | | | | | | | | | | | | | | | | | | |
| 4 | 1.3 | Beazer Submittal: Project Coordinators, Supervising Contractor, Quality Management Plan | 0 days | | Fri 2/15/13 | Fri 2/15/13 | | | | | | | | | | | | | | | | | | | | | | | | | | | | |
| 5 | 1.4 | Court Enters Consent Decree Final | 0 days | | Tue 7/9/13 | Tue 7/9/13 | | | | | | | | | | | | | | | | | | | | | | | | | | | | |
| 6 | 1.5 | EPA Issues Authorization to Proceed with Remedial Design | 0 days | | Wed 7/24/13 | Wed 7/24/13 | | | | | | | | | | | | | | | | | | | | | | | | | | | | |
| 7 | | | | | | | | | | | | | | | | | | | | | | | | | | | | | | | | | | |
| 8 | | 2 Remedial Design Work Plan (RDWP) | 22.3 wks | | Wed 7/24/13 | Thu 12/26/13 | | | | | | | | | | | | | | | | | | | | | | | | | | | | |
| 9 | 2.1 | Prepare RDWP | 43 days | 6 | Wed 7/24/13 | Fri 9/20/13 | | | | | | | | | | | | | | | | | | | | | | | | | | | | |
| 10 | 2.2 | Beazer Submit RDWP | 0 wks | 9 | Fri 9/20/13 | Fri 9/20/13 | | | | | | | | | | | | | | | | | | | | | | | | | | | | |
| 11 | 2.3 | EPA Review and Comment RDWP | 6.8 wks | 10 | Mon 9/23/13 | Thu 11/7/13 | | | | | | | | | | | | | | | | | | | | | | | | | | | | |
| 12 | 2.4 | Beazer Respond to Comments | 4.3 wks | 11 | Fri 11/8/13 | Mon 12/9/13 | | | | | | | | | | | | | | | | | | | | | | | | | | | | |
| 13 | 2.5 | Beazer Submit Responses and RDWP Version 2 | 0 wks | 12 | Mon 12/9/13 | Mon 12/9/13 | | | | | | | | | | | | | | | | | | | | | | | | | | | | |
| 14 | 2.6 | EPA Review | 2.6 wks | 13 | Mon 12/9/13 | Thu 12/26/13 | | | | | | | | | | | | | | | | | | | | | | | | | | | | |
| 15 | 2.7 | EPA Approval RDWP | 0 wks | 14 | Thu 12/26/13 | Thu 12/26/13 | | | | | | | | | | | | | | | | | | | | | | | | | | | | |
| 16 | | | | | | | | | | | | | | | | | | | | | | | | | | | | | | | | | | |
| 17 | | 3 Supporting Plans for RD/RA | 32.2 wks | | Fri 9/20/13 | Mon 5/5/14 | | | | | | | | | | | | | | | | | | | | | | | | | | | | |
| 18 | 3.5 | Beazer Submit Health & Safety Plan | 0 wks | 10 | Fri 9/20/13 | Fri 9/20/13 | | | | | | | | | | | | | | | | | | | | | | | | | | | | |
| 19 | 3.2 | Materials Management Plan | 5 wks | 10 | Tue 4/1/14 | Mon 5/5/14 | | | | | | | | | | | | | | | | | | | | | | | | | | | | |
| 20 | 3.6 | Stormwater Management Plan | 5 wks | 19FF | Tue 4/1/14 | Mon 5/5/14 | | | | | | | | | | | | | | | | | | | | | | | | | | | | |
| 21 | 3.7 | Noise and Dust Control Plan | 5 wks | 19FF | Tue 4/1/14 | Mon 5/5/14 | | | | | | | | | | | | | | | | | | | | | | | | | | | | |
| 22 | 3.5 | Equipment Decontamination Plan | 5 wks | 19FF | Tue 4/1/14 | Mon 5/5/14 | | | | | | | | | | | | | | | | | | | | | | | | | | | | |
| 23 | 3.6 | Quality Assurance Project Plan (update) | 4 wks | | Mon 2/24/14 | Fri 3/21/14 | | | | | | | | | | | | | | | | | | | | | | | | | | | | |
| 24 | 3.7 | Data Management Plan | 3 wks | 23 | Mon 3/24/14 | Fri 4/11/14 | | | | | | | | | | | | | | | | | | | | | | | | | | | | |
| 25 | | | | | | | | | | | | | | | | | | | | | | | | | | | | | | | | | | |
| 26 | | 4 Off-Property Soil Replacement (OU-5): DESIGN TRACK #1 | 69 wks | | Tue 4/30/13 | Mon 8/25/14 | | | | | | | | | | | | | | | | | | | | | | | | | | | | |
| 27 | 4.1 | Initial Identification of Remediation & Evaluation Parcels | 0 wks | | Tue 4/30/13 | Tue 4/30/13 | | | | | | | | | | | | | | | | | | | | | | | | | | | | |
| 28 | 4.2 | Obtain Access Agreements for Surveys & Sampling | 23 wks | | Thu 5/2/13 | Wed 10/9/13 | | | | | | | | | | | | | | | | | | | | | | | | | | | | |
| 29 | 4.3 | Community Information Session | 0 wks | | Thu 5/30/13 | Thu 5/30/13 | | | | | | | | | | | | | | | | | | | | | | | | | | | | |
| 30 | 4.4 | 4.4 Sampling for Refinement of Remediation Parcels (July 2013) | 18.8 wks | | Fri 7/19/13 | Wed 11/27/13 | | | | | | | | | | | | | | | | | | | | | | | | | | | | |
| 31 | 4.4.1 | Proposal for Sampling (July 2013) | 0 wks | | Fri 7/19/13 | Fri 7/19/13 | | | | | | | | | | | | | | | | | | | | | | | | | | | | |
| 32 | 4.4.2 | EPA Approval of Sampling | 0 wks | | Mon 7/22/13 | Mon 7/22/13 | | | | | | | | | | | | | | | | | | | | | | | | | | | | |
| 33 | 4.4.3 | Sample Collection | 2 days | | Tue 7/30/13 | Wed 7/31/13 | | | | | | | | | | | | | | | | | | | | | | | | | | | | |
| 34 | 4.4.4 | Analysis and Validation | 6.2 wks | 33 | Thu 8/1/13 | Thu 9/12/13 | | | | | | | | | | | | | | | | | | | | | | | | | | | | |
| 35 | 4.4.5 | Data Summary Report | 10.8 wks | 34 | Fri 9/13/13 | Wed 11/27/13 | | | | | | | | | | | | | | | | | | | | | | | | | | | | |
| 36 | 4.4.6 | Beazer Submit Data Summary and Fingerprinting Report | 0 wks | 35 | Wed 11/27/13 | Wed 11/27/13 | | | | | | | | | | | | | | | | | | | | | | | | | | | | |
| 37 | 4.5 | 4.5 Pilot Home Soil Replacement | 10.3 wks | | Thu 9/26/13 | Fri 12/6/13 | | | | | | | | | | | | | | | | | | | | | | | | | | | | |
| 38 | 4.5.1 | Survey | 1.8 wks | | Thu 9/26/13 | Tue 10/8/13 | | | | | | | | | | | | | | | | | | | | | | | | | | | | |
| 39 | 4.5.2 | Design & Interview | 3 wks | 38 | Wed 10/9/13 | Tue 10/29/13 | | | | | | | | | | | | | | | | | | | | | | | | | | | | |
| 40 | 4.5.3 | Borrow Sampling | 2 wks | | Thu 10/10/13 | Wed 10/23/13 | | | | | | | | | | | | | | | | | | | | | | | | | | | | |
| 41 | 4.5.4 | Sample Analysis | 2 wks | 40 | Thu 10/24/13 | Wed 11/6/13 | | | | | | | | | | | | | | | | | | | | | | | | | | | | |
| 42 | 4.5.5 | Pilot Plan | 6 wks | | Thu 9/26/13 | Wed 11/6/13 | | | | | | | | | | | | | | | | | | | | | | | | | | | | |
| 43 | 4.5.6 | Submit Pilot Plan | 0 wks | 42,41 | Wed 11/6/13 | Wed 11/6/13 | | | | | | | | | | | | | | | | | | | | | | | | | | | | |
| 44 | 4.5.7 | Review | 1 wk | 43 | Thu 11/7/13 | Wed 11/13/13 | | | | | | | | | | | | | | | | | | | | | | | | | | | | |
| 45 | 4.5.8 | EPA Approval of Pilot Plan | 0 wks | 44 | Wed 11/13/13 | Wed 11/13/13 | | | | | | | | | | | | | | | | | | | | | | | | | | | | |
| 46 | 4.5.9 | Permitting | 2 wks | 45FF | Thu 10/31/13 | Wed 11/13/13 | | | | | | | | | | | | | | | | | | | | | | | | | | | | |
| 47 | 4.5.10 | Pilot Implementation | 3.3 wks | 46,45 | Thu 11/14/13 | Fri 12/6/13 | | | | | | | | | | | | | | | | | | | | | | | | | | | | |
| 48 | 4.6 | 4.6 Blocks A-I Remediation Design | 42.4 wks | | Mon 9/16/13 | Tue 7/8/14 | | | | | | | | | | | | | | | | | | | | | | | | | | | | |
| 49 | 4.6.1 | Remedial Design Details | 12.4 wks | 35 | Thu 11/28/13 | Fri 2/21/14 | | | | | | | | | | | | | | | | | | | | | | | | | | | | |
| 50 | 4.6.2 | Submit RD Details | 0 wks | 49 | Fri 2/21/14 | Fri 2/21/14 | | | | | | | | | | | | | | | | | | | | | | | | | | | | |
| 51 | 4.6.3 | Review and Comment | 0.8 wks | 50 | Mon 2/24/14 | Thu 2/27/14 | | | | | | | | | | | | | | | | | | | | | | | | | | | | |
| 52 | 4.6.4 | Surveying & Interviews | 34 wks | | Mon 9/16/13 | Fri 5/9/14 | | | | | | | | | | | | | | | | | | | | | | | | | | | | |
| 53 | 4.6.5 | Parcel Designs & Remediation Agreements | 28 wks | | Mon 12/2/13 | Fri 6/13/14 | | | | | | | | | | | | | | | | | | | | | | | | | | | | |



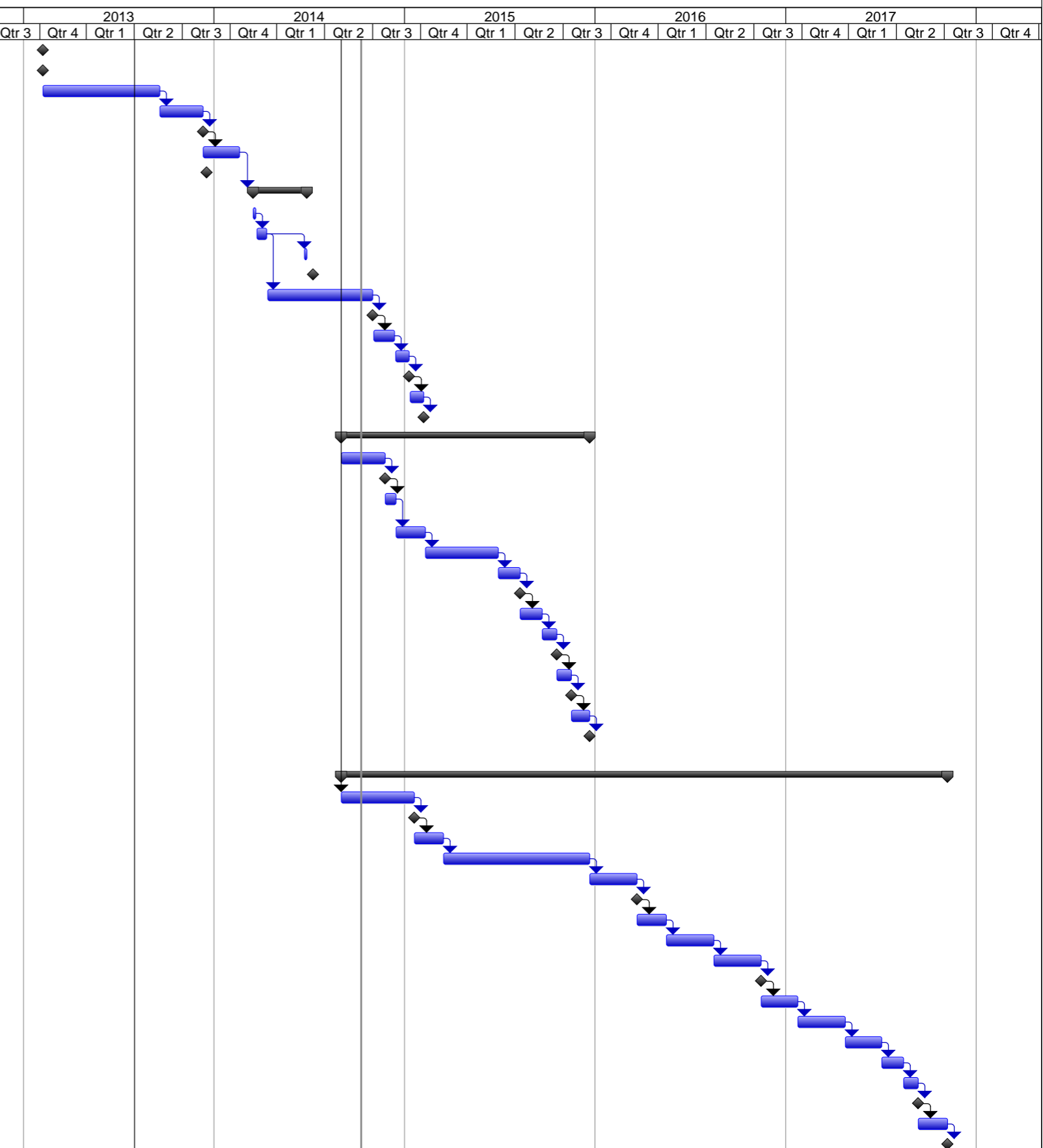
GAINESVILLE REMEDIAL DESIGN

| ID | WBS | Task Name | Duration | Predecessors | Start | Finish | 2013 | | | | 2014 | | | | 2015 | | | | 2016 | | | | 2017 | | | |
|-----|----------|--|------------------|--------------|---------------------|---------------------|-------|-------|-------|-------|-------|-------|-------|-------|-------|-------|-------|-------|-------|-------|-------|-------|-------|-------|--|--|
| | | | | | | | Qtr 3 | Qtr 4 | Qtr 1 | Qtr 2 | Qtr 3 | Qtr 4 | Qtr 1 | Qtr 2 | Qtr 3 | Qtr 4 | Qtr 1 | Qtr 2 | Qtr 3 | Qtr 4 | Qtr 1 | Qtr 2 | Qtr 3 | Qtr 4 | | |
| 54 | 4.6.6 | Final Design and RAWP | 19.6 wks | | Fri 2/21/14 | Tue 7/8/14 | | | | | | | | | | | | | | | | | | | | |
| 55 | 4.6.6.1 | Submit Pre-Final Designs & RAWP: Blocks G & H | 0 wks | | Fri 2/21/14 | Fri 2/21/14 | | | | | | | | | | | | | | | | | | | | |
| 56 | 4.6.6.2 | Final Design and RAWP Approval: Blocks G-H | 1 wk | 55 | Fri 2/21/14 | Thu 2/27/14 | | | | | | | | | | | | | | | | | | | | |
| 57 | 4.6.6.3 | Submit Pre-Final Designs & RAWP: Blocks E&F | 0 wks | | Fri 3/7/14 | Fri 3/7/14 | | | | | | | | | | | | | | | | | | | | |
| 58 | 4.6.6.4 | Final Design and RAWP Approval: Blocks E&F | 1 day | 57 | Fri 3/7/14 | Fri 3/7/14 | | | | | | | | | | | | | | | | | | | | |
| 59 | 4.6.6.5 | Submit Pre-Final Designs & RAWP: Block D | 0 wks | | Thu 4/3/14 | Thu 4/3/14 | | | | | | | | | | | | | | | | | | | | |
| 60 | 4.6.6.6 | Final Design and RAWP Approval: Block D | 2 days | 59 | Thu 4/3/14 | Fri 4/4/14 | | | | | | | | | | | | | | | | | | | | |
| 61 | 4.6.6.7 | Submit Pre-Final Designs & RAWP: Block C | 0 wks | 59FF+4 wks | Wed 4/30/14 | Wed 4/30/14 | | | | | | | | | | | | | | | | | | | | |
| 62 | 4.6.6.8 | Final Design and RAWP Approval: Block C | 0 wks | 61 | Wed 4/30/14 | Wed 4/30/14 | | | | | | | | | | | | | | | | | | | | |
| 63 | 4.6.6.9 | Submit Pre-Final Designs & RAWP: Block B | 0 wks | 61FF+3.1 wks | Thu 5/22/14 | Thu 5/22/14 | | | | | | | | | | | | | | | | | | | | |
| 64 | 4.6.6.10 | Final Design and RAWP Approval: Block B | 0.6 wks | 63 | Thu 5/22/14 | Tue 5/27/14 | | | | | | | | | | | | | | | | | | | | |
| 65 | 4.6.6.11 | Submit Pre-Final Designs & RAWP: Block A | 0 wks | 63FF+3 wks | Thu 6/12/14 | Thu 6/12/14 | | | | | | | | | | | | | | | | | | | | |
| 66 | 4.6.6.12 | Final Design and RAWP Approval: Block A | 0.6 wks | 65 | Thu 6/12/14 | Tue 6/17/14 | | | | | | | | | | | | | | | | | | | | |
| 67 | 4.6.6.13 | Submit Pre-Final Designs & RAWP: Block I | 0 wks | 65FF+3.5 wks | Mon 7/7/14 | Mon 7/7/14 | | | | | | | | | | | | | | | | | | | | |
| 68 | 4.6.6.14 | Final Design and RAWP Approval: Block I | 0.2 wks | 67 | Tue 7/8/14 | Tue 7/8/14 | | | | | | | | | | | | | | | | | | | | |
| 69 | 4.7 | Sampling for Refinement of Remediation Parcels (Feb 2014) | 24.8 wks | | Wed 2/19/14 | Tue 8/12/14 | | | | | | | | | | | | | | | | | | | | |
| 70 | 4.7.1 | Beazer & EPA Sampling | 0.2 wks | | Wed 2/19/14 | Wed 2/19/14 | | | | | | | | | | | | | | | | | | | | |
| 71 | 4.7.2 | Analysis and Validation | 7.2 wks | 70 | Thu 2/20/14 | Thu 4/10/14 | | | | | | | | | | | | | | | | | | | | |
| 72 | 4.7.3 | Data Summary Report Addendum | 16 wks | 71 | Fri 4/11/14 | Thu 7/31/14 | | | | | | | | | | | | | | | | | | | | |
| 73 | 4.7.4 | Beazer Submit Report Addendum | 0 wks | 72 | Thu 7/31/14 | Thu 7/31/14 | | | | | | | | | | | | | | | | | | | | |
| 74 | 4.7.5 | Call to discuss Report Addendum | 0 wks | 73 | Tue 8/12/14 | Tue 8/12/14 | | | | | | | | | | | | | | | | | | | | |
| 75 | 4.8 | Blocks J & K Remediation Design | 12.2 wks | | Mon 6/2/14 | Mon 8/25/14 | | | | | | | | | | | | | | | | | | | | |
| 76 | 4.8.1 | Access Agreements for Design | 2 wks | | Mon 6/2/14 | Fri 6/13/14 | | | | | | | | | | | | | | | | | | | | |
| 77 | 4.8.2 | Surveying & Interviews | 5 wks | 76 | Mon 6/16/14 | Fri 7/18/14 | | | | | | | | | | | | | | | | | | | | |
| 78 | 4.8.3 | Preliminary Design | 5 wks | 77SS+1 wk | Mon 6/23/14 | Fri 7/25/14 | | | | | | | | | | | | | | | | | | | | |
| 79 | 4.8.4 | Pre-Final Design and Access | 7 wks | 78SS+1 wk | Mon 6/30/14 | Fri 8/15/14 | | | | | | | | | | | | | | | | | | | | |
| 80 | 4.8.5 | RAWP: Block J | 0 wks | | Fri 7/25/14 | Fri 7/25/14 | | | | | | | | | | | | | | | | | | | | |
| 81 | 4.8.6 | Final Design & RAWP Approval: Block J | 1 wk | 80 | Fri 7/25/14 | Thu 7/31/14 | | | | | | | | | | | | | | | | | | | | |
| 82 | 4.8.7 | RAWP: Block K | 0 days | 79 | Wed 8/20/14 | Wed 8/20/14 | | | | | | | | | | | | | | | | | | | | |
| 83 | 4.8.8 | Final Design and RAWP Approval: Block K | 4 days | 82 | Wed 8/20/14 | Mon 8/25/14 | | | | | | | | | | | | | | | | | | | | |
| 84 | 4.9 | Community Meetings | 16.4 wks | | Fri 10/25/13 | Tue 2/18/14 | | | | | | | | | | | | | | | | | | | | |
| 85 | 4.9.1 | Community Meeting: Landscaping Workshop - City (Oct 26) | 2 days | | Fri 10/25/13 | Mon 10/28/13 | | | | | | | | | | | | | | | | | | | | |
| 86 | 4.9.2 | Community Meeting (Jan 18 2014) | 2 days | | Fri 1/17/14 | Mon 1/20/14 | | | | | | | | | | | | | | | | | | | | |
| 87 | 4.9.3 | Community Meeting (Feb 18 2014) | 0 wks | | Tue 2/18/14 | Tue 2/18/14 | | | | | | | | | | | | | | | | | | | | |
| 88 | | | | | | | | | | | | | | | | | | | | | | | | | | |
| 89 | 5 | Cutoff Wall and Stormwater Controls: DESIGN TRACK #2 | 71 wks | | Tue 8/26/14 | Mon 1/4/16 | | | | | | | | | | | | | | | | | | | | |
| 90 | 5.1 | Pre-Design Work Plan | 14 wks | 15 | Tue 8/26/14 | Mon 12/1/14 | | | | | | | | | | | | | | | | | | | | |
| 91 | 5.2 | Submit Pre-Design Work Plan | 0 wks | 90 | Mon 12/1/14 | Mon 12/1/14 | | | | | | | | | | | | | | | | | | | | |
| 92 | 5.3 | Review and Approval | 4 wks | 91 | Tue 12/2/14 | Mon 12/29/14 | | | | | | | | | | | | | | | | | | | | |
| 93 | 5.4 | EPA Approval of Pre-Design Work Plan | 0 wks | 92 | Mon 12/29/14 | Mon 12/29/14 | | | | | | | | | | | | | | | | | | | | |
| 94 | 5.5 | Pre-Design Investigation | 12 wks | 93 | Tue 12/30/14 | Mon 3/23/15 | | | | | | | | | | | | | | | | | | | | |
| 95 | 5.6 | Preliminary Design | 6 wks | 94 | Tue 3/24/15 | Mon 5/4/15 | | | | | | | | | | | | | | | | | | | | |
| 96 | 5.7 | Submit Preliminary Design | 0 wks | 95 | Mon 5/4/15 | Mon 5/4/15 | | | | | | | | | | | | | | | | | | | | |
| 97 | 5.8 | Review and Comment | 6 wks | 96 | Tue 5/5/15 | Mon 6/15/15 | | | | | | | | | | | | | | | | | | | | |
| 98 | 5.9 | Pre-Final Design | 6 wks | 97 | Tue 6/16/15 | Mon 7/27/15 | | | | | | | | | | | | | | | | | | | | |
| 99 | 5.10 | Review and Comment | 6 wks | 98 | Tue 7/28/15 | Mon 9/7/15 | | | | | | | | | | | | | | | | | | | | |
| 100 | 5.11 | Final Design | 6 wks | 99 | Tue 9/8/15 | Mon 10/19/15 | | | | | | | | | | | | | | | | | | | | |
| 101 | 5.12 | Review | 3 wks | 100 | Tue 10/20/15 | Mon 11/9/15 | | | | | | | | | | | | | | | | | | | | |
| 102 | 5.13 | EPA Approval of Final Design | 0 wks | 101 | Mon 11/9/15 | Mon 11/9/15 | | | | | | | | | | | | | | | | | | | | |
| 103 | 5.14 | Prepare RAWP | 8 wks | 102 | Tue 11/10/15 | Mon 1/4/16 | | | | | | | | | | | | | | | | | | | | |
| 104 | 5.15 | Submit RAWP | 0 wks | 103 | Mon 1/4/16 | Mon 1/4/16 | | | | | | | | | | | | | | | | | | | | |
| 105 | | | | | | | | | | | | | | | | | | | | | | | | | | |
| 106 | 6 | In-Situ Geochemical Stabilization (ISGS): DESIGN TRACK #3 | 149.6 wks | | Thu 2/7/13 | Mon 12/21/15 | | | | | | | | | | | | | | | | | | | | |
| 107 | 6.1 | Process Area | 104.4 wks | | Thu 2/7/13 | Fri 2/6/15 | | | | | | | | | | | | | | | | | | | | |



GAINESVILLE REMEDIAL DESIGN

| ID | WBS | Task Name | Duration | Predecessors | Start | Finish | 2013 | | | | 2014 | | | | 2015 | | | | 2016 | | | | 2017 | | | |
|-----|---------|---|----------------|--------------|--------------------|---------------------|-------|-------|-------|-------|-------|-------|-------|-------|-------|-------|-------|-------|-------|-------|-------|-------|-------|-------|--|--|
| | | | | | | | Qtr 3 | Qtr 4 | Qtr 1 | Qtr 2 | Qtr 3 | Qtr 4 | Qtr 1 | Qtr 2 | Qtr 3 | Qtr 4 | Qtr 1 | Qtr 2 | Qtr 3 | Qtr 4 | Qtr 1 | Qtr 2 | Qtr 3 | Qtr 4 | | |
| 108 | 6.1.1 | EPA Approval of ISGS Demonstration Work Plan (2012) | 0 wks | | Thu 2/7/13 | Thu 2/7/13 | | | | | | | | | | | | | | | | | | | | |
| 109 | 6.1.2 | Preliminary Design (included in Demonstration Work Plan) | 0 wks | | Thu 2/7/13 | Thu 2/7/13 | | | | | | | | | | | | | | | | | | | | |
| 110 | 6.1.3 | Characterization and DNAPL Recovery (began 2012) | 32 wks | | Thu 2/7/13 | Wed 9/18/13 | | | | | | | | | | | | | | | | | | | | |
| 111 | 6.1.4 | Characterization Report and Pilot Test Plan | 11.8 wks | 110 | Thu 9/19/13 | Tue 12/10/13 | | | | | | | | | | | | | | | | | | | | |
| 112 | 6.1.5 | Submit Characterization Report and Pilot Test Plan | 0 wks | 111 | Tue 12/10/13 | Tue 12/10/13 | | | | | | | | | | | | | | | | | | | | |
| 113 | 6.1.6 | Review and Approval of Pilot Test Plan | 10 wks | 112 | Wed 12/11/13 | Tue 2/18/14 | | | | | | | | | | | | | | | | | | | | |
| 114 | 6.1.7 | Technical Working Group Meeting | 0 wks | | Wed 12/18/13 | Wed 12/18/13 | | | | | | | | | | | | | | | | | | | | |
| 115 | 6.1.8 | Pilot Injection Testing | 15 wks | 113 | Mon 3/17/14 | Fri 6/27/14 | | | | | | | | | | | | | | | | | | | | |
| 116 | 6.1.8.1 | Pre-Pilot Testing & Chemical Delivery | 1 wk | | Mon 3/17/14 | Fri 3/21/14 | | | | | | | | | | | | | | | | | | | | |
| 117 | 6.1.8.2 | Pilot Injections | 3 wks | 116 | Mon 3/24/14 | Fri 4/11/14 | | | | | | | | | | | | | | | | | | | | |
| 118 | 6.1.8.3 | Borings in Injection Area | 1 wk | 117FS+10 wks | Mon 6/23/14 | Fri 6/27/14 | | | | | | | | | | | | | | | | | | | | |
| 119 | 6.1.9 | Technical Working Group Meeting | 0 wks | | Thu 7/10/14 | Thu 7/10/14 | | | | | | | | | | | | | | | | | | | | |
| 120 | 6.1.10 | Pre-Final Design | 29 wks | 117 | Mon 4/14/14 | Fri 10/31/14 | | | | | | | | | | | | | | | | | | | | |
| 121 | 6.1.11 | Submit Pre-Final Design | 0 wks | 120 | Fri 10/31/14 | Fri 10/31/14 | | | | | | | | | | | | | | | | | | | | |
| 122 | 6.1.12 | Review and Comment | 6 wks | 121 | Mon 11/3/14 | Fri 12/12/14 | | | | | | | | | | | | | | | | | | | | |
| 123 | 6.1.13 | Final Design and RAWP | 4 wks | 122 | Mon 12/15/14 | Fri 1/9/15 | | | | | | | | | | | | | | | | | | | | |
| 124 | 6.1.14 | Submit Final Design and RAWP | 0 wks | 123 | Fri 1/9/15 | Fri 1/9/15 | | | | | | | | | | | | | | | | | | | | |
| 125 | 6.1.15 | Review | 4 wks | 124 | Mon 1/12/15 | Fri 2/6/15 | | | | | | | | | | | | | | | | | | | | |
| 126 | 6.1.16 | EPA Approval of Final Design and RAWP | 0 wks | 125 | Fri 2/6/15 | Fri 2/6/15 | | | | | | | | | | | | | | | | | | | | |
| 127 | 6.2 | South Lagoon | 68 wks | | Tue 9/2/14 | Mon 12/21/15 | | | | | | | | | | | | | | | | | | | | |
| 128 | 6.2.1 | Preliminary Design & Design Investigation Work Plan | 12 wks | | Tue 9/2/14 | Mon 11/24/14 | | | | | | | | | | | | | | | | | | | | |
| 129 | 6.2.2 | Submit Preliminary Design & Design Investigation Work Plan | 0 wks | 128 | Mon 11/24/14 | Mon 11/24/14 | | | | | | | | | | | | | | | | | | | | |
| 130 | 6.2.3 | Review and Approval Preliminary Design & Design Investigation Work Plan | 3 wks | 129 | Tue 11/25/14 | Mon 12/15/14 | | | | | | | | | | | | | | | | | | | | |
| 131 | 6.2.4 | Installation of Borings and DNAPL Recovery Wells | 8 wks | 130 | Tue 12/16/14 | Mon 2/9/15 | | | | | | | | | | | | | | | | | | | | |
| 132 | 6.2.5 | Collection of Baseline Data | 20 wks | 131 | Tue 2/10/15 | Mon 6/29/15 | | | | | | | | | | | | | | | | | | | | |
| 133 | 6.2.6 | Pre-Final Design | 6 wks | 132 | Tue 6/30/15 | Mon 8/10/15 | | | | | | | | | | | | | | | | | | | | |
| 134 | 6.2.7 | Submit Pre-Final Design | 0 wks | 133 | Mon 8/10/15 | Mon 8/10/15 | | | | | | | | | | | | | | | | | | | | |
| 135 | 6.2.8 | Review and Comment | 6 wks | 134 | Tue 8/11/15 | Mon 9/21/15 | | | | | | | | | | | | | | | | | | | | |
| 136 | 6.2.9 | Final Design | 4 wks | 135 | Tue 9/22/15 | Mon 10/19/15 | | | | | | | | | | | | | | | | | | | | |
| 137 | 6.2.10 | Submit Final Design | 0 wks | 136 | Mon 10/19/15 | Mon 10/19/15 | | | | | | | | | | | | | | | | | | | | |
| 138 | 6.2.11 | Review | 4 wks | 137 | Tue 10/20/15 | Mon 11/16/15 | | | | | | | | | | | | | | | | | | | | |
| 139 | 6.2.12 | EPA Approval of Final Design | 0 wks | 138 | Mon 11/16/15 | Mon 11/16/15 | | | | | | | | | | | | | | | | | | | | |
| 140 | 6.2.13 | Prepare RAWP | 5 wks | 139 | Tue 11/17/15 | Mon 12/21/15 | | | | | | | | | | | | | | | | | | | | |
| 141 | 6.2.14 | Submit RAWP | 0 wks | 140 | Mon 12/21/15 | Mon 12/21/15 | | | | | | | | | | | | | | | | | | | | |
| 142 | | | | | | | | | | | | | | | | | | | | | | | | | | |
| 143 | 7 | In-Situ Solidification/Stabilization (ISS/S): DESIGN TRACK #4 | 166 wks | | Tue 9/2/14 | Mon 11/6/17 | | | | | | | | | | | | | | | | | | | | |
| 144 | 7.1 | Pre-Design Investigation & Treatability Test Workplan | 20 wks | 15 | Tue 9/2/14 | Mon 1/19/15 | | | | | | | | | | | | | | | | | | | | |
| 145 | 7.2 | Beazer Submit Pre-Design Investigation & Treatability Test WP | 0 wks | 144 | Mon 1/19/15 | Mon 1/19/15 | | | | | | | | | | | | | | | | | | | | |
| 146 | 7.3 | Review and Approval | 8 wks | 145 | Tue 1/20/15 | Mon 3/16/15 | | | | | | | | | | | | | | | | | | | | |
| 147 | 7.4 | Conduct Pre-Design Investigation & Treatability Test | 40 wks | 146 | Tue 3/17/15 | Mon 12/21/15 | | | | | | | | | | | | | | | | | | | | |
| 148 | 7.5 | Pilot Test Workplan | 13 wks | 147 | Tue 12/22/15 | Mon 3/21/16 | | | | | | | | | | | | | | | | | | | | |
| 149 | 7.6 | Beazer Submit Pilot Test Workplan | 0 wks | 148 | Mon 3/21/16 | Mon 3/21/16 | | | | | | | | | | | | | | | | | | | | |
| 150 | 7.7 | Review and Approval | 8 wks | 149 | Tue 3/22/16 | Mon 5/16/16 | | | | | | | | | | | | | | | | | | | | |
| 151 | 7.8 | Conduct Pilot Test | 13 wks | 150 | Tue 5/17/16 | Mon 8/15/16 | | | | | | | | | | | | | | | | | | | | |
| 152 | 7.9 | Preliminary Design | 13 wks | 151 | Tue 8/16/16 | Mon 11/14/16 | | | | | | | | | | | | | | | | | | | | |
| 153 | 7.10 | Submit Preliminary Design | 0 wks | 152 | Mon 11/14/16 | Mon 11/14/16 | | | | | | | | | | | | | | | | | | | | |
| 154 | 7.11 | Review and Comment | 10 wks | 153 | Tue 11/15/16 | Mon 1/23/17 | | | | | | | | | | | | | | | | | | | | |
| 155 | 7.12 | Pre-Final Design | 13 wks | 154 | Tue 1/24/17 | Mon 4/24/17 | | | | | | | | | | | | | | | | | | | | |
| 156 | 7.13 | Review and Comment | 10 wks | 155 | Tue 4/25/17 | Mon 7/3/17 | | | | | | | | | | | | | | | | | | | | |
| 157 | 7.14 | Final Design | 6 wks | 156 | Tue 7/4/17 | Mon 8/14/17 | | | | | | | | | | | | | | | | | | | | |
| 158 | 7.15 | Review and Approval | 4 wks | 157 | Tue 8/15/17 | Mon 9/11/17 | | | | | | | | | | | | | | | | | | | | |
| 159 | 7.16 | EPA Approval of Final Design | 0 wks | 158 | Mon 9/11/17 | Mon 9/11/17 | | | | | | | | | | | | | | | | | | | | |
| 160 | 7.17 | Prepare RAWP | 8 wks | 159 | Tue 9/12/17 | Mon 11/6/17 | | | | | | | | | | | | | | | | | | | | |
| 161 | 7.18 | Submit RAWP | 0 wks | 160 | Mon 11/6/17 | Mon 11/6/17 | | | | | | | | | | | | | | | | | | | | |



GAINESVILLE REMEDIAL DESIGN

| ID | WBS | Task Name | Duration | Predecessors | Start | Finish | 2013 | | | | 2014 | | | | 2015 | | | | 2016 | | | | 2017 | | | |
|-----|--------|---|------------------|--------------|---------------------|--------------------|-------|-------|-------|-------|-------|-------|-------|-------|-------|-------|-------|-------|-------|-------|-------|-------|-------|-------|--|--|
| | | | | | | | Qtr 3 | Qtr 4 | Qtr 1 | Qtr 2 | Qtr 3 | Qtr 4 | Qtr 1 | Qtr 2 | Qtr 3 | Qtr 4 | Qtr 1 | Qtr 2 | Qtr 3 | Qtr 4 | Qtr 1 | Qtr 2 | Qtr 3 | Qtr 4 | | |
| 162 | | | | | | | | | | | | | | | | | | | | | | | | | | |
| 163 | | 8 Other Engineered Components: DESIGN TRACK #5 | 87 wks | | Mon 6/1/15 | Fri 1/27/17 | | | | | | | | | | | | | | | | | | | | |
| 164 | 8.1 | Pre-Design Work Plan | 6 wks | | Mon 6/1/15 | Fri 7/10/15 | | | | | | | | | | | | | | | | | | | | |
| 165 | 8.2 | Submit Pre-Design Work Plan | 0 wks | 164 | Fri 7/10/15 | Fri 7/10/15 | | | | | | | | | | | | | | | | | | | | |
| 166 | 8.3 | Review and Approval | 6 wks | 165 | Mon 7/13/15 | Fri 8/21/15 | | | | | | | | | | | | | | | | | | | | |
| 167 | 8.4 | EPA Approval of Pre-Design Work Plan | 0 wks | 166 | Fri 8/21/15 | Fri 8/21/15 | | | | | | | | | | | | | | | | | | | | |
| 168 | 8.5 | Pre-Design Investigation | 26 wks | 167 | Mon 8/24/15 | Fri 2/19/16 | | | | | | | | | | | | | | | | | | | | |
| 169 | 8.6 | Preliminary Design | 6 wks | 168 | Mon 2/22/16 | Fri 4/1/16 | | | | | | | | | | | | | | | | | | | | |
| 170 | 8.7 | Submit Preliminary Design | 0 wks | 169 | Fri 4/1/16 | Fri 4/1/16 | | | | | | | | | | | | | | | | | | | | |
| 171 | 8.8 | Review and Comment | 6 wks | 170 | Mon 4/4/16 | Fri 5/13/16 | | | | | | | | | | | | | | | | | | | | |
| 172 | 8.9 | Pre-Final Design | 13 wks | 171 | Mon 5/16/16 | Fri 8/12/16 | | | | | | | | | | | | | | | | | | | | |
| 173 | 8.10 | Review and Comment | 6 wks | 172 | Mon 8/15/16 | Fri 9/23/16 | | | | | | | | | | | | | | | | | | | | |
| 174 | 8.11 | Final Design | 6 wks | 173 | Mon 9/26/16 | Fri 11/4/16 | | | | | | | | | | | | | | | | | | | | |
| 175 | 8.12 | Review | 4 wks | 174 | Mon 11/7/16 | Fri 12/2/16 | | | | | | | | | | | | | | | | | | | | |
| 176 | 8.13 | EPA Approval of Final Design | 0 wks | 175 | Fri 12/2/16 | Fri 12/2/16 | | | | | | | | | | | | | | | | | | | | |
| 177 | 8.14 | Prepare RAWP | 8 wks | 176 | Mon 12/5/16 | Fri 1/27/17 | | | | | | | | | | | | | | | | | | | | |
| 178 | 8.15 | Submit RAWP | 0 wks | 177 | Fri 1/27/17 | Fri 1/27/17 | | | | | | | | | | | | | | | | | | | | |
| 179 | | | | | | | | | | | | | | | | | | | | | | | | | | |
| 180 | | 9 Institutional Control | 121.3 wks | | Tue 7/9/13 | Wed 11/4/15 | | | | | | | | | | | | | | | | | | | | |
| 181 | 9.1 | Prepare Institutional Control Implementation and Assurance Plan (ICIAP) | 6.8 wks | 5 | Tue 7/9/13 | Fri 8/23/13 | | | | | | | | | | | | | | | | | | | | |
| 182 | 9.2 | Submit ICIAP | 0 wks | 181 | Fri 8/23/13 | Fri 8/23/13 | | | | | | | | | | | | | | | | | | | | |
| 183 | 9.3 | Review | 12.5 wks | 182 | Mon 8/26/13 | Wed 11/20/13 | | | | | | | | | | | | | | | | | | | | |
| 184 | 9.4 | Beazer Respond to Comments | 52 wks | 183 | Wed 11/20/13 | Wed 11/19/14 | | | | | | | | | | | | | | | | | | | | |
| 185 | 9.5 | Beazer Submit Responses & ICIAP Version 2 | 0 wks | 184 | Wed 11/19/14 | Wed 11/19/14 | | | | | | | | | | | | | | | | | | | | |
| 186 | 9.6 | Review | 3 wks | 185 | Wed 11/19/14 | Wed 12/10/14 | | | | | | | | | | | | | | | | | | | | |
| 187 | 9.7 | EPA and FDEP Approval of ICIAP | 0 wks | 186 | Wed 12/10/14 | Wed 12/10/14 | | | | | | | | | | | | | | | | | | | | |
| 188 | 9.8 | Implement Beazer-Property Restrictive Covenant | 47 wks | | Wed 12/10/14 | Wed 11/4/15 | | | | | | | | | | | | | | | | | | | | |
| 189 | 9.8.1 | Draft Proprietary Controls Package | 13 wks | 187 | Wed 12/10/14 | Wed 3/11/15 | | | | | | | | | | | | | | | | | | | | |
| 190 | 9.8.2 | Submit Draft Proprietary Controls Package | 0 wks | 189 | Wed 3/11/15 | Wed 3/11/15 | | | | | | | | | | | | | | | | | | | | |
| 191 | 9.8.3 | Review and Updating | 8 wks | 190 | Wed 3/11/15 | Wed 5/6/15 | | | | | | | | | | | | | | | | | | | | |
| 192 | 9.8.4 | Update Title Search and Prepare Public Notice | 8 wks | 191 | Wed 5/6/15 | Wed 7/1/15 | | | | | | | | | | | | | | | | | | | | |
| 193 | 9.8.5 | Beazer Publish Public Notice | 0 wks | 192 | Wed 7/1/15 | Wed 7/1/15 | | | | | | | | | | | | | | | | | | | | |
| 194 | 9.8.6 | Public Comment Period | 4.4 wks | 193 | Wed 7/1/15 | Fri 7/31/15 | | | | | | | | | | | | | | | | | | | | |
| 195 | 9.8.7 | Address Comments and Execute Restrictive Covenant | 5 wks | 194 | Fri 7/31/15 | Fri 9/4/15 | | | | | | | | | | | | | | | | | | | | |
| 196 | 9.8.8 | Record Restrictive Covenant at Alacha County Clerk of Court | 0 wks | 195 | Fri 9/4/15 | Fri 9/4/15 | | | | | | | | | | | | | | | | | | | | |
| 197 | 9.8.9 | Prepare Final Proprietary Controls Package | 8.6 wks | 196 | Fri 9/4/15 | Wed 11/4/15 | | | | | | | | | | | | | | | | | | | | |
| 198 | 9.8.10 | Submit Final Proprietary Controls Package | 0 wks | 197 | Wed 11/4/15 | Wed 11/4/15 | | | | | | | | | | | | | | | | | | | | |

Red text used for current tasks

Task Milestone Summary