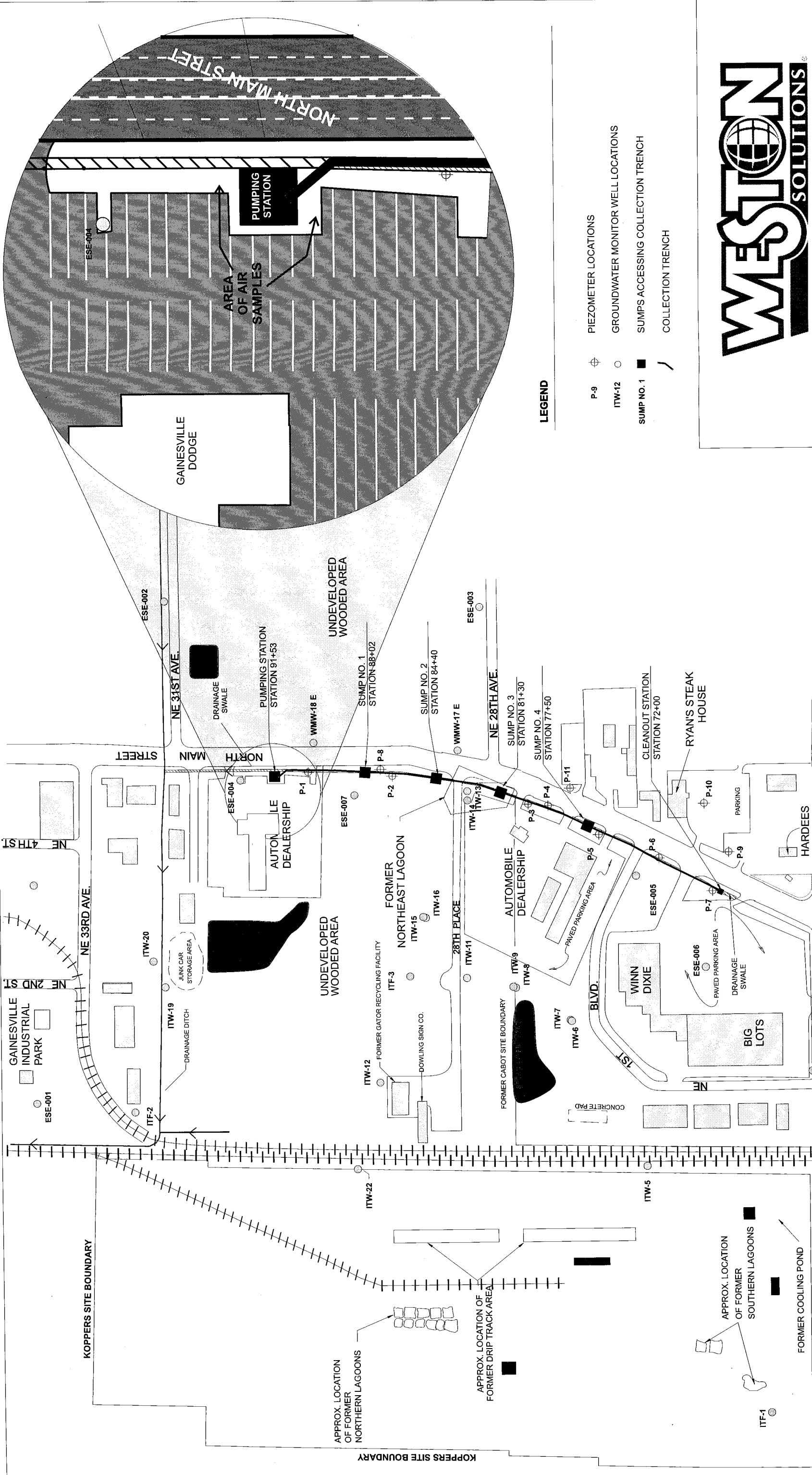


APPENDIX A

FIGURES



LEGEND

- P-9 PIEZOMETER LOCATIONS
- ITW-12 GROUNDWATER MONITOR WELL LOCATIONS
- SUMP NO. 1 SUMPS ACCESSING COLLECTION TRENCH
- COLLECTION TRENCH



PROJECT TITLE: CABOT CARBON/KOPPERS SITE
GAINESVILLE, FLORIDA

SITE MAP

FIGURE 1

DRAWN:	E. CRISP	DATE:	24MAY05	DES. ENG.:		DATE:		W.O. NO.:	05791-004-004
CHECKED:		DATE:		APPROVED:		DATE:		FILE NAME:	AIRSITEMAP2.CDR



NE 23RD AVE.

APPROX. LOCATION OF FORMER AUTOMASTERS UST

ITW-1 ITW-2

APPROX. LOCATION OF FORMER SOUTHERN LAGOONS

FORMER COOLING POND

APPROX. LOCATION OF FORMER DRIIP TRACK AREA

APPROX. LOCATION OF FORMER NORTHERN LAGOONS

KOPPERS SITE BOUNDARY

KOPPERS SITE BOUNDARY

NE 33RD AVE.

STREET MAIN NORTH

NE 31ST AVE.

NE 28TH AVE.

UNDEVELOPED WOODED AREA

FORMER NORTHEAST LAGOON

AUTOMOBILE DEALERSHIP

AUTOMOBILE DEALERSHIP

WINN DIXIE

RYAN'S STEAK HOUSE

HARDEES

BIG LOTS

GAINESVILLE DODGE

AREA OF AIR SAMPLES

PUMPING STATION

NORTH MAIN STREET

NE 2ND ST

NE 33RD AVE.

GAINESVILLE INDUSTRIAL PARK

ESE-001

ITW-2

ITW-19

ITW-20

ESE-004

P-1

ESE-007

P-2

ITW-12

ITF-3

ITW-15

ITW-16

ITW-11

ITW-14

ITW-13

ITW-17

ITW-9

ITW-8

ITW-7

ITW-5

ITW-6

ITW-4

ITW-10

ITW-3

ITW-11

ITW-12

ITW-13

ITW-14

ITW-15

ITW-16

ITW-17

ITW-18

ITW-19

ITW-20

ITW-21

ITW-22

ITW-23

ITW-24

ITW-25

ITW-26

ITW-27

ITW-28

ITW-29

ITW-30

ITW-31

ITW-32

ITW-33

ITW-34

ITW-35

ITW-36

ITW-37

ITW-38

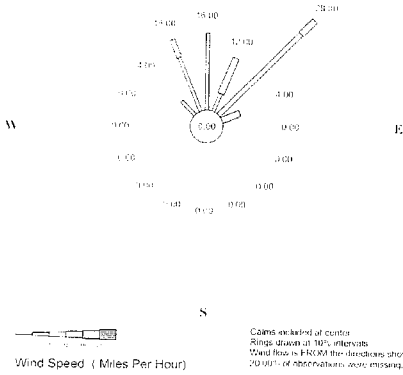
ITW-39

ITW-40

ITW-41

ITW-42

Gainesville, Florida
 January 18, 2005
 Wind Rose
 7 am to 6 pm EST
 N



NE-011805



AUTOMOBILE
 DEALERSHIP
 PARKING AREA

LIFT
 STATION

SW-011805



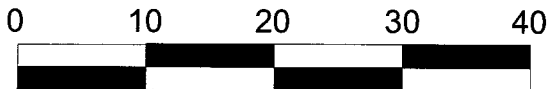
DRAINAGE SWALE



UPWIND SAMPLE LOCATION



DOWNWIND SAMPLE LOCATION



SCALE: 1" = 15'



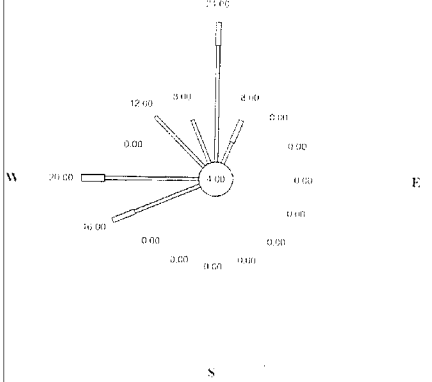
CABOT CARBON/KOPPERS SITE
 GAINESVILLE, FLORIDA

SITE MAP

FIGURE 2

DRAWN: E. CRISP	DATE: 06APR05	W.O. NO.: 05791-004-004
CHECKED:	DATE:	FILE NAME: AIRSAMPLE18TH.CDR

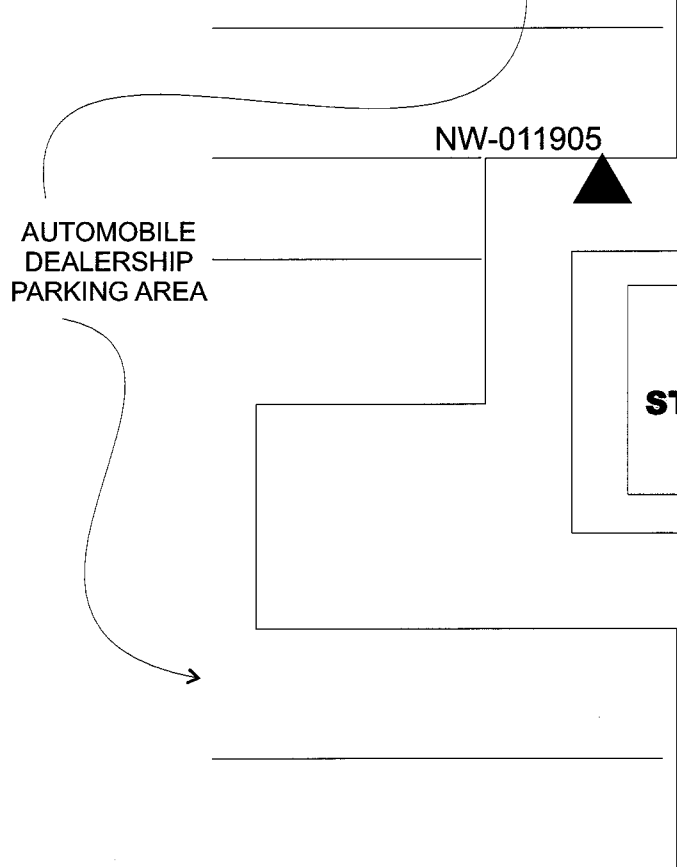
Gainesville, Florida
 January 19, 2005
 Wind Rose
 7 am to 6 pm EST



Wind Speed (Miles Per Hour)

0 1 2 3 4

Calms included at center
 Rings drawn at 5% intervals
 Wind flow is FROM the directions shown
 8.00% of observations were missing



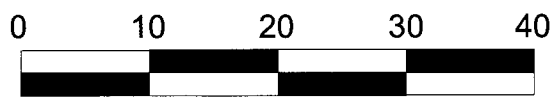
DRAINAGE SWALE



UPWIND SAMPLE LOCATION



DOWNWIND SAMPLE LOCATION



SCALE: 1" = 15'



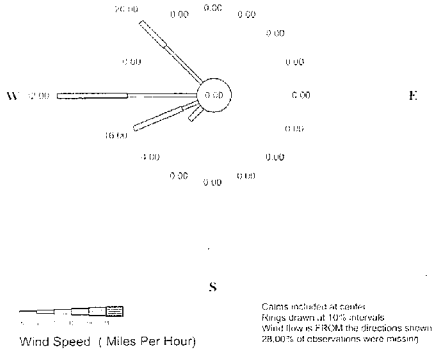
CABOT CARBON/KOPPERS SITE
 GAINESVILLE, FLORIDA

SITE MAP

FIGURE 3

DRAWN: E. CRISP	DATE: 07APR05	W.O. NO.: 05791-004-004
CHECKED:	DATE:	FILE NAME: AIRSAMPLE19TH.CDR

Gainesville, Florida
 January 20, 2005
 Wind Rose
 7 am to 6 pm EST



AUTOMOBILE
 DEALERSHIP
 PARKING AREA

W-012005

**LIFT
 STATION**

E-012005

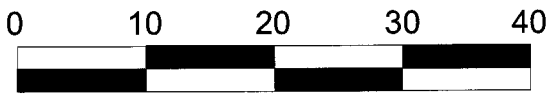
DRAINAGE SWALE



UPWIND SAMPLE LOCATION



DOWNWIND SAMPLE LOCATION



SCALE: 1" = 15'



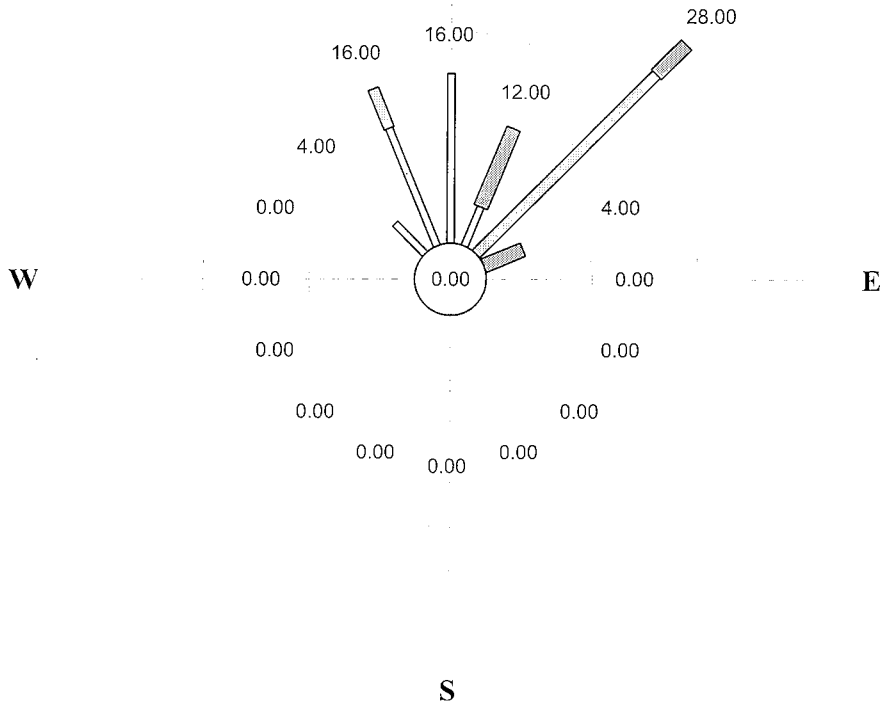
CABOT CARBON/KOPPERS SITE
 GAINESVILLE, FLORIDA

SITE MAP

FIGURE 4

DRAWN: E. CRISP	DATE: 07APR05	W.O. NO.: 05791-004-004
CHECKED:	DATE:	FILE NAME: AIRSAMPLE20TH.CDR

Gainesville, Florida
 January 18, 2005
 Wind Rose
 7 am to 6 pm EST
 N



PERCENT OCCURRENCE: Wind Speed (Miles Per Hour)
 LOWER BOUND OF CATEGORY

DIR	0.5	3	7	12	18	24
N	0.00	16.00	0.00	0.00	0.00	0.00
NNE	0.00	4.00	0.00	8.00	0.00	0.00
NE	0.00	0.00	24.00	4.00	0.00	0.00
ENE	0.00	0.00	0.00	4.00	0.00	0.00
E	0.00	0.00	0.00	0.00	0.00	0.00
ESE	0.00	0.00	0.00	0.00	0.00	0.00
SE	0.00	0.00	0.00	0.00	0.00	0.00
SSE	0.00	0.00	0.00	0.00	0.00	0.00

TOTAL OBS = 25 MISSING OBS = 5

PERCENT OCCURRENCE: Wind Speed (Miles Per Hour)
 LOWER BOUND OF CATEGORY

DIR	0.5	3	7	12	18	24
S	0.00	0.00	0.00	0.00	0.00	0.00
SSW	0.00	0.00	0.00	0.00	0.00	0.00
SW	0.00	0.00	0.00	0.00	0.00	0.00
WSW	0.00	0.00	0.00	0.00	0.00	0.00
W	0.00	0.00	0.00	0.00	0.00	0.00
WNW	0.00	0.00	0.00	0.00	0.00	0.00
NW	0.00	4.00	0.00	0.00	0.00	0.00
NNW	0.00	12.00	4.00	0.00	0.00	0.00

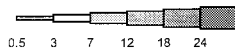
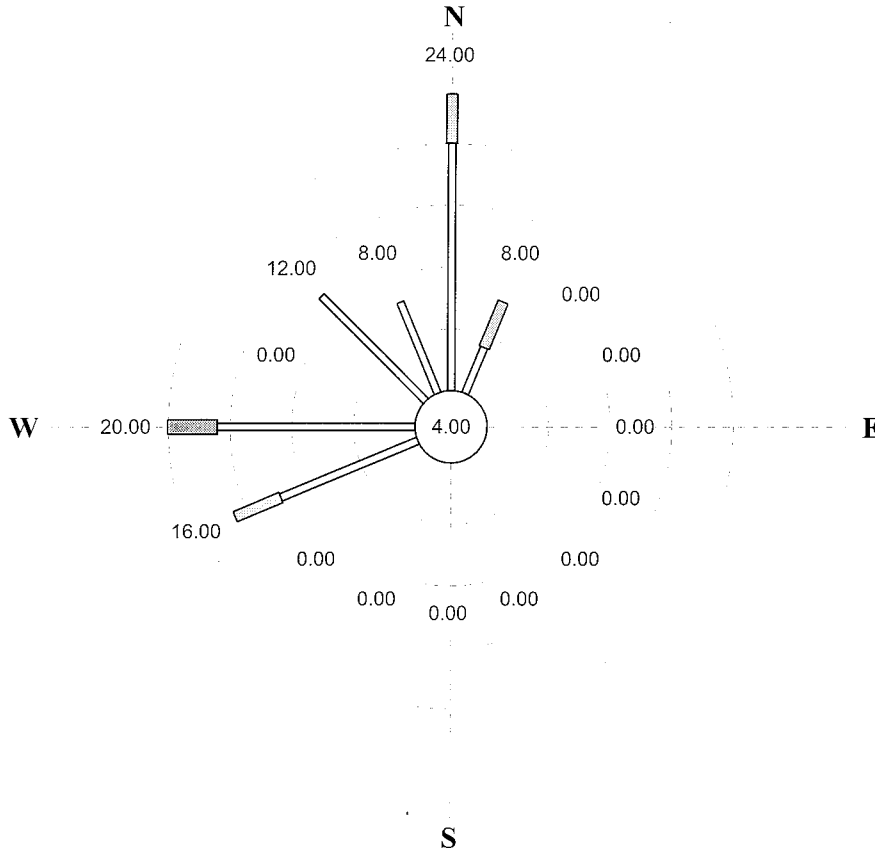
CALM OBS = 0 PERCENT CALM = 0.00

Gainesville, Florida

January 19, 2005

Wind Rose

7 am to 6 pm EST



Wind Speed (Miles Per Hour)

Calms included at center.
Rings drawn at 5% intervals.
Wind flow is FROM the directions shown.
8.00% of observations were missing.

PERCENT OCCURRENCE: Wind Speed (Miles Per Hour)
LOWER BOUND OF CATEGORY

DIR	0.5	3	7	12	18	24
N	0.00	20.00	4.00	0.00	0.00	0.00
NNE	0.00	4.00	4.00	0.00	0.00	0.00
NE	0.00	0.00	0.00	0.00	0.00	0.00
ENE	0.00	0.00	0.00	0.00	0.00	0.00
E	0.00	0.00	0.00	0.00	0.00	0.00
ESE	0.00	0.00	0.00	0.00	0.00	0.00
SE	0.00	0.00	0.00	0.00	0.00	0.00
SSE	0.00	0.00	0.00	0.00	0.00	0.00

TOTAL OBS = 25 MISSING OBS = 2

PERCENT OCCURRENCE: Wind Speed (Miles Per Hour)
LOWER BOUND OF CATEGORY

DIR	0.5	3	7	12	18	24
S	0.00	0.00	0.00	0.00	0.00	0.00
SSW	0.00	0.00	0.00	0.00	0.00	0.00
SW	0.00	0.00	0.00	0.00	0.00	0.00
WSW	0.00	12.00	4.00	0.00	0.00	0.00
W	0.00	16.00	0.00	4.00	0.00	0.00
WNW	0.00	0.00	0.00	0.00	0.00	0.00
NW	0.00	12.00	0.00	0.00	0.00	0.00
NNW	0.00	8.00	0.00	0.00	0.00	0.00

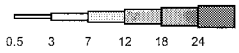
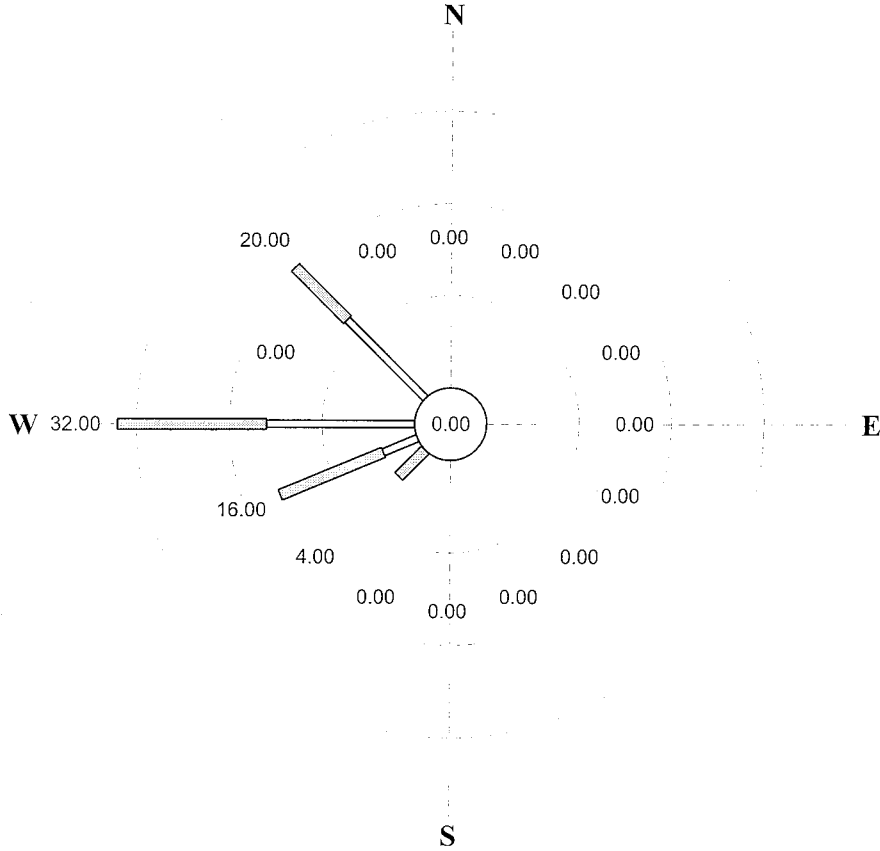
CALM OBS = 1 PERCENT CALM = 4.00

Gainesville, Florida

January 20, 2005

Wind Rose

7 am to 6 pm EST



Wind Speed (Miles Per Hour)

Calms included at center.
Rings drawn at 10% intervals.
Wind flow is FROM the directions shown.
28.00% of observations were missing.

PERCENT OCCURRENCE: Wind Speed (Miles Per Hour)
LOWER BOUND OF CATEGORY

DIR	0.5	3	7	12	18	24
N	0.00	0.00	0.00	0.00	0.00	0.00
NNE	0.00	0.00	0.00	0.00	0.00	0.00
NE	0.00	0.00	0.00	0.00	0.00	0.00
ENE	0.00	0.00	0.00	0.00	0.00	0.00
E	0.00	0.00	0.00	0.00	0.00	0.00
ESE	0.00	0.00	0.00	0.00	0.00	0.00
SE	0.00	0.00	0.00	0.00	0.00	0.00
SSE	0.00	0.00	0.00	0.00	0.00	0.00

TOTAL OBS = 25 MISSING OBS = 7

PERCENT OCCURRENCE: Wind Speed (Miles Per Hour)
LOWER BOUND OF CATEGORY

DIR	0.5	3	7	12	18	24
S	0.00	0.00	0.00	0.00	0.00	0.00
SSW	0.00	0.00	0.00	0.00	0.00	0.00
SW	0.00	0.00	4.00	0.00	0.00	0.00
WSW	0.00	4.00	12.00	0.00	0.00	0.00
W	0.00	16.00	16.00	0.00	0.00	0.00
WNW	0.00	0.00	0.00	0.00	0.00	0.00
NW	0.00	12.00	8.00	0.00	0.00	0.00
NNW	0.00	0.00	0.00	0.00	0.00	0.00

CALM OBS = 0 PERCENT CALM = 0.00