

## Cabot/Koppers Superfund Site Update

by  
**Rick Hutton, P.E.**  
**Water/Wastewater Supervising Engineer**  
**Gainesville Regional Utilities**

GCC/BOCC Mtg  
May 1, 2008



## Koppers Site

- **2001**
  - Geology & contamination not well understood
  - Proposed remedy not adequate
  
- **2008**
  - Much better understanding of site
  - EPA now progressing toward plan for final remedy

GCC/BOCC Mtg  
May 1, 2008 Slide: 2

## GRU Involvement

- **GRU Primary Goal**
  - Prevent contamination from reaching wellfield
  
- **GRU Consultant Team**
  - World Renowned Experts in DNAPL/creosote
  - Complimentary skills & strengths
  - Reliance on more than one opinion
  - Unbiased, comprehensive site review
  - Assist GRU in working w/ EPA, FDEP, Alachua County & Beazer

GCC/BOCC Mtg  
May 1, 2008 Slide: 3

## Expert Consultant Team

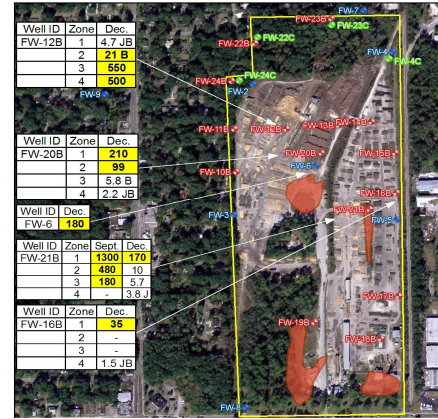
- **Floridan Aquifer Transect Wells (Installed 2005-06)**
- **Groundwater Modeling Evaluation (2005)**
- **Review & Recommendation Report (2006)**
  - Detailed recommendations for additional investigations
  - Most findings adopted into EPA 5 Year Review Report
  - EPA coordination w/ Beazer & Cabot on implementing

GCC/BOCC Mtg  
May 1, 2008 Slide: 4

## 2001 Floridan Aquifer Wells



## 2008 Floridan Aquifer Wells



## GRU's Primary Concerns

- ☐ **Surficial & Intermediate Aquifer Remediation**
- ☐ **Containment/Remediation of Floridan Contaminated areas**
- ☐ **Long-Term Floridan Monitoring**
- ☐ **Contingency Plans**
- ☐ **Cabot Site Investigation**

GCC/BOCC Mtg  
May 1, 2008 Slide: 7