

**RESULTS OF QUARTERLY GROUNDWATER SAMPLING  
CONDUCTED JUNE 17-20, 2008, FOR  
SECOND QUARTER, 2008**

**EASTERN PORTION OF THE  
CABOT CARBON/KOPPERS SUPERFUND SITE  
GAINESVILLE, FLORIDA**

*Prepared for:*

**Cabot Corporation  
Two Seaport Lane, Suite 1300  
Boston, Massachusetts 02210**

*Prepared by:*

***Weston Solutions, Inc.  
Suite 100  
5430 Metric Place  
Norcross, Georgia 30092  
(770) 325-7900***

**August 2008**

**WESTON WORK ORDER NO. 05791.008.001.0001**

## TABLE OF CONTENTS

<b><u>Section</u></b>	<b><u>Title</u></b>	<b><u>Page</u></b>
<b>1</b>	<b>BACKGROUND .....</b>	<b>1-1</b>
<b>2</b>	<b>METHODOLOGY .....</b>	<b>2-1</b>
<b>3</b>	<b>WATER LEVEL MEASUREMENTS.....</b>	<b>3-1</b>
	3.1 Surficial Aquifer.....	3-2
	3.2 Intermediate Aquifer .....	3-2
<b>4</b>	<b>ANALYTICAL RESULTS .....</b>	<b>4-1</b>
<b>5</b>	<b>FINDINGS.....</b>	<b>5-1</b>

## LIST OF FIGURES

<b><u>Figure</u></b>	<b><u>Title</u></b>	<b><u>Page</u></b>
1-1	Site Map.....	1-2
3-1	Water Table Elevations in the Surficial Aquifer, June 17, 2008.....	3-4

**TABLE OF CONTENTS (Continued)**

**LIST OF TABLES**

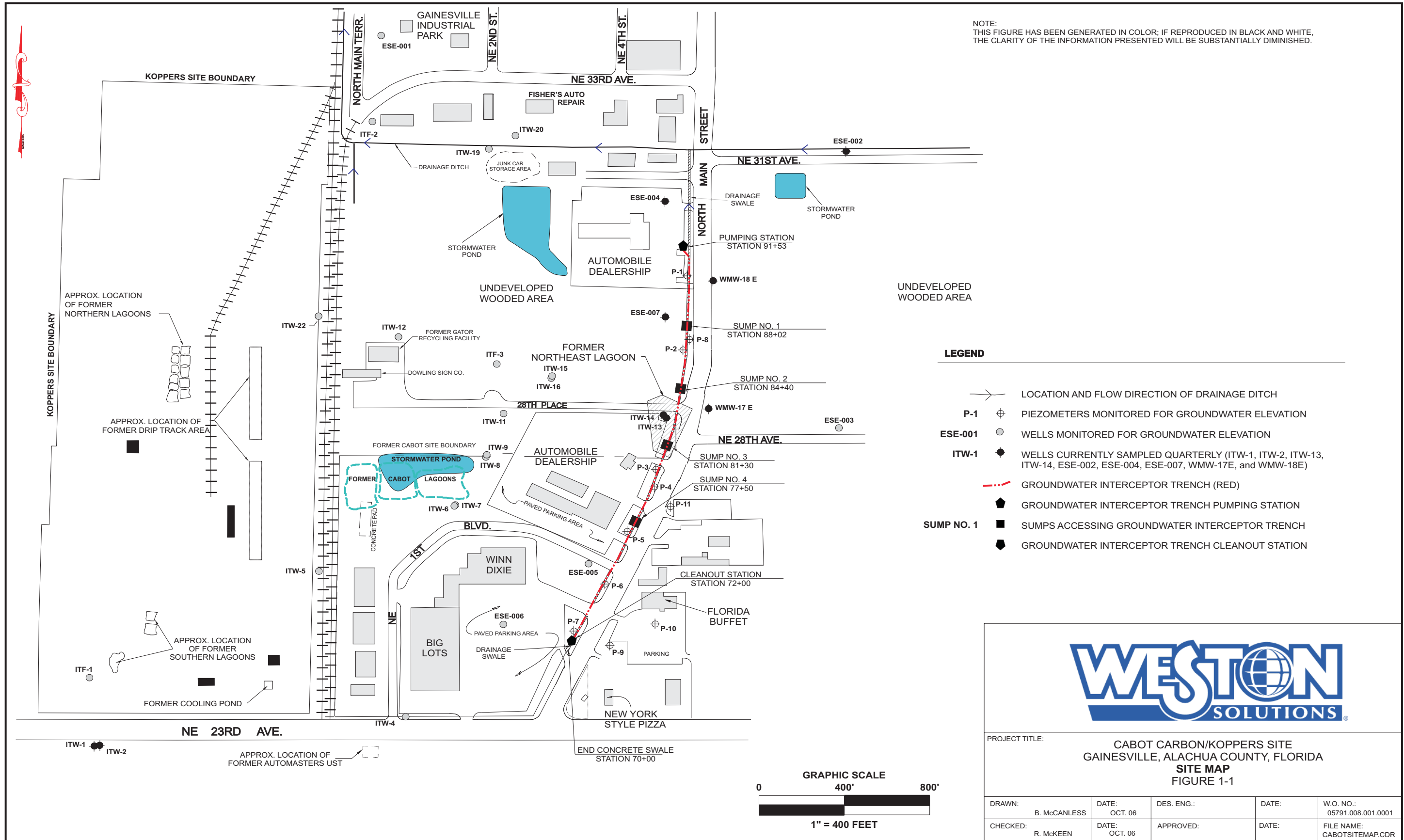
<b><u>Table</u></b>	<b><u>Title</u></b>	<b><u>Page</u></b>
2-1	Monitoring Wells Sampled and Corresponding Analytical Parameters, Second Quarter 2008.....	2-2
3-1	Groundwater Elevation Data Summary, Eastern Portion of Cabot Carbon/Koppers Superfund Site, June 17, 2008.....	3-3
4-1	Summary of Surficial Aquifer Groundwater Analytical Data Exceeding ROD Cleanup Goals, June 2008.....	4-2

**LIST OF APPENDICES**

- APPENDIX A – Well Purge Data
- APPENDIX B – Laboratory Analytical Data Package
- APPENDIX C – Summary of Pre-Remedial Action Groundwater Data  
Eastern Site, Gainesville, Florida
- APPENDIX D – Summary of Recent Post-Remedial Action Groundwater Data  
Eastern Site, Gainesville, Florida

**SECTION 1**  
**BACKGROUND**

The purpose of the second quarter 2008 sampling conducted by Weston Solutions, Inc., (WESTON®) is to evaluate the effectiveness of the groundwater collection system that has been installed along the border of the eastern portion of the Cabot Carbon/Koppers Superfund Site (Eastern Site) (Figure 1-1). The current post-remedial groundwater monitoring program for the Eastern Site includes sampling the following wells on a quarterly basis: ITW-13, ITW-14, WMW-17E, WMW-18E, ESE-002, ESE-004, ESE-007, and up-gradient monitoring wells ITW-1 and ITW-2. This report summarizes the results of the second quarter 2008 groundwater sampling event.



## **SECTION 2**

### **METHODOLOGY**

Groundwater samples were collected from the Eastern Site monitoring wells by Brant McCannless, P.G. of Weston Solutions, Inc. with project management by Ralph McKeen, P.E. of Weston Solutions, Inc. The subject samples were analyzed for the parameters listed in Table 2-1. Physical parameter readings (e.g., specific conductance and temperature) measured during well sampling is provided in Appendix A of this report.

Chromium concentrations that have been periodically detected in samples from a few of the surficial aquifer monitoring wells are likely attributable to sediment in the samples, rather than actual chromium dissolved in the groundwater. For this reason, following the well purge and collection of samples for benzene, ethyl benzene, toluene and xylene (BETX), phenol, pentachlorophenol (PCP), and polynuclear aromatic hydrocarbons (PAHs) analyses, the sediment in the well was allowed time to settle prior to collection of the samples for metals analyses. This settling period did not exceed 24 hours for any well sampled.

**Table 2-1**

**Monitoring Wells Sampled and Corresponding Analytical Parameters,  
Second Quarter 2008**

<b>Groundwater</b>			
<b>Aquifer</b>	<b>Wells Sampled</b>	<b>Parameters</b>	<b>Analytical Method</b>
Surficial	ITW-1, ITW-2, ESE-002, ESE-004, ESE-007, ITW-13, ITW-14, WMW-17E, and WMW-18E	Anthracene	8310
		Phenanthrene	
		Acenaphthylene	
		Acenaphthene	
		Fluorene	
		Pyrene	
		Naphthalene	
		Fluoranthene	
		Benzo(a)pyrene	
		Benzo(a)anthracene	
		Benzo(b)fluoranthene	
		Benzo(k)fluoranthene	
		Dibenzo(a,h)anthracene	
		Indeno(1,2,3-c,d)pyrene	
Chrysene			
SVOCs (Phenol)	8270C		
Pentachlorophenol (PCP)			
Arsenic	6010		
Chromium			
Benzene	SW 846 8260B		
Ethyl benzene			
Toluene, & Xylene (BETX)			

## SECTION 3

### WATER LEVEL MEASUREMENTS

To assist in evaluating the interceptor trench's effectiveness, water level measurements were collected on June 17, 2008, from 24 Eastern Site monitoring wells, 10 piezometers, and 4 sumps along the interceptor trench. Monitor wells/piezometer ITW-3, ITW-10, ITW-21, and P-1 were abandoned historically. Car dealership construction activities around surficial aquifer monitor wells ITW-15, ITW-16, and piezometer P8 have been completed and the wells/piezometer have been reconstructed with flushmounts/minor stickup surface completions. The wells/piezometer will be resurveyed to obtain corrected well casing elevations for precise water level elevation data. All other wells installed at the site are in good repair and, with the exception of abandoned monitor wells ITW-3, ITW-10, ITW-12, ITW-21, and piezometer P-1 are included in the water level measurements normally taken at the site. These wells are not included in the determination of the potentiometric surface.

Historically, wells ITW-17 and ITW-18 were replaced by WMW-17E and WMW-18E. A new car dealership (Gatorland Toyota) was developed in 2007 east of North Main Street in the vicinity of monitor wells WMW-17E and WMW-18E. The site development activities included raising this once low area to match the roadway elevations of North Main Street. Consequently, WMW-17E and WMW-18E were extended and a new concrete pad, bollards, and protective casing installed in February 2007. The top of casing elevations used for this sampling event were measured from the site development surveyed existing grade elevations. These wells are planned to be re-surveyed at the same time as reconstructed wells/piezometer ITW-15, ITW-16, and P-8.

The surveyed elevation and water level data for each well were utilized to calculate the groundwater elevation at each location. The elevation of each well was established by registered Florida land surveyors. Groundwater elevations collected from the Eastern Site are summarized in Table 3-1. Figure 3-1 shows the water level elevations and groundwater flow directions in the upper surficial aquifer measured on June 17, 2008.



### **3.1 SURFICIAL AQUIFER**

Based on the groundwater elevations measured in the surficial aquifer, the groundwater flow direction beneath the southern part of the Cabot Carbon/Koppers site is to the northeast toward the groundwater interceptor trench (see Figure 3-1). Based on the June 2008 groundwater elevation data, the average hydraulic gradient in the southern portion of the Eastern Site is calculated to be approximately  $4.67 \times 10^{-3}$  ft/ft. Beneath the northern part of the Eastern Site, the groundwater flow direction is to the north-northeast and the average hydraulic gradient in this area is approximately  $7.48 \times 10^{-3}$  ft/ft. Groundwater elevations indicate that the interceptor trench maintains effective control of the groundwater in the upper surficial aquifer. For example, groundwater in the area of well WMW-18E continues to flow west towards the interceptor trench (see Figure 3-1).

Additionally, the groundwater flow directions shown by the overall potentiometric surface indicate that the groundwater flow direction in the surficial aquifer is generally toward the interceptor trench. These data further substantiate that the Eastern Site interceptor trench is collecting groundwater from the eastern and western sides of the trench.

### **3.2 INTERMEDIATE AQUIFER**

Based on groundwater elevations from the three intermediate aquifer wells, the groundwater flow direction in this aquifer continues to be generally toward the northeast. A downward hydraulic gradient continues to be present between the surficial and intermediate aquifers. On June 17, 2008, a head difference of approximately 32.11 feet was measured between surficial aquifer well ITW-11 and intermediate aquifer well ITF-3 (see Table 3-1).

**Table 3-1**  
**Groundwater Depths and Elevations**  
**June 2008 Sampling Event<sup>1</sup>**  
**Eastern Portion of Cabot Carbon/Koppers Superfund Site**  
**Gainesville, Alachua County, Florida**

Monitoring Well ID	Top of Casing/Sump Elevation Feet (MSL) <sup>3</sup>	June 17, 2008 Field Measured Water Depth Below Top of Casing (Feet) <sup>2</sup>	Groundwater Elevation Feet (MSL)	Depth of Screened Interval <sup>4</sup>
<b>ITW-1</b>	<b>188.47</b>	<b>11.19</b>	<b>177.28</b>	<b>15.50 - 25.50</b>
<b>ITW-2</b>	<b>187.48</b>	<b>10.15</b>	<b>177.33</b>	<b>5.50 - 15.50</b>
ITW-3	Does not currently exist.	Does not currently exist.	Does not currently exist.	Does not currently exist.
ITW-4	187.82	13.15	174.67	5.00 - 15.00
ITW-5	185.34	11.04	174.30	19.00 - 24.00
ITW-6	183.10	11.45	171.65	18.50 - 28.50
ITW-7 <sup>5</sup>	182.97	11.33	171.64	8.50 - 18.50
ITW-8	180.81	9.18	171.63	18.50 - 28.50
ITW-9	180.30	9.15	171.15	8.00 - 18.00
ITW-10	Does not currently exist.	Does not currently exist.	Does not currently exist.	Does not currently exist.
ITW-11	180.91	9.72	171.19	6.00 - 16.00
ITW-12	Does not currently exist.	Does not currently exist.	Does not currently exist.	Does not currently exist.
<b>ITW-13</b>	<b>174.14</b>	<b>8.23</b>	<b>165.91</b>	<b>23.00 - 33.00</b>
<b>ITW-14<sup>6</sup></b>	<b>174.80</b>	<b>Approx. 0.2 foot product</b>	<b>Not Measured</b>	<b>5.00 - 15.00</b>
ITW-15 <sup>7</sup>	179.30	7.04	Top of Casing Elev. Changed	20.00 - 30.00
ITW-16 <sup>7</sup>	178.86	6.36	Top of Casing Elev. Changed	12.50 - 22.50
ITW-19	169.74	9.71	160.03	11.00 - 31.00
ITW-20	169.77	10.28	159.49	11.00 - 31.00
ITW-21 <sup>5</sup>	Does not currently exist.	Does not currently exist.	Does not currently exist.	Does not currently exist.
ITW-22 <sup>5</sup>	178.61	10.99	167.62	3.00 - 13.00
ESE-001	162.05	8.81	153.24	6.50 - 21.20
<b>ESE-002</b>	<b>169.08</b>	<b>7.01</b>	<b>162.07</b>	<b>8.00 - 23.00</b>
ESE-003	171.86	6.31	165.55	9.00 - 29.00
<b>ESE-004<sup>5</sup></b>	<b>166.69</b>	<b>9.02</b>	<b>157.67</b>	<b>6.50 - 21.50</b>
ESE-005	178.23	10.19	168.04	9.50 - 29.50
ESE-006	180.39	9.12	171.27	7.50 - 27.50
<b>ESE-007</b>	<b>168.42</b>	<b>4.42</b>	<b>164.00</b>	<b>7.50 - 22.50</b>
<b>WMW-17E<sup>5</sup></b>	<b>175.50</b>	<b>9.28</b>	<b>166.22</b>	<b>9.00 - 29.00</b>
<b>WMW-18E</b>	<b>172.69</b>	<b>6.15</b>	<b>166.54</b>	<b>9.00 - 29.00</b>
ITF-1	186.63	23.15	163.48	69.00 - 79.00
ITF-2	168.95	37.90	131.05	71.00 - 81.00
ITF-3	176.89	37.81	139.08	69.50 - 79.50
P-1	Does not currently exist.	Does not currently exist.	Does not currently exist.	Does not currently exist.
P-2	169.77	5.83	163.94	5.18 - 10.18
P-3	171.05	5.74	165.31	5.00 - 10.00
P-4	172.26	6.60	165.66	5.00 - 10.00
P-5	173.20	5.50	167.70	6.65 - 11.65
P-6	177.07	9.92	167.15	7.50 - 12.50
P-7	179.24	10.80	168.44	7.50 - 12.50
P-8 <sup>7</sup>	168.44	8.05	Top of Casing Elev. Changed	5.00 - 10.00
P-9	181.35	11.38	169.97	10.00 - 15.00
P-10	180.23	11.35	168.88	10.00 - 15.00
P-11	173.35	7.18	166.17	10.00 - 15.00
Sump No. 1	168.95	6.80	162.15	Sump
Sump No. 2	169.80	6.40	163.40	Sump
Sump No. 3	170.94	6.80	164.14	Sump
Sump No. 4	173.27	7.65	165.62	Sump

Notes: 1. Depths to water measured on June 17, 2008.

2. All depths measured in feet below top of casing. Elevations are in feet above mean sea level (MSL).

3. Top of casing elevations measured by registered Florida Land Surveyors.

4. Screened intervals measured from ground surface.

5. Wells ITW-7, ITW-21, ITW-22, ESE-004, and WMW-17E were repaired and resurveyed in July 2000.

6. Depth to water in ITW-14 was not measured due to tar in the well. Estimated thickness of product determined by placing bailer at bottom of well and then measuring thickness of product.

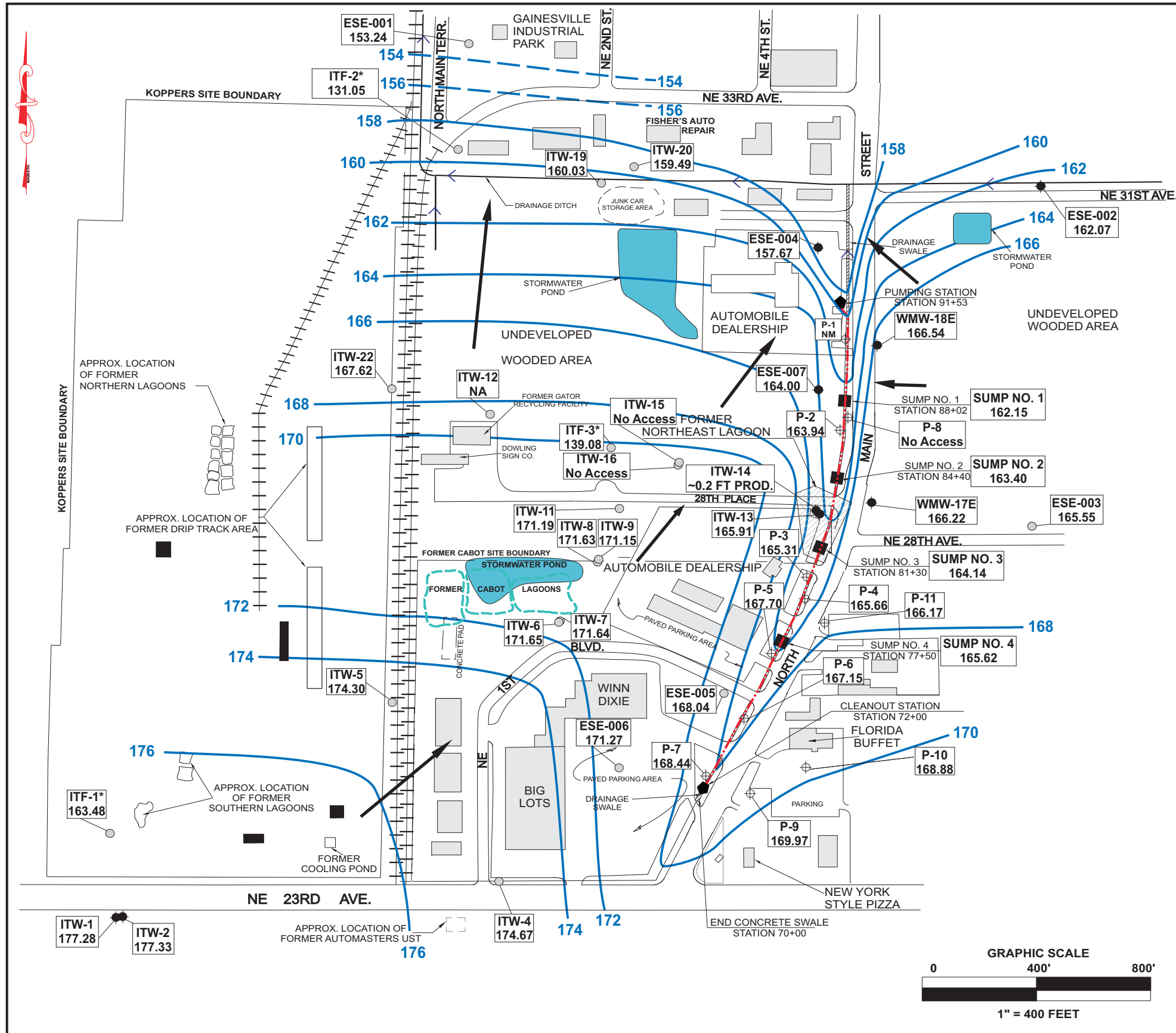
7. Wells ITW-15, ITW-16, and piezometer P-8 were cut off to grade in September 2007 and covered for protection during construction activities.

When construction activities are complete, these wells will be reconstructed as flush mount wells and resurveyed.

Land around wells WMW-17E and WMW-18E was raised in late 2006. Wells were raised approximately 3 feet.

All elevations associated with WMW-17E and WMW-18E are approximate until wells are resurveyed in late 2007

Wells sampled in June 2008 for the normal quarterly sampling event are bolded



NOTE:  
THIS FIGURE HAS BEEN GENERATED IN COLOR; IF REPRODUCED IN BLACK AND WHITE,  
THE CLARITY OF THE INFORMATION PRESENTED WILL BE SUBSTANTIALLY DIMINISHED.

### LEGEND

- P-1 ⊕ PIEZOMETERS MONITORED FOR GROUNDWATER ELEVATION
- ESE-001 ○ WELLS MONITORED FOR GROUNDWATER ELEVATION
- ITW-1 ● WELLS CURRENTLY SAMPLED QUARTERLY INCLUDE (ITW-1, ITW-2, ITW-13, ITW-14, ESE-002, EWE-004, ESE-007, WMW-17E, AND WMW-18E)
- LOCATION AND FLOW DIRECTION OF DRAINAGE DITCH
- ITW-1 177.28 GROUNDWATER ELEVATIONS (FT MSL) MEASURED ON JUNE 17, 2008
- GROUNDWATER ELEVATION CONTOURS FT MSL (SOLID BLUE) CONTOUR INTERVAL = TWO FEET
- - - BLUE DASHED WHERE INFERRED
- ← ARROWS INDICATE GROUNDWATER FLOW DIRECTION
- - - - GROUNDWATER INTERCEPTOR TRENCH (RED DASHED/DOTTED)
- ◆ GROUNDWATER INTERCEPTOR TRENCH PUMPING STATION
- SUMPS ACCESSING GROUNDWATER INTERCEPTOR TRENCH
- ◆ GROUNDWATER INTERCEPTOR TRENCH CLEANOUT STATION
- NM NOT MEASURED
- NA NOT AVAILABLE
- DRY WELL WAS DRY AT TIME OF MEASUREMENT
- TD TOTAL DEPTH ELEVATION OF DRY WELL
- \* Wells ITF-1, ITF-2, and ITF-3 are completed in the intermediate aquifer. Groundwater elevation data not part of this potentiometric surface map.

Well ITW-14 has product and the water level indicator is not used. When bailed for sampling, the product thickness is estimated. During the June 2008 sampling event, product thickness in ITW-14 was measured at approximately 0.2 foot thick.

Construction activities have been completed in the area of wells ITW-15, ITW-16, and piezometer P-8. Water levels have been taken; however, the top of casings have been altered and they will be resurveyed to obtain accurate water elevation data.



PROJECT TITLE:				
CABOT CARBON/KOPPERS SITE GAINESVILLE, ALACHUA COUNTY, FLORIDA WATER TABLE ELEVATIONS IN THE SURFICIAL AQUIFER JUNE 17, 2008 FIGURE 3-1				
DRAWN:	DATE:	DES. ENG.:	DATE:	W.O. NO.:
B. McCANLESS	JULY 08			05791.008.001.0001
CHECKED:	DATE:	APPROVED:	DATE:	FILE NAME:
R. McKEEN	JULY 08			JUNE-08 POTMAP.CDR

## SECTION 4

### ANALYTICAL RESULTS

The laboratory analytical data package for the monitor well samples collected at the Eastern Site on June 19, 2008 is provided in Appendix B, and a summary of these data exceeding Record of Decision (ROD) cleanup goals is contained in Table 4-1. A historical summary of the monitor well data collected prior to the installation of the remedial system is provided in Appendix C. A summary of the recent post-remedial construction monitor well data is provided in Appendix D. Discussion of the second quarter 2008 sampling results is provided below.

Arsenic was detected during the June 2008 sampling event in ITW-13 at 10 µg/L. No other arsenic or chromium were detected in any well. Historically, highly variable concentrations of arsenic and chromium have been reported for various wells for preceding quarters. These concentrations can ostensibly be attributed to turbidity in the wells.

Benzene concentrations exceeded the ROD cleanup goals of 1 µg/L in groundwater samples collected from ITW-13 (73 µg/L), ITW-14 (28 µg/L), and ESE-007 (11 µg/L). Naphthalene in ITW-13 (38 µg/L) and ITW-14 (260 µg/L) exceeded the ROD cleanup goal of 18 µg/L. Acenaphthylene concentrations exceeded the ROD cleanup goal of 130 µg/L in ITW-14 (260 µg/L). Phenol concentrations exceeded the ROD cleanup goal of 2,630 µg/L in ITW-13 (8,300 µg/L) and ESE-007 (2,700 µg/L).

Potentially carcinogenic PAH's were below the laboratory reporting limit of 1.9 µg/L in all wells this quarter except ITW-14. The ROD cleanup goal is 0.003 µg/L for the combination of all potentially carcinogenic PAH's. Well ITW-14 had combined PAHs of 29 µg/L. Approximately 0.2 foot of free product was observed in monitoring well ITW-14 during the June 2008 sampling event. Wells ITW-13 and ITW-14 are located within the former Northeast Lagoon. Groundwater in the area of these wells migrates toward the interceptor trench.

**Table 4-1**

**Summary of Surficial Aquifer Groundwater Analytical Data Exceeding ROD Cleanup Goals  
Eastern Portion of Cabot Carbon/Koppers Superfund Site  
June 19, 2008**

<b>Well Designation/ Screened Interval (feet)</b>	<b>Parameter</b>	<b>Results (µg/L)</b>	<b>RL (µg/L)</b>	<b>ROD Cleanup Goal (µg/L)</b>
ITW-13 / 23-33	Benzene	73	5	1
	Naphthalene	38	9.3	18
	Phenol	8,300	470	2,630
ITW-14 / 5-15	Benzene	28	5	1
	Acenaphthylene	260	9.3	130
	Naphthalene	260	9.3	18
	*Total Potentially Carcinogenic PAHs	29	1.9	0.003
ESE-007 / 7.5-22.5	Benzene	11	2	1
	Phenol	2,700	190	2,630

(µg/L) = micrograms per liter

RL = Report Limit

ROD = Record of Decision

\* Total Potentially Carcinogenic PAHs include: Benzo (a) anthracene, Benzo (a) pyrene,  
Benzo (b) flouranthene, Benzo (k) flouranthene, Chrysene, Dibenzo (a,h) anthracene, & Indeno (1,2,3-cd)pyrene.

## **SECTION 5**

### **FINDINGS**

Based on the groundwater analytical data collected at the Eastern Site during the second quarter 2008 sampling event, WESTON offers the following findings:

- The groundwater interceptor trench continues to maintain effective hydraulic control of the upper surficial aquifer.
- The groundwater interceptor trench continues to effectively capture constituents from the Northeast Lagoon area in the surficial aquifer.
- The overall distribution of constituents appears to be similar to that reported from previous quarterly sampling events for the majority of the site, with the exceptions noted previously in Section 4.

The next quarterly groundwater-sampling event for the Eastern Site will occur about the third week of September 2008. The wells to be sampled in the third quarter 2008 are ITW-1, ITW-2, ITW-13, ITW-14, WMW-17E, WMW-18E, ESE-002, ESE-004, and ESE-007.

**APPENDIX A**  
**WELL PURGE DATA**

**Appendix A**

**Well Purge Data  
Eastern Portion of Cabot Carbon/Koppers Superfund Site  
Purge - June 18, 2008  
Sample - June 19, 2008**

WELL ID	Purge/Sample Dates	Time	VOLUME (GAL)	TEMPERATURE (°C)	pH	SPECIFIC CONDUCTANCE (µS/cm)	DISSOLVED OXYGEN (mg/L)	TURBIDITY (NTU)	ODOR YES/NO	PURGE DRY YES/NO
ITW-1	Purge; 6/18/08	0842	2	23.86	5.31	150	3.67	8.18		
ITW-1	Purge; 6/18/08	0847	4	23.45	5.30	132	3.99	5.52		
ITW-1	Purge; 6/18/08	0852	6	23.31	5.27	130	3.48	5.03		
ITW-1	Purge; 6/18/08	0857	8	23.02	5.29	130	3.47	5.26	NO	NO
ITW-1	Sample; 6/19/08	0840	NA	23.28	5.06	135	1.81	0.79		
ITW-2	Purge; 6/18/08	0905	0.5	23.43	5.01	134	2.41	33.40		
ITW-2	Purge; 6/18/08	0909	1.0	23.24	5.10	136	2.69	67.30		
ITW-2	Purge; 6/18/08	0913	1.5	23.31	5.16	138	2.58	78.80		
ITW-2	Purge; 6/18/08	0918	2.0	23.04	5.14	137	2.55	60.40	NO	NO
ITW-2	Sample; 6/19/08	0855	NA	23.51	4.87	127	1.62	8.32		
ESE-002	Purge; 6/18/08	0936	2	25.27	5.19	80	1.20	47.90		
ESE-002	Purge; 6/18/08	0950	4	25.58	5.35	85	2.03	86.20		
ESE-002	Purge; 6/18/08	0955	6	24.79	5.22	124	1.47	143.00		
ESE-002	Purge; 6/18/08	0959	8	24.68	5.17	76	1.60	204.00		
ESE-002	Purge; 6/18/08	1003	10	24.58	5.15	82	1.36	271.00	Slight sulfur	NO
ESE-002	Sample; 6/19/08	0915	NA	24.96	5.08	79	1.07	18.80		
ESE-004	Purge; 6/18/08	1019	2	27.13	5.84	489	3.40	7.62		
ESE-004	Purge; 6/18/08	1024	4	26.50	5.86	496	2.67	5.61		
ESE-004	Purge; 6/18/08	1028	6	26.12	5.82	501	2.58	4.84		
ESE-004	Purge; 6/18/08	1033	8	25.99	5.82	499	2.49	4.46		
ESE-004	Purge; 6/18/08	1037	10	25.85	5.81	497	2.45	4.05	Yes/Sulfur	NO
ESE-004	Sample; 6/19/08	0945	NA	27.34	5.85	329	1.22	6.70		
ESE-007	Purge; 6/18/08	1054	2	23.50	5.49	415	2.18	85.10		
ESE-007	Purge; 6/18/08	1058	4	22.29	5.58	401	1.71	1000+		
ESE-007	Purge; 6/18/08	1102	6	21.69	5.63	406	1.45	1000+		
ESE-007	Purge; 6/18/08	1106	8	21.69	5.66	416	1.34	1000+	Yes/Sulfur &	
ESE-007	Purge; 6/18/08	1110	10	21.36	5.68	421	1.09	1000+	possible tar	
ESE-007	Purge; 6/18/08	1115	12	21.51	5.71	425	1.23	1000+	Water is foamy	NO
ESE-007	Sample; 6/19/08	1010	NA	25.91	5.43	392	1.81	33.50		
ITW-13	Purge; 6/18/08	1403	2	28.31	5.08	207	1.14	18.00		
ITW-13	Purge; 6/18/08	1411	4	25.98	4.93	200	0.81	5.52		
ITW-13	Purge; 6/18/08	1415	6	25.60	4.82	201	1.22	5.42		
ITW-13	Purge; 6/18/08	1420	8	25.58	4.78	199	0.85	6.23		
ITW-13	Purge; 6/18/08	1424	10	25.90	4.74	198	0.91	9.29	Yes/Sulfur &	
ITW-13	Purge; 6/18/08	1430	12	25.70	4.81	196	0.96	12.50	possible slight tar	NO
ITW-13	Sample; 6/19/08	1050	NA	26.45	4.86	203	0.94	7.85		
ITW-14	Purge; 6/18/08	1300	3	Purge parameters not collected due to historical product in the well.					YES/Tar	YES
ITW-14	Sample; 6/19/08	1130	NA	June 18, 2008, approximately 0.2 foot product in bailer.						
WMW-17E	Purge; 6/18/08	1240	2	26.49	5.58	294	1.62	16.20		
WMW-17E	Purge; 6/18/08	1245	4	25.10	5.59	398	1.41	79.70		
WMW-17E	Purge; 6/18/08	1249	6	24.75	5.58	389	1.50	83.10		
WMW-17E	Purge; 6/18/08	1254	8	24.80	5.55	376	1.46	82.50		
WMW-17E	Purge; 6/18/08	1258	10	24.96	5.52	381	1.49	68.20		
WMW-17E	Purge; 6/18/08	1302	12	24.89	5.51	385	1.45	79.50	Yes/Slight Sulfur	NO
WMW-17E	Sample; 6/19/08	1150	NA	26.65	5.48	363	1.18	17.90		
WMW-18E	Purge; 6/18/08	1315	2	22.67	5.10	224	2.58	8.77	Greenish color to water.	
WMW-18E	Purge; 6/18/08	1319	4	25.81	5.39	308	1.39	61.40		
WMW-18E	Purge; 6/18/08	1323	6	25.31	5.44	317	1.61	273.00		
WMW-18E	Purge; 6/18/08	1326	8	25.19	5.47	323	1.62	409.00		
WMW-18E	Purge; 6/18/08	1330	10	24.91	5.46	329	1.61	747.00		
WMW-18E	Purge; 6/18/08	1335	12	24.60	5.48	327	1.63	1000+	Yes/Slight Sulfur	NO
WMW-18E	Sample; 6/19/08	1215	NA	23.62	5.31	283	1.28	26.10	Duplicate collected here.	

Notes: °C = degrees Celsius; µS/cm = microSeimens per centimeter; mg/L = milligrams per liter, parts per million;  
NTU = Nephelometric Turbidity Units



**APPENDIX B**  
**LABORATORY ANALYTICAL DATA PACKAGE**

## ANALYTICAL REPORT

Job Number: 680-37864-1

Job Description: Cabot

For:

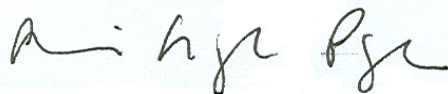
Weston Solutions, Inc.

5430 Metric Place

Suite 100

Norcross, GA 30092

Attention: Mr. Ralph McKeen



---

Abbie Page

Project Manager I

abbie.page@testamericainc.com

07/09/2008

The test results in this report meet all NELAP requirements for parameters for which accreditation is required or available. Any exceptions to NELAP requirements are noted in this report. Pursuant to NELAP, this report may not be reproduced, except in full, without the written approval of the laboratory. All questions regarding this test report should be directed to the TestAmerica Project Manager who signed this test report.

**Job Narrative**  
**680-J37864-1**

**Comments**

No additional comments.

**Receipt**

Method(s) 8260B: The following sample(s) submitted for volatiles analysis was received with insufficient preservation (pH >2): DUPLICATE (680-37864-10), WMW-18E (680-37864-9).

Method(s) 8260B: The following sample(s) was received with headspace in the sample vial: WMW-18E (680-37864-9). All of the sample vials have headspace in them.

All other samples were received in good condition within temperature requirements.

**GC/MS VOA**

No analytical or quality issues were noted.

**GC/MS Semi VOA**

Method(s) 8270C: The following sample(s) was diluted due to the nature of the sample matrix: ESE-007 (680-37864-7), ITW-13 (680-37864-3), ITW-14 (680-37864-4). Elevated reporting limits (RLs) are provided.

Method(s) 8270C: Due to the level of dilution required for the following sample(s), surrogate recoveries are not reported: ESE-007 (680-37864-7), ITW-13 (680-37864-3), ITW-14 (680-37864-4).

No other analytical or quality issues were noted.

**HPLC**

Due to the level of dilution required for the following sample(s), surrogate recoveries are not reported: ITW-14.

No other analytical or quality issues were noted.

**Metals**

No analytical or quality issues were noted.

**Organic Prep**

No analytical or quality issues were noted.

**VOA Prep**

No analytical or quality issues were noted.

## METHOD SUMMARY

Client: Weston Solutions, Inc.

Job Number: 680-37864-1

Description	Lab Location	Method	Preparation Method
<b>Matrix</b> <b>Water</b>			
Volatile Organic Compounds by GC/MS	TAL SAV	SW846 8260B	
Purge-and-Trap	TAL SAV		SW846 5030B
Semivolatile Compounds by Gas Chromatography/Mass Spectrometry (GC/MS)	TAL SAV	SW846 8270C	
Continuous Liquid-Liquid Extraction	TAL SAV		SW846 3520C
Polynuclear Aromatic Hydrocarbons	TAL PEN	SW846 8310	
Continuous Liquid-Liquid Extraction	TAL PEN		SW846 3520C
Inductively Coupled Plasma - Atomic Emission Spectrometry	TAL SAV	SW846 6010B	
Acid Digestion of Waters for Total Recoverable or	TAL SAV		SW846 3005A

### Lab References:

TAL PEN = TestAmerica Pensacola

TAL SAV = TestAmerica Savannah

### Method References:

SW846 = "Test Methods For Evaluating Solid Waste, Physical/Chemical Methods", Third Edition, November 1986 And Its Updates.

## SAMPLE SUMMARY

Client: Weston Solutions, Inc.

Job Number: 680-37864-1

<b>Lab Sample ID</b>	<b>Client Sample ID</b>	<b>Client Matrix</b>	<b>Date/Time Sampled</b>	<b>Date/Time Received</b>
680-37864-1	ITW-1	Water	06/19/2008 0840	06/20/2008 1315
680-37864-2	ITW-2	Water	06/19/2008 0855	06/20/2008 1315
680-37864-3	ITW-13	Water	06/19/2008 1050	06/20/2008 1315
680-37864-4	ITW-14	Water	06/19/2008 1130	06/20/2008 1315
680-37864-5	ESE-002	Water	06/19/2008 0915	06/20/2008 1315
680-37864-6	ESE-004	Water	06/19/2008 0945	06/20/2008 1315
680-37864-7	ESE-007	Water	06/19/2008 1010	06/20/2008 1315
680-37864-8	WMW-17E	Water	06/19/2008 1150	06/20/2008 1315
680-37864-9	WMW-18E	Water	06/19/2008 1215	06/20/2008 1315
680-37864-10FD	DUPLICATE	Water	06/19/2008 0000	06/20/2008 1315
680-37864-11EB	EQUIPMENT BLANK	Water	06/19/2008 1110	06/20/2008 1315
680-37864-12TB	TB-01	Water	06/19/2008 0000	06/20/2008 1315

# Analytical Data

Client: Weston Solutions, Inc.

Job Number: 680-37864-1

Client Sample ID: ITW-1

Lab Sample ID: 680-37864-1

Client Matrix: Water

Date Sampled: 06/19/2008 0840

Date Received: 06/20/2008 1315

---

## 8260B Volatile Organic Compounds by GC/MS

Method: 8260B

Analysis Batch: 680-110631

Instrument ID: GC/MS Volatiles - A

Preparation: 5030B

Lab File ID: a0770.d

Dilution: 1.0

Initial Weight/Volume: 5 mL

Date Analyzed: 07/03/2008 0111

Final Weight/Volume: 5 mL

Date Prepared: 07/03/2008 0111

Analyte	Result (ug/L)	Qualifier	RL
Benzene	<1.0		1.0
Ethylbenzene	<1.0		1.0
Methyl tert-butyl ether	<10		10
Toluene	<1.0		1.0
Xylenes, Total	<2.0		2.0

Surrogate	%Rec	Acceptance Limits
4-Bromofluorobenzene	100	75 - 120
Dibromofluoromethane	104	75 - 121
Toluene-d8 (Surr)	93	75 - 120

# Analytical Data

Client: Weston Solutions, Inc.

Job Number: 680-37864-1

Client Sample ID: ITW-2

Lab Sample ID: 680-37864-2

Date Sampled: 06/19/2008 0855

Client Matrix: Water

Date Received: 06/20/2008 1315

---

## 8260B Volatile Organic Compounds by GC/MS

Method: 8260B

Analysis Batch: 680-110631

Instrument ID: GC/MS Volatiles - A

Preparation: 5030B

Lab File ID: a0771.d

Dilution: 1.0

Initial Weight/Volume: 5 mL

Date Analyzed: 07/03/2008 0131

Final Weight/Volume: 5 mL

Date Prepared: 07/03/2008 0131

Analyte	Result (ug/L)	Qualifier	RL
Benzene	<1.0		1.0
Ethylbenzene	<1.0		1.0
Methyl tert-butyl ether	<10		10
Toluene	<1.0		1.0
Xylenes, Total	<2.0		2.0

Surrogate	%Rec	Acceptance Limits
4-Bromofluorobenzene	100	75 - 120
Dibromofluoromethane	105	75 - 121
Toluene-d8 (Surr)	94	75 - 120

**Analytical Data**

Client: Weston Solutions, Inc.

Job Number: 680-37864-1

**Client Sample ID:** ITW-13

Lab Sample ID: 680-37864-3

Date Sampled: 06/19/2008 1050

Client Matrix: Water

Date Received: 06/20/2008 1315

---

**8260B Volatile Organic Compounds by GC/MS**

Method: 8260B

Analysis Batch: 680-110631

Instrument ID: GC/MS Volatiles - A

Preparation: 5030B

Lab File ID: a0772.d

Dilution: 5.0

Initial Weight/Volume: 5 mL

Date Analyzed: 07/03/2008 0150

Final Weight/Volume: 5 mL

Date Prepared: 07/03/2008 0150

Analyte	Result (ug/L)	Qualifier	RL
Benzene	73		5.0
Ethylbenzene	320		5.0
Methyl tert-butyl ether	<50		50
Toluene	320		5.0
Xylenes, Total	200		10

Surrogate	%Rec	Acceptance Limits
4-Bromofluorobenzene	107	75 - 120
Dibromofluoromethane	100	75 - 121
Toluene-d8 (Surr)	91	75 - 120



## Analytical Data

Client: Weston Solutions, Inc.

Job Number: 680-37864-1

Client Sample ID: ITW-14

Lab Sample ID: 680-37864-4

Date Sampled: 06/19/2008 1130

Client Matrix: Water

Date Received: 06/20/2008 1315

---

### 8260B Volatile Organic Compounds by GC/MS

Method: 8260B

Analysis Batch: 680-110631

Instrument ID: GC/MS Volatiles - A

Preparation: 5030B

Lab File ID: a0773.d

Dilution: 5.0

Initial Weight/Volume: 5 mL

Date Analyzed: 07/03/2008 0210

Final Weight/Volume: 5 mL

Date Prepared: 07/03/2008 0210

Analyte	Result (ug/L)	Qualifier	RL
Benzene	28		5.0
Ethylbenzene	120		5.0
Methyl tert-butyl ether	<50		50
Toluene	430		5.0
Xylenes, Total	380		10

Surrogate	%Rec	Acceptance Limits
4-Bromofluorobenzene	108	75 - 120
Dibromofluoromethane	102	75 - 121
Toluene-d8 (Surr)	95	75 - 120

**Analytical Data**

Client: Weston Solutions, Inc.

Job Number: 680-37864-1

**Client Sample ID: ESE-002**

Lab Sample ID: 680-37864-5

Date Sampled: 06/19/2008 0915

Client Matrix: Water

Date Received: 06/20/2008 1315

---

**8260B Volatile Organic Compounds by GC/MS**

Method: 8260B

Analysis Batch: 680-110631

Instrument ID: GC/MS Volatiles - A

Preparation: 5030B

Lab File ID: a0774.d

Dilution: 1.0

Initial Weight/Volume: 5 mL

Date Analyzed: 07/03/2008 0229

Final Weight/Volume: 5 mL

Date Prepared: 07/03/2008 0229

Analyte	Result (ug/L)	Qualifier	RL
Benzene	<1.0		1.0
Ethylbenzene	<1.0		1.0
Methyl tert-butyl ether	<10		10
Toluene	<1.0		1.0
Xylenes, Total	<2.0		2.0

Surrogate	%Rec	Acceptance Limits
4-Bromofluorobenzene	101	75 - 120
Dibromofluoromethane	95	75 - 121
Toluene-d8 (Surr)	103	75 - 120

## Analytical Data

Client: Weston Solutions, Inc.

Job Number: 680-37864-1

Client Sample ID: ESE-004

Lab Sample ID: 680-37864-6

Date Sampled: 06/19/2008 0945

Client Matrix: Water

Date Received: 06/20/2008 1315

---

### 8260B Volatile Organic Compounds by GC/MS

Method: 8260B

Analysis Batch: 680-110631

Instrument ID: GC/MS Volatiles - A

Preparation: 5030B

Lab File ID: a0775.d

Dilution: 1.0

Initial Weight/Volume: 5 mL

Date Analyzed: 07/03/2008 0248

Final Weight/Volume: 5 mL

Date Prepared: 07/03/2008 0248

Analyte	Result (ug/L)	Qualifier	RL
Benzene	<1.0		1.0
Ethylbenzene	<1.0		1.0
Methyl tert-butyl ether	<10		10
Toluene	<1.0		1.0
Xylenes, Total	<2.0		2.0

Surrogate	%Rec	Acceptance Limits
4-Bromofluorobenzene	100	75 - 120
Dibromofluoromethane	104	75 - 121
Toluene-d8 (Surr)	92	75 - 120

# Analytical Data

Client: Weston Solutions, Inc.

Job Number: 680-37864-1

Client Sample ID: ESE-007

Lab Sample ID: 680-37864-7

Date Sampled: 06/19/2008 1010

Client Matrix: Water

Date Received: 06/20/2008 1315

---

## 8260B Volatile Organic Compounds by GC/MS

Method: 8260B

Analysis Batch: 680-110631

Instrument ID: GC/MS Volatiles - A

Preparation: 5030B

Lab File ID: a0776.d

Dilution: 2.0

Initial Weight/Volume: 5 mL

Date Analyzed: 07/03/2008 0308

Final Weight/Volume: 5 mL

Date Prepared: 07/03/2008 0308

Analyte	Result (ug/L)	Qualifier	RL
Benzene	11		2.0
Ethylbenzene	40		2.0
Methyl tert-butyl ether	<20		20
Toluene	170		2.0
Xylenes, Total	44		4.0

Surrogate	%Rec	Acceptance Limits
4-Bromofluorobenzene	109	75 - 120
Dibromofluoromethane	102	75 - 121
Toluene-d8 (Surr)	91	75 - 120

## Analytical Data

Client: Weston Solutions, Inc.

Job Number: 680-37864-1

Client Sample ID: **WMW-17E**

Lab Sample ID: 680-37864-8

Date Sampled: 06/19/2008 1150

Client Matrix: Water

Date Received: 06/20/2008 1315

---

### 8260B Volatile Organic Compounds by GC/MS

Method: 8260B

Analysis Batch: 680-110631

Instrument ID: GC/MS Volatiles - A

Preparation: 5030B

Lab File ID: a0777.d

Dilution: 1.0

Initial Weight/Volume: 5 mL

Date Analyzed: 07/03/2008 0327

Final Weight/Volume: 5 mL

Date Prepared: 07/03/2008 0327

Analyte	Result (ug/L)	Qualifier	RL
Benzene	<1.0		1.0
Ethylbenzene	<1.0		1.0
Methyl tert-butyl ether	<10		10
Toluene	<1.0		1.0
Xylenes, Total	<2.0		2.0

Surrogate	%Rec	Acceptance Limits
4-Bromofluorobenzene	103	75 - 120
Dibromofluoromethane	106	75 - 121
Toluene-d8 (Surr)	92	75 - 120

**Analytical Data**

Client: Weston Solutions, Inc.

Job Number: 680-37864-1

**Client Sample ID: WMW-18E**

Lab Sample ID: 680-37864-9

Date Sampled: 06/19/2008 1215

Client Matrix: Water

Date Received: 06/20/2008 1315

---

**8260B Volatile Organic Compounds by GC/MS**

Method: 8260B

Analysis Batch: 680-110631

Instrument ID: GC/MS Volatiles - A

Preparation: 5030B

Lab File ID: a0778.d

Dilution: 1.0

Initial Weight/Volume: 5 mL

Date Analyzed: 07/03/2008 0347

Final Weight/Volume: 5 mL

Date Prepared: 07/03/2008 0347

Analyte	Result (ug/L)	Qualifier	RL
Benzene	<1.0		1.0
Ethylbenzene	<1.0		1.0
Methyl tert-butyl ether	<10		10
Toluene	<1.0		1.0
Xylenes, Total	<2.0		2.0

Surrogate	%Rec	Acceptance Limits
4-Bromofluorobenzene	100	75 - 120
Dibromofluoromethane	104	75 - 121
Toluene-d8 (Surr)	92	75 - 120

# Analytical Data

Client: Weston Solutions, Inc.

Job Number: 680-37864-1

Client Sample ID: **DUPLICATE**

Lab Sample ID: 680-37864-10FD

Date Sampled: 06/19/2008 0000

Client Matrix: Water

Date Received: 06/20/2008 1315

---

## 8260B Volatile Organic Compounds by GC/MS

Method: 8260B

Analysis Batch: 680-110631

Instrument ID: GC/MS Volatiles - A

Preparation: 5030B

Lab File ID: a0779.d

Dilution: 1.0

Initial Weight/Volume: 5 mL

Date Analyzed: 07/03/2008 0406

Final Weight/Volume: 5 mL

Date Prepared: 07/03/2008 0406

Analyte	Result (ug/L)	Qualifier	RL
Benzene	<1.0		1.0
Ethylbenzene	<1.0		1.0
Methyl tert-butyl ether	<10		10
Toluene	<1.0		1.0
Xylenes, Total	<2.0		2.0

Surrogate	%Rec	Acceptance Limits
4-Bromofluorobenzene	102	75 - 120
Dibromofluoromethane	105	75 - 121
Toluene-d8 (Surr)	93	75 - 120

**Analytical Data**

Client: Weston Solutions, Inc.

Job Number: 680-37864-1

**Client Sample ID: EQUIPMENT BLANK**

Lab Sample ID: 680-37864-11EB

Date Sampled: 06/19/2008 1110

Client Matrix: Water

Date Received: 06/20/2008 1315

---

**8260B Volatile Organic Compounds by GC/MS**

Method: 8260B

Analysis Batch: 680-110631

Instrument ID: GC/MS Volatiles - A

Preparation: 5030B

Lab File ID: a0768.d

Dilution: 1.0

Initial Weight/Volume: 5 mL

Date Analyzed: 07/03/2008 0033

Final Weight/Volume: 5 mL

Date Prepared: 07/03/2008 0033

---

Analyte	Result (ug/L)	Qualifier	RL
Benzene	<1.0		1.0
Ethylbenzene	<1.0		1.0
Methyl tert-butyl ether	<10		10
Toluene	<1.0		1.0
Xylenes, Total	<2.0		2.0

---

Surrogate	%Rec	Acceptance Limits
4-Bromofluorobenzene	100	75 - 120
Dibromofluoromethane	104	75 - 121
Toluene-d8 (Surr)	91	75 - 120



# Analytical Data

Client: Weston Solutions, Inc.

Job Number: 680-37864-1

Client Sample ID: TB-01

Lab Sample ID: 680-37864-12TB

Date Sampled: 06/19/2008 0000

Client Matrix: Water

Date Received: 06/20/2008 1315

---

## 8260B Volatile Organic Compounds by GC/MS

Method: 8260B

Analysis Batch: 680-110631

Instrument ID: GC/MS Volatiles - A

Preparation: 5030B

Lab File ID: a0767.d

Dilution: 1.0

Initial Weight/Volume: 5 mL

Date Analyzed: 07/03/2008 0013

Final Weight/Volume: 5 mL

Date Prepared: 07/03/2008 0013

Analyte	Result (ug/L)	Qualifier	RL
Benzene	<1.0		1.0
Ethylbenzene	<1.0		1.0
Methyl tert-butyl ether	<10		10
Toluene	<1.0		1.0
Xylenes, Total	<2.0		2.0

Surrogate	%Rec	Acceptance Limits
4-Bromofluorobenzene	100	75 - 120
Dibromofluoromethane	105	75 - 121
Toluene-d8 (Surr)	91	75 - 120

## Analytical Data

Client: Weston Solutions, Inc.

Job Number: 680-37864-1

Client Sample ID: ITW-1

Lab Sample ID: 680-37864-1

Date Sampled: 06/19/2008 0840

Client Matrix: Water

Date Received: 06/20/2008 1315

---

### 8270C Semivolatile Compounds by Gas Chromatography/Mass Spectrometry (GC/MS)

Method:	8270C	Analysis Batch: 680-110447	Instrument ID:	GC/MS SemiVolatiles - N
Preparation:	3520C	Prep Batch: 680-109770	Lab File ID:	n0034.d
Dilution:	1.0		Initial Weight/Volume:	1060 mL
Date Analyzed:	06/26/2008 1729		Final Weight/Volume:	1 mL
Date Prepared:	06/24/2008 1432		Injection Volume:	1.0 uL

Analyte	Result (ug/L)	Qualifier	RL
Phenol	<9.4		9.4
2,4-Dimethylphenol	<9.4		9.4
Pentachlorophenol	<47		47

Surrogate	%Rec	Acceptance Limits
Phenol-d5	68	38 - 116
2-Fluorophenol	61	36 - 110
2,4,6-Tribromophenol	93	40 - 139

## Analytical Data

Client: Weston Solutions, Inc.

Job Number: 680-37864-1

Client Sample ID: ITW-2

Lab Sample ID: 680-37864-2

Date Sampled: 06/19/2008 0855

Client Matrix: Water

Date Received: 06/20/2008 1315

---

### 8270C Semivolatile Compounds by Gas Chromatography/Mass Spectrometry (GC/MS)

Method:	8270C	Analysis Batch: 680-110447	Instrument ID:	GC/MS SemiVolatiles - N
Preparation:	3520C	Prep Batch: 680-109770	Lab File ID:	n0035.d
Dilution:	1.0		Initial Weight/Volume:	1060 mL
Date Analyzed:	06/26/2008 1752		Final Weight/Volume:	1 mL
Date Prepared:	06/24/2008 1432		Injection Volume:	1.0 uL

Analyte	Result (ug/L)	Qualifier	RL
Phenol	<9.4		9.4
2,4-Dimethylphenol	<9.4		9.4
Pentachlorophenol	<47		47

Surrogate	%Rec	Acceptance Limits
Phenol-d5	81	38 - 116
2-Fluorophenol	73	36 - 110
2,4,6-Tribromophenol	101	40 - 139

# Analytical Data

Client: Weston Solutions, Inc.

Job Number: 680-37864-1

Client Sample ID: ITW-13

Lab Sample ID: 680-37864-3

Date Sampled: 06/19/2008 1050

Client Matrix: Water

Date Received: 06/20/2008 1315

## 8270C Semivolatile Compounds by Gas Chromatography/Mass Spectrometry (GC/MS)

Method:	8270C	Analysis Batch: 680-110681	Instrument ID:	GC/MS SemiVolatiles - G
Preparation:	3520C	Prep Batch: 680-109770	Lab File ID:	g3020.d
Dilution:	50		Initial Weight/Volume:	1060 mL
Date Analyzed:	07/02/2008 1950		Final Weight/Volume:	1 mL
Date Prepared:	06/24/2008 1432		Injection Volume:	1.0 uL

Analyte	Result (ug/L)	Qualifier	RL
Phenol	8300		470
2,4-Dimethylphenol	2400		470
Pentachlorophenol	<2400		2400

Surrogate	%Rec		Acceptance Limits
Phenol-d5	0	D	38 - 116
2-Fluorophenol	0	D	36 - 110
2,4,6-Tribromophenol	0	D	40 - 139

**Analytical Data**

Client: Weston Solutions, Inc.

Job Number: 680-37864-1

Client Sample ID: ITW-14

Lab Sample ID: 680-37864-4

Date Sampled: 06/19/2008 1130

Client Matrix: Water

Date Received: 06/20/2008 1315

**8270C Semivolatile Compounds by Gas Chromatography/Mass Spectrometry (GC/MS)**

Method:	8270C	Analysis Batch: 680-110716	Instrument ID:	GC/MS SemiVolatiles - G
Preparation:	3520C	Prep Batch: 680-109770	Lab File ID:	g3045b.d
Dilution:	100		Initial Weight/Volume:	1060 mL
Date Analyzed:	07/03/2008 1723		Final Weight/Volume:	1 mL
Date Prepared:	06/24/2008 1432		Injection Volume:	1.0 uL

Analyte	Result (ug/L)	Qualifier	RL
Phenol	<940		940
2,4-Dimethylphenol	6100		940
Pentachlorophenol	<4700		4700
Surrogate	%Rec		Acceptance Limits
Phenol-d5	0	D	38 - 116
2-Fluorophenol	0	D	36 - 110
2,4,6-Tribromophenol	0	D	40 - 139

**Analytical Data**

Client: Weston Solutions, Inc.

Job Number: 680-37864-1

**Client Sample ID: ESE-002**

Lab Sample ID: 680-37864-5

Date Sampled: 06/19/2008 0915

Client Matrix: Water

Date Received: 06/20/2008 1315

---

**8270C Semivolatile Compounds by Gas Chromatography/Mass Spectrometry (GC/MS)**

Method:	8270C	Analysis Batch: 680-110447	Instrument ID:	GC/MS SemiVolatiles - N
Preparation:	3520C	Prep Batch: 680-109770	Lab File ID:	n0038.d
Dilution:	1.0		Initial Weight/Volume:	1060 mL
Date Analyzed:	06/26/2008 1902		Final Weight/Volume:	1 mL
Date Prepared:	06/24/2008 1432		Injection Volume:	1.0 uL

---

Analyte	Result (ug/L)	Qualifier	RL
Phenol	<9.4		9.4
2,4-Dimethylphenol	<9.4		9.4
Pentachlorophenol	<47		47

---

Surrogate	%Rec	Acceptance Limits
Phenol-d5	71	38 - 116
2-Fluorophenol	64	36 - 110
2,4,6-Tribromophenol	91	40 - 139

# Analytical Data

Client: Weston Solutions, Inc.

Job Number: 680-37864-1

Client Sample ID: ESE-004

Lab Sample ID: 680-37864-6

Date Sampled: 06/19/2008 0945

Client Matrix: Water

Date Received: 06/20/2008 1315

---

## 8270C Semivolatile Compounds by Gas Chromatography/Mass Spectrometry (GC/MS)

Method:	8270C	Analysis Batch: 680-110447	Instrument ID:	GC/MS SemiVolatiles - N
Preparation:	3520C	Prep Batch: 680-109770	Lab File ID:	n0039.d
Dilution:	1.0		Initial Weight/Volume:	1060 mL
Date Analyzed:	06/26/2008 1925		Final Weight/Volume:	1 mL
Date Prepared:	06/24/2008 1432		Injection Volume:	1.0 uL

Analyte	Result (ug/L)	Qualifier	RL
Phenol	<9.4		9.4
2,4-Dimethylphenol	<9.4		9.4
Pentachlorophenol	<47		47

Surrogate	%Rec	Acceptance Limits
Phenol-d5	76	38 - 116
2-Fluorophenol	69	36 - 110
2,4,6-Tribromophenol	89	40 - 139

# Analytical Data

Client: Weston Solutions, Inc.

Job Number: 680-37864-1

Client Sample ID: ESE-007

Lab Sample ID: 680-37864-7

Date Sampled: 06/19/2008 1010

Client Matrix: Water

Date Received: 06/20/2008 1315

---

## 8270C Semivolatile Compounds by Gas Chromatography/Mass Spectrometry (GC/MS)

Method:	8270C	Analysis Batch: 680-110716	Instrument ID:	GC/MS SemiVolatiles - G
Preparation:	3520C	Prep Batch: 680-109770	Lab File ID:	g3046.d
Dilution:	20		Initial Weight/Volume:	1060 mL
Date Analyzed:	07/03/2008 1555		Final Weight/Volume:	1 mL
Date Prepared:	06/24/2008 1432		Injection Volume:	1.0 uL

Analyte	Result (ug/L)	Qualifier	RL
Phenol	2700		190
2,4-Dimethylphenol	500		190
Pentachlorophenol	<940		940

Surrogate	%Rec		Acceptance Limits
Phenol-d5	0	D	38 - 116
2-Fluorophenol	0	D	36 - 110
2,4,6-Tribromophenol	0	D	40 - 139



# Analytical Data

Client: Weston Solutions, Inc.

Job Number: 680-37864-1

Client Sample ID: WMW-17E

Lab Sample ID: 680-37864-8

Date Sampled: 06/19/2008 1150

Client Matrix: Water

Date Received: 06/20/2008 1315

---

## 8270C Semivolatile Compounds by Gas Chromatography/Mass Spectrometry (GC/MS)

Method:	8270C	Analysis Batch: 680-110447	Instrument ID:	GC/MS SemiVolatiles - N
Preparation:	3520C	Prep Batch: 680-109770	Lab File ID:	n0041.d
Dilution:	1.0		Initial Weight/Volume:	1030 mL
Date Analyzed:	06/26/2008 2012		Final Weight/Volume:	1 mL
Date Prepared:	06/24/2008 1432		Injection Volume:	1.0 uL

Analyte	Result (ug/L)	Qualifier	RL
Phenol	<9.7		9.7
2,4-Dimethylphenol	<9.7		9.7
Pentachlorophenol	<49		49

Surrogate	%Rec	Acceptance Limits
Phenol-d5	85	38 - 116
2-Fluorophenol	78	36 - 110
2,4,6-Tribromophenol	97	40 - 139

## Analytical Data

Client: Weston Solutions, Inc.

Job Number: 680-37864-1

Client Sample ID: WMW-18E

Lab Sample ID: 680-37864-9

Date Sampled: 06/19/2008 1215

Client Matrix: Water

Date Received: 06/20/2008 1315

---

### 8270C Semivolatile Compounds by Gas Chromatography/Mass Spectrometry (GC/MS)

Method:	8270C	Analysis Batch: 680-110447	Instrument ID:	GC/MS SemiVolatiles - N
Preparation:	3520C	Prep Batch: 680-109770	Lab File ID:	n0042.d
Dilution:	1.0		Initial Weight/Volume:	1060 mL
Date Analyzed:	06/26/2008 2035		Final Weight/Volume:	1 mL
Date Prepared:	06/24/2008 1432		Injection Volume:	1.0 uL

Analyte	Result (ug/L)	Qualifier	RL
Phenol	<9.4		9.4
2,4-Dimethylphenol	<9.4		9.4
Pentachlorophenol	<47		47

Surrogate	%Rec	Acceptance Limits
Phenol-d5	83	38 - 116
2-Fluorophenol	72	36 - 110
2,4,6-Tribromophenol	92	40 - 139

**Analytical Data**

Client: Weston Solutions, Inc.

Job Number: 680-37864-1

**Client Sample ID:        DUPLICATE**

Lab Sample ID:       680-37864-10FD

Date Sampled:       06/19/2008 0000

Client Matrix:       Water

Date Received:       06/20/2008 1315

---

**8270C Semivolatile Compounds by Gas Chromatography/Mass Spectrometry (GC/MS)**

Method:	8270C	Analysis Batch: 680-110447	Instrument ID:	GC/MS SemiVolatiles - N
Preparation:	3520C	Prep Batch: 680-109770	Lab File ID:	n0043.d
Dilution:	1.0		Initial Weight/Volume:	1060 mL
Date Analyzed:	06/26/2008 2058		Final Weight/Volume:	1 mL
Date Prepared:	06/24/2008 1432		Injection Volume:	1.0 uL

---

Analyte	Result (ug/L)	Qualifier	RL
Phenol	<9.4		9.4
2,4-Dimethylphenol	<9.4		9.4
Pentachlorophenol	<47		47

---

Surrogate	%Rec	Acceptance Limits
Phenol-d5	81	38 - 116
2-Fluorophenol	77	36 - 110
2,4,6-Tribromophenol	99	40 - 139



## Analytical Data

Client: Weston Solutions, Inc.

Job Number: 680-37864-1

**Client Sample ID:** ITW-1

Lab Sample ID: 680-37864-1

Date Sampled: 06/19/2008 0840

Client Matrix: Water

Date Received: 06/20/2008 1315

### 8310 Polynuclear Aromatic Hydrocarbons

Method:	8310	Analysis Batch: 400-71951	Instrument ID: HPLC/UV/FLUOR
Preparation:	3520C	Prep Batch: 400-71691	Lab File ID: 008-0801.D
Dilution:	1.0		Initial Weight/Volume: 1070 mL
Date Analyzed:	06/25/2008 2014		Final Weight/Volume: 1.0 mL
Date Prepared:	06/24/2008 1430		Injection Volume:

Analyte	Result (ug/L)	Qualifier	RL
Acenaphthene	<0.93		0.93
Acenaphthylene	<0.93		0.93
Anthracene	<0.93		0.93
Benzo[a]anthracene	<0.19		0.19
Benzo[a]pyrene	<0.19		0.19
Benzo[b]fluoranthene	<0.19		0.19
Benzo[g,h,i]perylene	<0.93		0.93
Benzo[k]fluoranthene	<0.47		0.47
Chrysene	<0.93		0.93
Dibenz(a,h)anthracene	<0.19		0.19
Fluoranthene	<0.93		0.93
Fluorene	<0.93		0.93
Indeno[1,2,3-cd]pyrene	<0.19		0.19
1-Methylnaphthalene	<0.93		0.93
2-Methylnaphthalene	<0.93		0.93
Naphthalene	<0.93		0.93
Phenanthrene	<0.93		0.93
Pyrene	<0.93		0.93
Surrogate	%Rec		Acceptance Limits
2-Chloroanthracene	50		43 - 151

**Analytical Data**

Client: Weston Solutions, Inc.

Job Number: 680-37864-1

**Client Sample ID: ITW-2**

Lab Sample ID: 680-37864-2

Date Sampled: 06/19/2008 0855

Client Matrix: Water

Date Received: 06/20/2008 1315

**8310 Polynuclear Aromatic Hydrocarbons**

Method:	8310	Analysis Batch: 400-71951	Instrument ID:	HPLC/UV/FLUOR
Preparation:	3520C	Prep Batch: 400-71691	Lab File ID:	009-0901.D
Dilution:	1.0		Initial Weight/Volume:	1080 mL
Date Analyzed:	06/25/2008 2048		Final Weight/Volume:	1.0 mL
Date Prepared:	06/24/2008 1430		Injection Volume:	

Analyte	Result (ug/L)	Qualifier	RL
Acenaphthene	<0.93		0.93
Acenaphthylene	<0.93		0.93
Anthracene	<0.93		0.93
Benzo[a]anthracene	<0.19		0.19
Benzo[a]pyrene	<0.19		0.19
Benzo[b]fluoranthene	<0.19		0.19
Benzo[g,h,i]perylene	<0.93		0.93
Benzo[k]fluoranthene	<0.46		0.46
Chrysene	<0.93		0.93
Dibenz(a,h)anthracene	<0.19		0.19
Fluoranthene	<0.93		0.93
Fluorene	<0.93		0.93
Indeno[1,2,3-cd]pyrene	<0.19		0.19
1-Methylnaphthalene	<0.93		0.93
2-Methylnaphthalene	<0.93		0.93
Naphthalene	<0.93		0.93
Phenanthrene	<0.93		0.93
Pyrene	<0.93		0.93
Surrogate	%Rec		Acceptance Limits
2-Chloroanthracene	68		43 - 151

## Analytical Data

Client: Weston Solutions, Inc.

Job Number: 680-37864-1

**Client Sample ID:** ITW-13

Lab Sample ID: 680-37864-3

Date Sampled: 06/19/2008 1050

Client Matrix: Water

Date Received: 06/20/2008 1315

### 8310 Polynuclear Aromatic Hydrocarbons

Method:	8310	Analysis Batch: 400-71951	Instrument ID: HPLC/UV/FLUOR
Preparation:	3520C	Prep Batch: 400-71691	Lab File ID: 010-1001.D
Dilution:	10		Initial Weight/Volume: 1080 mL
Date Analyzed:	06/25/2008 2121		Final Weight/Volume: 1.0 mL
Date Prepared:	06/24/2008 1430		Injection Volume:

Analyte	Result (ug/L)	Qualifier	RL
Acenaphthene	<9.3		9.3
Acenaphthylene	<9.3		9.3
Anthracene	<9.3		9.3
Benzo[a]anthracene	<1.9		1.9
Benzo[a]pyrene	<1.9		1.9
Benzo[b]fluoranthene	<1.9		1.9
Benzo[g,h,i]perylene	<9.3		9.3
Benzo[k]fluoranthene	<4.6		4.6
Chrysene	<9.3		9.3
Dibenz(a,h)anthracene	<1.9		1.9
Fluoranthene	<9.3		9.3
Fluorene	<9.3		9.3
Indeno[1,2,3-cd]pyrene	<1.9		1.9
1-Methylnaphthalene	<9.3		9.3
2-Methylnaphthalene	<9.3		9.3
Naphthalene	38		9.3
Phenanthrene	<9.3		9.3
Pyrene	<9.3		9.3
Surrogate	%Rec		Acceptance Limits
2-Chloroanthracene	114		43 - 151

## Analytical Data

Client: Weston Solutions, Inc.

Job Number: 680-37864-1

**Client Sample ID:** ITW-14

Lab Sample ID: 680-37864-4

Date Sampled: 06/19/2008 1130

Client Matrix: Water

Date Received: 06/20/2008 1315

### 8310 Polynuclear Aromatic Hydrocarbons

Method:	8310	Analysis Batch: 400-71951	Instrument ID: HPLC/UV/FLUOR
Preparation:	3520C	Prep Batch: 400-71691	Lab File ID: 011-1101.D
Dilution:	10		Initial Weight/Volume: 1080 mL
Date Analyzed:	06/25/2008 2155		Final Weight/Volume: 1.0 mL
Date Prepared:	06/24/2008 1430		Injection Volume:

Analyte	Result (ug/L)	Qualifier	RL
Acenaphthene	<9.3		9.3
Acenaphthylene	260		9.3
Anthracene	<9.3		9.3
Benzo[a]anthracene	<1.9		1.9
Benzo[a]pyrene	<1.9		1.9
Benzo[b]fluoranthene	13	P	1.9
Benzo[g,h,i]perylene	<9.3		9.3
Benzo[k]fluoranthene	<4.6		4.6
Chrysene	16	P	9.3
Dibenz(a,h)anthracene	<1.9		1.9
Fluoranthene	79	P	9.3
Fluorene	36	P	9.3
Indeno[1,2,3-cd]pyrene	<1.9		1.9
1-Methylnaphthalene	150		9.3
2-Methylnaphthalene	130	P	9.3
Naphthalene	260		9.3
Phenanthrene	15	P	9.3
Pyrene	<9.3		9.3
Surrogate	%Rec		Acceptance Limits
2-Chloroanthracene	403	X	43 - 151



## Analytical Data

Client: Weston Solutions, Inc.

Job Number: 680-37864-1

**Client Sample ID: ESE-002**

Lab Sample ID: 680-37864-5

Date Sampled: 06/19/2008 0915

Client Matrix: Water

Date Received: 06/20/2008 1315

### 8310 Polynuclear Aromatic Hydrocarbons

Method:	8310	Analysis Batch: 400-71951	Instrument ID: HPLC/UV/FLUOR
Preparation:	3520C	Prep Batch: 400-71691	Lab File ID: 012-1201.D
Dilution:	1.0		Initial Weight/Volume: 1080 mL
Date Analyzed:	06/25/2008 2229		Final Weight/Volume: 1.0 mL
Date Prepared:	06/24/2008 1430		Injection Volume:

Analyte	Result (ug/L)	Qualifier	RL
Acenaphthene	20		0.93
Acenaphthylene	<0.93		0.93
Anthracene	2.3	P	0.93
Benzo[a]anthracene	<0.19		0.19
Benzo[a]pyrene	<0.19		0.19
Benzo[b]fluoranthene	<0.19		0.19
Benzo[g,h,i]perylene	<0.93		0.93
Benzo[k]fluoranthene	<0.46		0.46
Chrysene	<0.93		0.93
Dibenz(a,h)anthracene	<0.19		0.19
Fluoranthene	9.1	P	0.93
Fluorene	11		0.93
Indeno[1,2,3-cd]pyrene	<0.19		0.19
1-Methylnaphthalene	2.4	P	0.93
2-Methylnaphthalene	11		0.93
Naphthalene	2.6		0.93
Phenanthrene	21		0.93
Pyrene	4.2		0.93
Surrogate	%Rec	Acceptance Limits	
2-Chloroanthracene	73	43 - 151	

## Analytical Data

Client: Weston Solutions, Inc.

Job Number: 680-37864-1

**Client Sample ID: ESE-004**

Lab Sample ID: 680-37864-6

Date Sampled: 06/19/2008 0945

Client Matrix: Water

Date Received: 06/20/2008 1315

### 8310 Polynuclear Aromatic Hydrocarbons

Method: 8310	Analysis Batch: 400-71951	Instrument ID: HPLC/UV/FLUOR
Preparation: 3520C	Prep Batch: 400-71691	Lab File ID: 013-1401.D
Dilution: 1.0		Initial Weight/Volume: 1080 mL
Date Analyzed: 06/25/2008 2336		Final Weight/Volume: 1.0 mL
Date Prepared: 06/24/2008 1430		Injection Volume:

Analyte	Result (ug/L)	Qualifier	RL
Acenaphthene	<0.93		0.93
Acenaphthylene	<0.93		0.93
Anthracene	<0.93		0.93
Benzo[a]anthracene	<0.19		0.19
Benzo[a]pyrene	<0.19		0.19
Benzo[b]fluoranthene	<0.19		0.19
Benzo[g,h,i]perylene	<0.93		0.93
Benzo[k]fluoranthene	<0.46		0.46
Chrysene	<0.93		0.93
Dibenz(a,h)anthracene	<0.19		0.19
Fluoranthene	<0.93		0.93
Fluorene	<0.93		0.93
Indeno[1,2,3-cd]pyrene	<0.19		0.19
1-Methylnaphthalene	<0.93		0.93
2-Methylnaphthalene	<0.93		0.93
Naphthalene	<0.93		0.93
Phenanthrene	<0.93		0.93
Pyrene	<0.93		0.93
Surrogate	%Rec		Acceptance Limits
2-Chloroanthracene	65		43 - 151

## Analytical Data

Client: Weston Solutions, Inc.

Job Number: 680-37864-1

**Client Sample ID: ESE-007**

Lab Sample ID: 680-37864-7

Date Sampled: 06/19/2008 1010

Client Matrix: Water

Date Received: 06/20/2008 1315

### 8310 Polynuclear Aromatic Hydrocarbons

Method: 8310	Analysis Batch: 400-71951	Instrument ID: HPLC/UV/FLUOR
Preparation: 3520C	Prep Batch: 400-71691	Lab File ID: 014-1501.D
Dilution: 1.0		Initial Weight/Volume: 1060 mL
Date Analyzed: 06/26/2008 0010		Final Weight/Volume: 1.0 mL
Date Prepared: 06/24/2008 1430		Injection Volume:

Analyte	Result (ug/L)	Qualifier	RL
Acenaphthene	<0.94		0.94
Acenaphthylene	<0.94		0.94
Anthracene	<0.94		0.94
Benzo[a]anthracene	<0.19		0.19
Benzo[a]pyrene	<0.19		0.19
Benzo[b]fluoranthene	<0.19		0.19
Benzo[g,h,i]perylene	<0.94		0.94
Benzo[k]fluoranthene	<0.47		0.47
Chrysene	<0.94		0.94
Dibenz(a,h)anthracene	<0.19		0.19
Fluoranthene	<0.94		0.94
Fluorene	<0.94		0.94
Indeno[1,2,3-cd]pyrene	<0.19		0.19
1-Methylnaphthalene	1.9		0.94
2-Methylnaphthalene	1.4		0.94
Naphthalene	7.5		0.94
Phenanthrene	<0.94		0.94
Pyrene	<0.94		0.94
Surrogate	%Rec		Acceptance Limits
2-Chloroanthracene	50		43 - 151

**Analytical Data**

Client: Weston Solutions, Inc.

Job Number: 680-37864-1

**Client Sample ID: WMW-17E**

Lab Sample ID: 680-37864-8

Date Sampled: 06/19/2008 1150

Client Matrix: Water

Date Received: 06/20/2008 1315

**8310 Polynuclear Aromatic Hydrocarbons**

Method:	8310	Analysis Batch: 400-71951	Instrument ID:	HPLC/UV/FLUOR
Preparation:	3520C	Prep Batch: 400-71691	Lab File ID:	015-1601.D
Dilution:	1.0		Initial Weight/Volume:	1080 mL
Date Analyzed:	06/26/2008 0044		Final Weight/Volume:	1.0 mL
Date Prepared:	06/24/2008 1430		Injection Volume:	

Analyte	Result (ug/L)	Qualifier	RL
Acenaphthene	<0.93		0.93
Acenaphthylene	<0.93		0.93
Anthracene	<0.93		0.93
Benzo[a]anthracene	<0.19		0.19
Benzo[a]pyrene	<0.19		0.19
Benzo[b]fluoranthene	<0.19		0.19
Benzo[g,h,i]perylene	<0.93		0.93
Benzo[k]fluoranthene	<0.46		0.46
Chrysene	<0.93		0.93
Dibenz(a,h)anthracene	<0.19		0.19
Fluoranthene	<0.93		0.93
Fluorene	<0.93		0.93
Indeno[1,2,3-cd]pyrene	<0.19		0.19
1-Methylnaphthalene	2.0		0.93
2-Methylnaphthalene	<0.93		0.93
Naphthalene	2.5		0.93
Phenanthrene	<0.93		0.93
Pyrene	<0.93		0.93
Surrogate	%Rec		Acceptance Limits
2-Chloroanthracene	59		43 - 151

## Analytical Data

Client: Weston Solutions, Inc.

Job Number: 680-37864-1

**Client Sample ID:** WMW-18E

Lab Sample ID: 680-37864-9

Date Sampled: 06/19/2008 1215

Client Matrix: Water

Date Received: 06/20/2008 1315

### 8310 Polynuclear Aromatic Hydrocarbons

Method:	8310	Analysis Batch: 400-71951	Instrument ID: HPLC/UV/FLUOR
Preparation:	3520C	Prep Batch: 400-71691	Lab File ID: 016-1701.D
Dilution:	1.0		Initial Weight/Volume: 1080 mL
Date Analyzed:	06/26/2008 0117		Final Weight/Volume: 1.0 mL
Date Prepared:	06/24/2008 1430		Injection Volume:

Analyte	Result (ug/L)	Qualifier	RL
Acenaphthene	<0.93		0.93
Acenaphthylene	<0.93		0.93
Anthracene	<0.93		0.93
Benzo[a]anthracene	<0.19		0.19
Benzo[a]pyrene	<0.19		0.19
Benzo[b]fluoranthene	<0.19		0.19
Benzo[g,h,i]perylene	<0.93		0.93
Benzo[k]fluoranthene	<0.46		0.46
Chrysene	<0.93		0.93
Dibenz(a,h)anthracene	<0.19		0.19
Fluoranthene	<0.93		0.93
Fluorene	<0.93		0.93
Indeno[1,2,3-cd]pyrene	<0.19		0.19
1-Methylnaphthalene	<0.93		0.93
2-Methylnaphthalene	<0.93		0.93
Naphthalene	<0.93		0.93
Phenanthrene	<0.93		0.93
Pyrene	<0.93		0.93
Surrogate	%Rec	Acceptance Limits	
2-Chloroanthracene	51	43 - 151	

## Analytical Data

Client: Weston Solutions, Inc.

Job Number: 680-37864-1

**Client Sample ID:       DUPLICATE**

Lab Sample ID:       680-37864-10FD  
 Client Matrix:       Water

Date Sampled:       06/19/2008 0000  
 Date Received:      06/20/2008 1315

### 8310 Polynuclear Aromatic Hydrocarbons

Method:	8310	Analysis Batch: 400-71951	Instrument ID:    HPLC/UV/FLUOR
Preparation:	3520C	Prep Batch: 400-71691	Lab File ID:     017-1801.D
Dilution:	1.0		Initial Weight/Volume:   1080 mL
Date Analyzed:	06/26/2008 0151		Final Weight/Volume:    1.0 mL
Date Prepared:	06/24/2008 1430		Injection Volume:

Analyte	Result (ug/L)	Qualifier	RL
Acenaphthene	<0.93		0.93
Acenaphthylene	<0.93		0.93
Anthracene	<0.93		0.93
Benzo[a]anthracene	<0.19		0.19
Benzo[a]pyrene	<0.19		0.19
Benzo[b]fluoranthene	<0.19		0.19
Benzo[g,h,i]perylene	<0.93		0.93
Benzo[k]fluoranthene	<0.46		0.46
Chrysene	<0.93		0.93
Dibenz(a,h)anthracene	<0.19		0.19
Fluoranthene	<0.93		0.93
Fluorene	<0.93		0.93
Indeno[1,2,3-cd]pyrene	<0.19		0.19
1-Methylnaphthalene	<0.93		0.93
2-Methylnaphthalene	<0.93		0.93
Naphthalene	<0.93		0.93
Phenanthrene	<0.93		0.93
Pyrene	<0.93		0.93
Surrogate	%Rec		Acceptance Limits
2-Chloroanthracene	49		43 - 151

## Analytical Data

Client: Weston Solutions, Inc.

Job Number: 680-37864-1

**Client Sample ID: EQUIPMENT BLANK**

Lab Sample ID: 680-37864-11EB  
 Client Matrix: Water

Date Sampled: 06/19/2008 1110  
 Date Received: 06/20/2008 1315

### 8310 Polynuclear Aromatic Hydrocarbons

Method:	8310	Analysis Batch: 400-71951	Instrument ID: HPLC/UV/FLUOR
Preparation:	3520C	Prep Batch: 400-71691	Lab File ID: 018-1901.D
Dilution:	1.0		Initial Weight/Volume: 1080 mL
Date Analyzed:	06/26/2008 0225		Final Weight/Volume: 1.0 mL
Date Prepared:	06/24/2008 1430		Injection Volume:

Analyte	Result (ug/L)	Qualifier	RL
Acenaphthene	<0.93		0.93
Acenaphthylene	<0.93		0.93
Anthracene	<0.93		0.93
Benzo[a]anthracene	<0.19		0.19
Benzo[a]pyrene	<0.19		0.19
Benzo[b]fluoranthene	<0.19		0.19
Benzo[g,h,i]perylene	<0.93		0.93
Benzo[k]fluoranthene	<0.46		0.46
Chrysene	<0.93		0.93
Dibenz(a,h)anthracene	<0.19		0.19
Fluoranthene	<0.93		0.93
Fluorene	<0.93		0.93
Indeno[1,2,3-cd]pyrene	<0.19		0.19
1-Methylnaphthalene	<0.93		0.93
2-Methylnaphthalene	<0.93		0.93
Naphthalene	<0.93		0.93
Phenanthrene	<0.93		0.93
Pyrene	<0.93		0.93
Surrogate	%Rec	Acceptance Limits	
2-Chloroanthracene	100	43 - 151	

**Analytical Data**

Client: Weston Solutions, Inc.

Job Number: 680-37864-1

**Client Sample ID: ITW-1**

Lab Sample ID: 680-37864-1

Date Sampled: 06/19/2008 0840

Client Matrix: Water

Date Received: 06/20/2008 1315

---

**6010B Inductively Coupled Plasma - Atomic Emission Spectrometry-Total Recoverable**

Method:	6010B	Analysis Batch: 680-110038	Instrument ID:	ICP/AES - D
Preparation:	3005A	Prep Batch: 680-109797	Lab File ID:	N/A
Dilution:	1.0		Initial Weight/Volume:	50 mL
Date Analyzed:	06/26/2008 0322		Final Weight/Volume:	50 mL
Date Prepared:	06/24/2008 1130			

---

Analyte	Result (ug/L)	Qualifier	RL
Arsenic	<10		10
Chromium	<10		10



**Analytical Data**

Client: Weston Solutions, Inc.

Job Number: 680-37864-1

**Client Sample ID: ITW-2**

Lab Sample ID: 680-37864-2  
Client Matrix: Water

Date Sampled: 06/19/2008 0855  
Date Received: 06/20/2008 1315

---

**6010B Inductively Coupled Plasma - Atomic Emission Spectrometry-Total Recoverable**

Method: 6010B                              Analysis Batch: 680-110038                              Instrument ID: ICP/AES - D  
Preparation: 3005A                              Prep Batch: 680-109797                              Lab File ID: N/A  
Dilution: 1.0    Initial Weight/Volume: 50 mL  
Date Analyzed: 06/26/2008 0359                              Final Weight/Volume: 50 mL  
Date Prepared: 06/24/2008 1130

---

Analyte	Result (ug/L)	Qualifier	RL
Arsenic	<10		10
Chromium	<10		10

---

**Analytical Data**

Client: Weston Solutions, Inc.

Job Number: 680-37864-1

**Client Sample ID: ITW-13**

Lab Sample ID: 680-37864-3  
Client Matrix: Water

Date Sampled: 06/19/2008 1050  
Date Received: 06/20/2008 1315

---

**6010B Inductively Coupled Plasma - Atomic Emission Spectrometry-Total Recoverable**

Method:	6010B	Analysis Batch: 680-110038	Instrument ID:	ICP/AES - D
Preparation:	3005A	Prep Batch: 680-109797	Lab File ID:	N/A
Dilution:	1.0		Initial Weight/Volume:	50 mL
Date Analyzed:	06/26/2008 0404		Final Weight/Volume:	50 mL
Date Prepared:	06/24/2008 1130			

---

Analyte	Result (ug/L)	Qualifier	RL
Arsenic	10		10
Chromium	<10		10

**Analytical Data**

Client: Weston Solutions, Inc.

Job Number: 680-37864-1

**Client Sample ID: ITW-14**

Lab Sample ID: 680-37864-4  
Client Matrix: Water

Date Sampled: 06/19/2008 1130  
Date Received: 06/20/2008 1315

---

**6010B Inductively Coupled Plasma - Atomic Emission Spectrometry-Total Recoverable**

Method:	6010B	Analysis Batch: 680-110038	Instrument ID:	ICP/AES - D
Preparation:	3005A	Prep Batch: 680-109797	Lab File ID:	N/A
Dilution:	1.0		Initial Weight/Volume:	50 mL
Date Analyzed:	06/26/2008 0409		Final Weight/Volume:	50 mL
Date Prepared:	06/24/2008 1130			

---

Analyte	Result (ug/L)	Qualifier	RL
Arsenic	<10		10
Chromium	<10		10

**Analytical Data**

Client: Weston Solutions, Inc.

Job Number: 680-37864-1

**Client Sample ID: ESE-002**

Lab Sample ID: 680-37864-5  
Client Matrix: Water

Date Sampled: 06/19/2008 0915  
Date Received: 06/20/2008 1315

---

**6010B Inductively Coupled Plasma - Atomic Emission Spectrometry-Total Recoverable**

Method:	6010B	Analysis Batch: 680-110038	Instrument ID:	ICP/AES - D
Preparation:	3005A	Prep Batch: 680-109797	Lab File ID:	N/A
Dilution:	1.0		Initial Weight/Volume:	50 mL
Date Analyzed:	06/26/2008 0415		Final Weight/Volume:	50 mL
Date Prepared:	06/24/2008 1130			

---

Analyte	Result (ug/L)	Qualifier	RL
Arsenic	<10		10
Chromium	<10		10



**Analytical Data**

Client: Weston Solutions, Inc.

Job Number: 680-37864-1

**Client Sample ID: ESE-007**

Lab Sample ID: 680-37864-7  
Client Matrix: Water

Date Sampled: 06/19/2008 1010  
Date Received: 06/20/2008 1315

---

**6010B Inductively Coupled Plasma - Atomic Emission Spectrometry-Total Recoverable**

Method:	6010B	Analysis Batch: 680-110038	Instrument ID:	ICP/AES - D
Preparation:	3005A	Prep Batch: 680-109797	Lab File ID:	N/A
Dilution:	1.0		Initial Weight/Volume:	50 mL
Date Analyzed:	06/26/2008 0425		Final Weight/Volume:	50 mL
Date Prepared:	06/24/2008 1130			

---

Analyte	Result (ug/L)	Qualifier	RL
Arsenic	<10		10
Chromium	<10		10

### Analytical Data

Client: Weston Solutions, Inc.

Job Number: 680-37864-1

Client Sample ID: **WMW-17E**

Lab Sample ID: 680-37864-8  
Client Matrix: Water

Date Sampled: 06/19/2008 1150  
Date Received: 06/20/2008 1315

---

**6010B Inductively Coupled Plasma - Atomic Emission Spectrometry-Total Recoverable**

Method: 6010B                      Analysis Batch: 680-110038                      Instrument ID:                      ICP/AES - D  
Preparation: 3005A                      Prep Batch: 680-109797                      Lab File ID:                      N/A  
Dilution: 1.0                      Initial Weight/Volume: 50 mL  
Date Analyzed: 06/26/2008 0430                      Final Weight/Volume: 50 mL  
Date Prepared: 06/24/2008 1130

---

Analyte	Result (ug/L)	Qualifier	RL
Arsenic	<10		10
Chromium	<10		10

**Analytical Data**

Client: Weston Solutions, Inc.

Job Number: 680-37864-1

**Client Sample ID: WMW-18E**

Lab Sample ID: 680-37864-9  
Client Matrix: Water

Date Sampled: 06/19/2008 1215  
Date Received: 06/20/2008 1315

---

**6010B Inductively Coupled Plasma - Atomic Emission Spectrometry-Total Recoverable**

Method:	6010B	Analysis Batch: 680-110038	Instrument ID:	ICP/AES - D
Preparation:	3005A	Prep Batch: 680-109797	Lab File ID:	N/A
Dilution:	1.0		Initial Weight/Volume:	50 mL
Date Analyzed:	06/26/2008 0436		Final Weight/Volume:	50 mL
Date Prepared:	06/24/2008 1130			

---

Analyte	Result (ug/L)	Qualifier	RL
Arsenic	<10		10
Chromium	<10		10



**Analytical Data**

Client: Weston Solutions, Inc.

Job Number: 680-37864-1

**Client Sample ID: DUPLICATE**

Lab Sample ID: 680-37864-10FD  
Client Matrix: Water

Date Sampled: 06/19/2008 0000  
Date Received: 06/20/2008 1315

---

**6010B Inductively Coupled Plasma - Atomic Emission Spectrometry-Total Recoverable**

Method:	6010B	Analysis Batch: 680-110038	Instrument ID:	ICP/AES - D
Preparation:	3005A	Prep Batch: 680-109797	Lab File ID:	N/A
Dilution:	1.0		Initial Weight/Volume:	50 mL
Date Analyzed:	06/26/2008 0441		Final Weight/Volume:	50 mL
Date Prepared:	06/24/2008 1130			

---

Analyte	Result (ug/L)	Qualifier	RL
Arsenic	<10		10
Chromium	<10		10



## DATA REPORTING QUALIFIERS

Client: Weston Solutions, Inc.

Job Number: 680-37864-1

<b>Lab Section</b>	<b>Qualifier</b>	<b>Description</b>
GC/MS Semi VOA		
	D	Surrogate or matrix spike recoveries were not obtained because the extract was diluted for analysis; also compounds analyzed at a dilution may be flagged with a D.
HPLC		
	X	Surrogate exceeds the control limits
	P	The lower of the two values is reported when the % difference between the results of two GC columns is greater than 40%

## Quality Control Results

Client: Weston Solutions, Inc.

Job Number: 680-37864-1

**Method Blank - Batch: 680-110631**

**Method: 8260B**  
**Preparation: 5030B**

Lab Sample ID: MB 680-110631/6  
Client Matrix: Water  
Dilution: 1.0  
Date Analyzed: 07/02/2008 2323  
Date Prepared: 07/02/2008 2323

Analysis Batch: 680-110631  
Prep Batch: N/A  
Units: ug/L

Instrument ID: GC/MS Volatiles - A  
Lab File ID: aq611.d  
Initial Weight/Volume: 5 mL  
Final Weight/Volume: 5 mL

Analyte	Result	Qual	RL
Benzene	<1.0		1.0
Ethylbenzene	<1.0		1.0
Methyl tert-butyl ether	<10		10
Toluene	<1.0		1.0
Xylenes, Total	<2.0		2.0
<hr/>			
Surrogate	% Rec	Acceptance Limits	
4-Bromofluorobenzene	99	75 - 120	
Dibromofluoromethane	104	75 - 121	
Toluene-d8 (Surr)	91	75 - 120	

**Lab Control Spike - Batch: 680-110631**

**Method: 8260B**  
**Preparation: 5030B**

Lab Sample ID: LCS 680-110631/5  
Client Matrix: Water  
Dilution: 1.0  
Date Analyzed: 07/02/2008 2218  
Date Prepared: 07/02/2008 2218

Analysis Batch: 680-110631  
Prep Batch: N/A  
Units: ug/L

Instrument ID: GC/MS Volatiles - A  
Lab File ID: aq609.d  
Initial Weight/Volume: 5 mL  
Final Weight/Volume: 5 mL

Analyte	Spike Amount	Result	% Rec.	Limit	Qual
Benzene	50.0	48.2	96	77 - 119	
Ethylbenzene	50.0	52.2	104	86 - 116	
Methyl tert-butyl ether	100	91.0	91	77 - 121	
Toluene	50.0	52.4	105	81 - 117	
Xylenes, Total	150	167	112	84 - 118	
<hr/>					
Surrogate	% Rec	Acceptance Limits			
4-Bromofluorobenzene	109	75 - 120			
Dibromofluoromethane	111	75 - 121			
Toluene-d8 (Surr)	104	75 - 120			

Calculations are performed before rounding to avoid round-off errors in calculated results.

## Quality Control Results

Client: Weston Solutions, Inc.

Job Number: 680-37864-1

**Method Blank - Batch: 680-109770**

Lab Sample ID: MB 680-109770/18-A  
 Client Matrix: Water  
 Dilution: 1.0  
 Date Analyzed: 06/26/2008 1507  
 Date Prepared: 06/24/2008 1432

Analysis Batch: 680-110447  
 Prep Batch: 680-109770  
 Units: ug/L

**Method: 8270C  
 Preparation: 3520C**

Instrument ID: GC/MS SemiVolatiles - N  
 Lab File ID: n0028.d  
 Initial Weight/Volume: 1000 mL  
 Final Weight/Volume: 1 mL  
 Injection Volume: 1.0 uL

Analyte	Result	Qual	RL
Phenol	<10		10
2,4-Dimethylphenol	<10		10
Pentachlorophenol	<50		50

Surrogate	% Rec	Acceptance Limits
Phenol-d5	76	38 - 116
2-Fluorophenol	69	36 - 110
2,4,6-Tribromophenol	87	40 - 139

**Lab Control Spike - Batch: 680-109770**

Lab Sample ID: LCS 680-109770/19-A  
 Client Matrix: Water  
 Dilution: 1.0  
 Date Analyzed: 06/26/2008 2208  
 Date Prepared: 06/24/2008 1432

Analysis Batch: 680-110447  
 Prep Batch: 680-109770  
 Units: ug/L

**Method: 8270C  
 Preparation: 3520C**

Instrument ID: GC/MS SemiVolatiles - N  
 Lab File ID: n0046.d  
 Initial Weight/Volume: 1000 mL  
 Final Weight/Volume: 1 mL  
 Injection Volume: 1.0 uL

Analyte	Spike Amount	Result	% Rec.	Limit	Qual
Phenol	100	80.3	80	39 - 110	
2,4-Dimethylphenol	100	72.0	72	36 - 110	
Pentachlorophenol	100	87.8	88	37 - 132	

Surrogate	% Rec	Acceptance Limits
Phenol-d5	86	38 - 116
2-Fluorophenol	78	36 - 110
2,4,6-Tribromophenol	97	40 - 139

Calculations are performed before rounding to avoid round-off errors in calculated results.

## Quality Control Results

Client: Weston Solutions, Inc.

Job Number: 680-37864-1

**Method Blank - Batch: 400-71691**

**Method: 8310**

**Preparation: 3520C**

Lab Sample ID: MB 400-71691/3-A  
 Client Matrix: Water  
 Dilution: 1.0  
 Date Analyzed: 06/25/2008 1907  
 Date Prepared: 06/24/2008 0757

Analysis Batch: 400-71951  
 Prep Batch: 400-71691  
 Units: ug/L

Instrument ID: HPLC/UV/FLUOR  
 Lab File ID: 006-0601.D  
 Initial Weight/Volume: 1000 mL  
 Final Weight/Volume: 1.0 mL  
 Injection Volume:  
 Column ID: PRIMARY

Analyte	Result	Qual	RL
Acenaphthene	<1.0		1.0
Acenaphthylene	<1.0		1.0
Anthracene	<1.0		1.0
Benzo[a]anthracene	<0.20		0.20
Benzo[a]pyrene	<0.20		0.20
Benzo[b]fluoranthene	<0.20		0.20
Benzo[g,h,i]perylene	<1.0		1.0
Benzo[k]fluoranthene	<0.50		0.50
Chrysene	<1.0		1.0
Dibenz(a,h)anthracene	<0.20		0.20
Fluoranthene	<1.0		1.0
Fluorene	<1.0		1.0
Indeno[1,2,3-cd]pyrene	<0.20		0.20
1-Methylnaphthalene	<1.0		1.0
2-Methylnaphthalene	<1.0		1.0
Naphthalene	<1.0		1.0
Phenanthrene	<1.0		1.0
Pyrene	<1.0		1.0
Surrogate	% Rec		Acceptance Limits
2-Chloroanthracene	88		43 - 151

Calculations are performed before rounding to avoid round-off errors in calculated results.

## Quality Control Results

Client: Weston Solutions, Inc.

Job Number: 680-37864-1

**Lab Control Spike - Batch: 400-71691**

**Method: 8310**

**Preparation: 3520C**

Lab Sample ID: LCS 400-71691/2-A  
 Client Matrix: Water  
 Dilution: 1.0  
 Date Analyzed: 06/25/2008 1940  
 Date Prepared: 06/24/2008 0757

Analysis Batch: 400-71951  
 Prep Batch: 400-71691  
 Units: ug/L

Instrument ID: HPLC/UV/FLUOR  
 Lab File ID: 007-0701.D  
 Initial Weight/Volume: 1000 mL  
 Final Weight/Volume: 1.0 mL  
 Injection Volume:  
 Column ID: PRIMARY

Analyte	Spike Amount	Result	% Rec.	Limit	Qual
Acenaphthene	10.0	9.08	91	31 - 109	
Acenaphthylene	10.0	7.84	78	39 - 105	
Anthracene	10.0	8.84	88	43 - 121	
Benzo[a]anthracene	10.0	7.75	78	60 - 124	
Benzo[a]pyrene	10.0	7.20	72	41 - 128	
Benzo[b]fluoranthene	10.0	6.62	66	48 - 116	
Benzo[g,h,i]perylene	10.0	5.42	54	17 - 138	
Benzo[k]fluoranthene	10.0	6.24	62	35 - 120	
Chrysene	10.0	8.15	81	54 - 120	
Dibenz(a,h)anthracene	10.0	5.35	54	13 - 134	
Fluoranthene	10.0	8.98	90	55 - 138	
Fluorene	10.0	8.95	90	41 - 112	
Indeno[1,2,3-cd]pyrene	10.0	5.81	58	31 - 130	
1-Methylnaphthalene	10.0	8.94	89	32 - 96	
2-Methylnaphthalene	10.0	8.87	89	34 - 97	
Naphthalene	10.0	8.87	89	19 - 135	
Phenanthrene	10.0	9.14	91	45 - 117	
Pyrene	10.0	9.09	91	61 - 127	
Surrogate			% Rec	Acceptance Limits	
2-Chloroanthracene			99	43 - 151	

Calculations are performed before rounding to avoid round-off errors in calculated results.

## Quality Control Results

Client: Weston Solutions, Inc.

Job Number: 680-37864-1

**Method Blank - Batch: 680-109797**

Lab Sample ID: MB 680-109797/15-A  
 Client Matrix: Water  
 Dilution: 1.0  
 Date Analyzed: 06/26/2008 0256  
 Date Prepared: 06/24/2008 1130

Analysis Batch: 680-110038  
 Prep Batch: 680-109797  
 Units: ug/L

**Method: 6010B  
 Preparation: 3005A  
 Total Recoverable**

Instrument ID: ICP/AES - D  
 Lab File ID: N/A  
 Initial Weight/Volume: 50 mL  
 Final Weight/Volume: 50 mL

Analyte	Result	Qual	RL
Arsenic	<10		10
Chromium	<10		10

**Lab Control Spike - Batch: 680-109797**

Lab Sample ID: LCS 680-109797/16-A  
 Client Matrix: Water  
 Dilution: 1.0  
 Date Analyzed: 06/26/2008 0301  
 Date Prepared: 06/24/2008 1130

Analysis Batch: 680-110038  
 Prep Batch: 680-109797  
 Units: ug/L

**Method: 6010B  
 Preparation: 3005A  
 Total Recoverable**

Instrument ID: ICP/AES - D  
 Lab File ID: N/A  
 Initial Weight/Volume: 50 mL  
 Final Weight/Volume: 50 mL

Analyte	Spike Amount	Result	% Rec.	Limit	Qual
Arsenic	2000	2050	103	75 - 125	
Chromium	200	209	104	75 - 125	

Calculations are performed before rounding to avoid round-off errors in calculated results.



## Quality Control Results

Client: Weston Solutions, Inc.

Job Number: 680-37864-1

### Matrix Spike/

### Matrix Spike Duplicate Recovery Report - Batch: 680-109797

Method: 6010B

Preparation: 3005A

Total Recoverable

MS Lab Sample ID: 680-37864-1  
Client Matrix: Water  
Dilution: 1.0  
Date Analyzed: 06/26/2008 0338  
Date Prepared: 06/24/2008 1130

Analysis Batch: 680-110038  
Prep Batch: 680-109797

Instrument ID: ICP/AES - D  
Lab File ID: N/A  
Initial Weight/Volume: 50 mL  
Final Weight/Volume: 50 mL

MSD Lab Sample ID: 680-37864-1  
Client Matrix: Water  
Dilution: 1.0  
Date Analyzed: 06/26/2008 0343  
Date Prepared: 06/24/2008 1130

Analysis Batch: 680-110038  
Prep Batch: 680-109797

Instrument ID: ICP/AES - D  
Lab File ID: N/A  
Initial Weight/Volume: 50 mL  
Final Weight/Volume: 50 mL

Analyte	% Rec.		Limit	RPD	RPD Limit	MS Qual	MSD Qual
	MS	MSD					
Arsenic	106	103	75 - 125	2	20		
Chromium	107	105	75 - 125	2	20		

Calculations are performed before rounding to avoid round-off errors in calculated results.

5102 LaRoche Avenue  
Savannah, GA 31404  
Phone (912) 354-7858 Fax (912) 352-0165

Client Information

Client Contact: Mr. Ralph Mckeen  
Company: Weston Solutions, Inc.  
Address: 5430 Metric Place Suite 100  
City: Norcross  
State, Zip: GA, 30092  
Phone: 286-462-2444  
Email: ralph.mckeen@westonsolutions.com  
Project Name: Cabot Quarterly Sampling  
Site: CAGST/Kooppers  
Sample ID: 05791.008.001.0001

Sampler: BRANT McCRAWLES  
Phone: 770.325.7938  
Page: Abbie  
E-Mail: abbie.page@testamericainc.com

Lab P/N: \_\_\_\_\_  
Carrier Tracking No(s): \_\_\_\_\_

COC No: 680-16690\_1  
Page: Page 1 of 2  
Job #: \_\_\_\_\_

Analysis Requested

Due Date Requested: NORMAL  
TAT Requested (days): \_\_\_\_\_  
NORMA L

Field Filtered Sample (Yes or No)  
Perform MS/MSD (Yes or No)

6010B - As, Cr  
8021B - BTEX, MtBE  
8270C - Select SVOCs  
8310 - PAH's  
8021B - BTEX, MtBE

Preservation Codes:  
A - HCL  
B - NaOH  
C - Zn Acetate  
D - Nitric Acid  
E - NaHSO4  
F - MeOH  
G - Anionizer  
H - Ascorbic Acid  
I - Ice  
J - DI Water  
K - EDTA  
L - EDA  
M - Hexane  
N - None  
O - AshNaO2  
P - Na2CO3  
Q - Na2SO3  
R - Na2S2O3  
S - H2SO4  
T - TSP Dodecahydrate  
U - Acetone  
V - MCAA  
W - pH 4-5  
Z - other (specify)

Sample Identification	Sample Date	Sample Time	Sample Type (G=Comp, G=grab)	Matrix (W=Water, S=solid, O=metal, P=Plastic, A=Air)	Preservation Code	D	A	N	N	A	Total Number of containers	Special Instructions/Note:
ITW-1	6/19	0840	G	Water		X	X	X	X	X		
ITW-2	6/19	0855	G	Water		X	X	X	X	X		
ITW-13	6/19	1050	G	Water		X	X	X	X	X		POSSIBLE RESIDUE (HIT)
ITW-14	6/19	1130	G	Water		X	X	X	X	X		
ESE-002	6/19	0915	G	Water		X	X	X	X	X		
ESE-004	6/19	0945	G	Water		X	X	X	X	X		
ESE-007	6/19	1010	G	Water		X	X	X	X	X		
WMW-17E	6/19	1150	G	Water		X	X	X	X	X		
WMW-18E	6/19	1215	G	Water		X	X	X	X	X		
Duplicate	6/19	---	G	Water		X	X	X	X	X		
Equipment Blank	6/19	1110	G	Water		X	X	X	X	X		

Possible Hazard Identification

Non-Hazard  Flammable  Skin Irritant  Poison B  Unknown  Radiological  
Deliverable Requested: I, II, III, IV, Other (specify)

Sample Disposal (A fee may be assessed if samples are retained longer than 1 month)  
 Return To Client  Disposal By Lab  Archive For \_\_\_\_\_ Months

Special Instructions/QC Requirements:

Method of Shipment: \_\_\_\_\_  
Date: \_\_\_\_\_

Empty Kit Relinquished by:

Relinquished by: *Brant McCrawles*  
Date/Time: 6/20/08 1315  
Company: WESTON

Received by: *AK*  
Date/Time: 6/20/08 1315  
Company: THS&W

Relinquished by: \_\_\_\_\_  
Date/Time: \_\_\_\_\_  
Company: \_\_\_\_\_

Received by: \_\_\_\_\_  
Date/Time: \_\_\_\_\_  
Company: \_\_\_\_\_

Relinquished by:

Custody Seals Intact:  Yes  No  
Custody Seal No.: \_\_\_\_\_

Cooler Temperature(s) °C and Other Remarks:

Date: \_\_\_\_\_

Date: \_\_\_\_\_

**TestAmerica Savannah**  
 5102 LaRoche Avenue  
 Savannah, GA 31404  
 Phone (912) 354-7858 Fax (912) 352-0165

**Chain of Custody Record**

**TestAmerica**  
 THE LEADER IN ENVIRONMENTAL TESTING

**Client Information**  
 Client Contact: Mr. Ralph McKeen  
 Company: Western Solutions, Inc.  
 Address: 5430 Metric Place Suite 100  
 City: Norcross  
 State, Zip: GA, 30092  
 Phone: 386-462-2444 (404) 770-325-7988  
 Email: ralph.mckeen@westonsolutions.com  
 Project Name: Cabot Quarterly Sampling  
 Site:   
 Due Date Requested:   
 TAT Requested (days): **NORMAL**  
 Lab Bill: **524 NT MCKEEN WEST**  
 Page: **Abbie**  
 E-Mail: **abbie.page@testamericainc.com**  
 Carrier Tracking No(s):   
 Job #:   
 DOC No: **680-16890.2**  
 Page: **Page 2 of 2**

**Analysis Requested**

Field Filtered Sample (Yes or No)	Perform MS/MSD (Yes or No)	6010B - As, Cr	8021B - BTEX, MIBE	8270C - Select SVOCs	8310 - PAH's	8021B - BTEX, MIBE

**Preservation Codes:**  
 A - HCL  
 B - NaOH  
 C - Zn Acetate  
 D - AsH2O2  
 E - Nitric Acid  
 F - NaHSO4  
 G - MDOH  
 H - Ascorbic Acid  
 I - Ice  
 J - DI Water  
 K - EDTA  
 L - FDA  
 M - Hexane  
 N - None  
 O - AsH2O2  
 P - Na2OAS  
 Q - Na2SO3  
 R - Na2S2O3  
 S - H2SO4  
 T - TSP Dodecylhydrate  
 U - Acetone  
 V - MCAA  
 W - pH 4.5  
 Z - other (specify)

05791.008-001,0001

Sample Identification	Sample Date	Sample Time	Sample Type (C=Comp, G=grab)	Matrix (Synthetic, Sealed, On-Wasted, BT=Tissue, AA=AU)	Field Filtered Sample (Yes or No)	Perform MS/MSD (Yes or No)	Total Number of containers	Special Instructions/Note:
TB-01 JB-02 ALL VOLS IN ONE GOLDER ONLY REALLY NEG D1+B?				Water		X		
				Water				
				Water				
				Water				

**Possible Hazard Identification**  
 Non-Hazard  Flammable  Skin Irritant  Poison B  Unknown  Radiological  
 Deliverable Requested: I, II, III, IV, Other (specify)   
 Empty Kit Relinquished by:   
 Relinquished by: **Ralph McKeen** Date: **6/20/08** Time: **1315** Company: **WESTON**  
 Relinquished by: **Ks** Date: **6/20/08** Time: **1315** Company: **TRSW**  
 Custody Seals Intact:  Yes  No Custody Seal No.:   
 Cooler Temperature(s) °C and Other Remarks:   
 Method of Shipment: **680-378109** Archive For **Months**

**APPENDIX C**

**SUMMARY OF PRE-REMEDIAL ACTION GROUNDWATER DATA**  
**EASTERN SITE**  
**GAINESVILLE, FLORIDA**

APPENDIX C

Summary of Pre-Remedial Action Groundwater Data  
Eastern Site, Gainesville, Florida

Well Designation	Parameters	IT Corp 1987 Results (µg/L) (1)	Hunter/ESE 1989 Results (µg/L) (2)	WESTON June 1992 Results (µg/L) (3)	WESTON October 1992 Results (µg/L) (3)	WESTON January 1993 Results (µg/L) (3)	WESTON April 1993 Results (µg/L) (3)	WESTON July 1993 Results (µg/L) (3)	WESTON October 1993 Results (µg/L) (3)	WESTON January 1994 Results (µg/L) (3)	WESTON April 1994 Results (µg/L) (3)	WESTON July 1994 Results (µg/L) (3)	WESTON October 1994 Results (µg/L) (3)	WESTON January 1995 Results (µg/L) (3)	WESTON April 1995 Results (µg/L) (3)	ROD Cleanup Goal (µg/L)
ITW-1	Chromium	110	60.4	ND	NS	ND	NS	ND	NS	ND	NS	ND	NS	ND	NS	*100
ITW-2	Chromium	100	124	39	NS	ND	NS	ND	NS	8	NS	ND	NS	ND	NS	*100
ITW-3	Chromium	40	NS	11	10	24	NS	NS	NS	NS	NS	NS	NS	NS	NS	*100
ITW-4	Chromium	110	45.1	10	9	27	ND	ND	NS	7	ND	ND	ND	23	ND	*100
	Naphthalene	40	35	30	27	17	27	31	NS	5.8	25	58	81	46	25	18
	Acenaphthylene	ND	<1.0	11	13	ND	ND	17	NS	ND	16	7.7	13	8	5.7	130
	Acenaphthene	ND	ND	ND	ND	ND	ND	ND	NS	ND	ND	2	3.5	ND	ND	260
ITW-5	Benzene	140	ND	20	52	20	24	11	NS	21	20	26	25	9.2	8	1
	Chromium	<140	47.1	42	NS	26	8	14	26	5	ND	ND	6	6	5	*100
	Arsenic	73	NS	56	NS	65	43	45	48	45	38	34	50	43	46	50
	PCP	30	120	300	NS	980	690	1,500	890	730	1,100	580	550	440	ND	0.1
	Phenol	ND	65	30	NS	750	990	2,600	2,000	1,850	2,600	1,200	900	700	1,200	2,630
	Naphthalene	1,600	1,000	500	NS	860	2,700	1,300	1,200	900	1,500	1,600	1,600	1,500	670	18
	Acenaphthylene	18	12	44	NS	ND	48	ND	34	69	59	73	74	100	20	130
	Acenaphthene	370	540	ND	NS	190	ND	440	ND	ND	220	460	530	610	320	260
	Fluorene	340	210	180	NS	ND	ND	ND	330	300	320	380	470	450	240	323
	Phenanthrene	290	280	160	NS	ND	130	ND	ND	210	280	300	380	320	200	130
	Anthracene	25	17	12	NS	ND	ND	ND	ND	ND	29	22	31	20	15	1,310
Benzene	<10	ND	4.8	NS	4.3	4.4	4.4	4.7	5	0.8	4.1	4.6	ND	5.7	4.6	1

The data presented in this table represents only those compounds that have been detected above detection limit in groundwater samples from the indicated wells.

- (1) Please see Table 6 of Remedial Investigation Report, Cabot Carbon/Koppers Site Vol. 1 (IT Corp., 1987) for analytical detection limits of individual compounds.
- (2) Please see Appendix B of Remedial Investigation/Risk Assessment at the Cabot Carbon/Koppers Site, Gainesville, Florida Vol. 3 (Hunter/ESE, 1989).
- (3) Please see individual groundwater report for analytical detection limits of compounds for different sampling events.

All results are in µg/L.

µg/L = micrograms per liter.

MDL = laboratory method detection limit.

ND = not detected above the MDL.

NS = not sampled for indicated compound.

\* The new EPA MCL for chromium is 100 µg/L. As per the ROD, this new MCL replaces the previous cleanup goals of 50 µg/L.

\*\* Cleanup goal for indicated compound has not been established.

+ Analytical results from January 1994 are suspect. Past groundwater data review indicates sample bottles may have been mislabeled.

++ Sampled only for BTEX constituents.

APPENDIX C

Summary of Pre-Remedial Action Groundwater Data  
Eastern Site, Gainesville, Florida

Well Designation	Parameters	IT Corp 1987 Results (µg/L) (1)	Hunter/ESE 1989 Results (µg/L) (2)	WESTON June 1992 Results (µg/L) (3)	WESTON October 1992 Results (µg/L) (3)	WESTON January 1993 Results (µg/L) (3)	WESTON April 1993 Results (µg/L) (3)	WESTON July 1993 Results (µg/L) (3)	WESTON October 1993 Results (µg/L) (3)	WESTON January 1994 Results (µg/L) (3)	WESTON April 1994 Results (µg/L) (3)	WESTON July 1994 Results (µg/L) (3)	WESTON October 1994 Results (µg/L) (3)	WESTON January 1995 Results (µg/L) (3)	WESTON April 1995 Results (µg/L) (3)	ROD Cleanup Goal (µg/L)	
ITW-6	Chromium	170	NS	170	110	NS	NS	NS	NS	NS	NS	7	NS	NS	NS	*100	
	Naphthalene	1,700	NS	1,100	580	NS	NS	NS	NS	NS	NS	450	NS	NS	NS	18	
	Acenaphthylene	ND	ND	ND	ND	NS	NS	NS	NS	NS	NS	11	NS	NS	NS	130	
	Acenaphthene	ND	ND	ND	ND	NS	NS	NS	NS	NS	NS	90	NS	NS	NS	260	
	Fluorene	200	NS	73	ND	NS	NS	NS	NS	NS	NS	83	NS	NS	NS	323	
	Phenanthrene	32	NS	19	ND	NS	NS	NS	NS	NS	NS	NS	28	NS	NS	NS	130
	Anthracene	<10	NS	2	ND	NS	NS	NS	NS	NS	NS	NS	2	NS	NS	NS	1,310
Benzene	<10	NS	1.2	1.5	NS	NS	NS	NS	NS	NS	NS	1	NS	NS	NS	1	
ITW-7	Chromium	280	NS	110	82	NS	NS	NS	NS	NS	NS	ND	NS	NS	NS	*100	
	Arsenic	23	NS	57	ND	NS	NS	NS	NS	NS	NS	ND	NS	NS	NS	50	
	Acenaphthylene	10	NS	ND	11	NS	NS	NS	NS	NS	NS	7.4	NS	NS	NS	130	
	Acenaphthene	ND	ND	ND	ND	NS	NS	NS	NS	NS	NS	2.7	NS	NS	NS	260	
	Fluorene	ND	ND	ND	ND	NS	NS	NS	NS	NS	NS	3.3	NS	NS	NS	323	
	Phenanthrene	ND	ND	ND	ND	NS	NS	NS	NS	NS	NS	0.4	NS	NS	NS	130	
	Anthracene	ND	ND	ND	ND	NS	NS	NS	NS	NS	NS	0.4	NS	NS	NS	1,310	
Total Potentially Carcinogenic PAHs	ND	NS	0.8	ND	NS	NS	NS	NS	NS	NS	NS	ND	NS	NS	NS	0.003	
Benzene	25	NS	14	12	NS	NS	NS	NS	NS	NS	NS	16	NS	NS	NS	1	
ITW-8	Chromium	80	NS	7	NS	NS	NS	NS	NS	NS	NS	ND	NS	NS	NS	*100	
	Arsenic	1	NS	ND	NS	NS	NS	NS	NS	NS	NS	ND	NS	NS	NS	50	
	Phenol	890	NS	720	NS	NS	NS	NS	NS	NS	NS	350	NS	NS	NS	2,630	
	Naphthalene	48	NS	15	NS	NS	NS	NS	NS	NS	NS	8.2	NS	NS	NS	18	
	Acenaphthylene	ND	NS	73	NS	NS	NS	NS	NS	NS	NS	100	NS	NS	NS	130	
	Acenaphthene	ND	ND	ND	NS	NS	NS	NS	NS	NS	NS	22	NS	NS	NS	260	
	Fluorene	ND	ND	ND	NS	NS	NS	NS	NS	NS	NS	1.2	NS	NS	NS	323	
Benzene	40	NS	ND	NS	NS	NS	NS	NS	47	NS	NS	31	NS	NS	NS	1	
ITW-9	Chromium	170	NS	14	NS	NS	NS	NS	NS	NS	NS	ND	NS	NS	NS	*100	
	Arsenic	4	NS	ND	NS	NS	NS	NS	NS	NS	NS	ND	NS	NS	NS	50	
	Naphthalene	ND	ND	ND	NS	NS	NS	NS	NS	NS	NS	30	NS	NS	NS	18	
	Acenaphthylene	ND	ND	ND	NS	NS	NS	NS	NS	NS	NS	120	NS	NS	NS	130	
	Acenaphthene	ND	ND	ND	NS	NS	NS	NS	NS	NS	NS	54	NS	NS	NS	260	
	Fluorene	ND	ND	ND	NS	NS	NS	NS	NS	NS	NS	3.6	NS	NS	NS	323	
	Phenanthrene	ND	ND	ND	NS	NS	NS	NS	NS	NS	NS	0.5	NS	NS	NS	130	
	Phenol	76	NS	180	NS	NS	NS	NS	NS	NS	NS	190	NS	NS	NS	2,630	
Benzene	<10	NS	31	NS	NS	NS	NS	NS	22	NS	NS	ND	NS	NS	NS	1	

APPENDIX C

Summary of Pre-Remedial Action Groundwater Data  
Eastern Site, Gainesville, Florida

Well Designation	Parameters	IT Corp 1987 Results (µg/L) (1)	Hunter/ESE 1989 Results (µg/L) (2)	WESTON June 1992 Results (µg/L) (3)	WESTON October 1992 Results (µg/L) (3)	WESTON January 1993 Results (µg/L) (3)	WESTON April 1993 Results (µg/L) (3)	WESTON July 1993 Results (µg/L) (3)	WESTON October 1993 Results (µg/L) (3)	WESTON January 1994 Results (µg/L) (3)	WESTON April 1994 Results (µg/L) (3)	WESTON July 1994 Results (µg/L) (3)	WESTON October 1994 Results (µg/L) (3)	WESTON January 1995 Results (µg/L) (3)	WESTON April 1995 Results (µg/L) (3)	ROD Cleanup Goal (µg/L)
ITW-10 +	Chromium	100	NS	77	53	71	19	12	30	9	ND	ND	8	5	5	*100
	Phenol	ND	NS	5,400	3,060	7,900	13,000	13,000	8,300	ND	1,800	1,200	500	284	310	2,630
	Naphthalene	ND	NS	ND	ND	14	35	84	ND	ND	ND	ND	ND	ND	ND	18
	Acenaphthylene	ND	NS	ND	ND	640	41	470	25	8.5	ND	ND	310	ND	ND	130
	Fluorene	ND	NS	ND	ND	2.6	ND	ND	1.1	ND	ND	0.7	ND	ND	ND	323
	Benzene	150	NS	320	200	250	130	120	120	61	59	65	12	64	60	1
ITW-11 +	Chromium	240	NS	130	12	23	ND	ND	ND	ND	ND	ND	ND	ND	ND	*100
	Arsenic	9	NS	21	ND	ND	ND	ND	ND	ND	ND	ND	ND	ND	ND	50
	Acenaphthylene	ND	NS	ND	15	ND	7.8	59	61	400	ND	ND	ND	ND	ND	130
	Fluorene	ND	ND	ND	ND	ND	ND	ND	ND	ND	ND	0.8	ND	ND	ND	323
	Phenanthrene	ND	NS	ND	0.3	ND	ND	ND	ND	ND	ND	ND	ND	ND	0.4	130
	Pyrene	ND	NS	ND	0.6	ND	ND	ND	ND	ND	ND	ND	ND	ND	ND	130
	Total Potentially Carcinogenic PAHs	ND	NS	ND	4.7	ND	ND	ND	ND	ND	ND	ND	ND	ND	ND	0.003
	Benzene	<10	NS	3.3	2.7	2.5	1.6	2.7	3.7	2.8	2.5	1.1	0.6	3.7	4.1	1
Phenol	ND	NS	ND	ND	ND	ND	ND	ND	8,500	ND	ND	ND	ND	ND	2,630	
ITW-12	Chromium	0.06	NS	NS	NS	NS	NS	12	ND	ND	NS	NS	NS	NS	NS	*100
ITW-13	Chromium	80	34.4	10	13	10	ND	ND	ND	ND	ND	ND	6	ND	ND	*100
	Phenol	ND	6,500	2,700	2,500	4,000	11,000	7,000	9,300	8,900	6,200	7,500	4,820	5,720	7,100	2,630
	Naphthalene	ND	59	38	6.1	32	84	71	83	51	35	63	40	47	34	18
	Acenaphthylene	ND	<20	35	46	210	240	12	ND	300	ND	ND	370	ND	ND	130
	Acenaphthene	ND	ND	ND	ND	ND	ND	ND	ND	ND	ND	ND	ND	33	ND	260
	Fluorene	ND	<20	0.3	0.7	0.8	1.2	1.1	1.6	1.8	ND	2.8	3.7	2.1	1.7	323
	Phenanthrene	ND	<20	0.3	ND	0.3	ND	0.4	0.4	0.2	0.26	0.5	0.5	0.6	0.43	130
	Anthracene	ND	?	ND	ND	ND	ND	ND	ND	ND	ND	0.2	ND	0.18	0.16	1,310
	Total Potentially Carcinogenic PAHs	ND	ND	ND	ND	ND	ND	ND	ND	ND	ND	ND	0.47	ND	ND	0.003
Benzene	100	ND	130	140	130	82	49	65	55	75	64	59	62	66	1	

APPENDIX C

Summary of Pre-Remedial Action Groundwater Data  
Eastern Site, Gainesville, Florida

Well Designation	Parameters	IT Corp 1987 Results (µg/L) (1)	Hunter/ESE 1989 Results (µg/L) (2)	WESTON June 1992 Results (µg/L) (3)	WESTON October 1992 Results (µg/L) (3)	WESTON January 1993 Results (µg/L) (3)	WESTON April 1993 Results (µg/L) (3)	WESTON July 1993 Results (µg/L) (3)	WESTON October 1993 Results (µg/L) (3)	WESTON January 1994 Results (µg/L) (3)	WESTON April 1994 Results (µg/L) (3)	WESTON July 1994 Results (µg/L) (3)	WESTON October 1994 Results (µg/L) (3)	WESTON January 1995 Results (µg/L) (3)	WESTON April 1995 Results (µg/L) (3)	ROD Cleanup Goal (µg/L)	
ITW-14	Chromium	140	NS	ND	7	10	ND	5	ND	6	ND	ND	ND	ND	5	*100	
	Phenol	4,100	NS	2,700	2,300	1,600	14,000	9,900	12,000	8,600	5,000	6,700	910	4,460	1,700	2,630	
	Naphthalene	18	NS	170	ND	ND	1,100	390	ND	1,100	480	5,400	700	350	240	18	
	Acenaphthylene	<10	NS	190	1,600	360	1,200	1,800	9,900	2,700	1,200	13,000	2,000	890	650	130	
	Acenaphthene	<10	NS	ND	ND	83	ND	ND	ND	ND	3,100	48,000	3,300	1,400	720	260	
	Fluorene	ND	NS	72	80	51	31	50	1,100	370	700	3,500	330	71	59	323	
	Phenanthrene	<10	NS	40	12	ND	37	36	ND	230	190	2,000	180	25	23	130	
	Anthracene	ND	NS	ND	ND	ND	ND	ND	ND	ND	53	270	16	3.1	3.8	1,310	
	Total Potentially Carcinogenic PAHs	ND	NS	49	1,000	19.6	ND	ND	ND	6,040	1,590	ND	ND	410	32	71	0.003
	Benzene	130	NS	45	180	170	68	150	180	120	130	140	160	160	120	1	
Pyrene	ND	NS	ND	ND	ND	ND	ND	ND	5,000	ND	ND	ND	69	ND	6.4	130	
ITW-15	Chromium	70	NS	6	NS	NS	NS	NS	NS	NS	NS	ND	NS	NS	NS	*100	
	Arsenic	9	NS	ND	NS	NS	NS	NS	NS	NS	NS	ND	NS	NS	NS	50	
	Phenol	2,200	NS	260	NS	NS	NS	NS	NS	NS	NS	140	NS	NS	NS	2,630	
	Naphthalene	ND	NS	ND	NS	NS	NS	NS	NS	NS	NS	4.2	NS	NS	NS	18	
	Acenaphthylene	ND	NS	120	NS	NS	NS	NS	NS	NS	NS	ND	NS	NS	NS	130	
	Fluorene	ND	NS	0.6	NS	NS	NS	NS	NS	NS	NS	1.4	NS	NS	NS	323	
	Benzene	19	NS	7	NS	NS	NS	NS	NS	NS	NS	3	NS	NS	NS	1	
ITW-16	Chromium	200	NS	61	NS	NS	NS	NS	NS	NS	NS	ND	NS	NS	NS	*100	
	Arsenic	10	NS	ND	NS	NS	NS	NS	NS	NS	NS	ND	NS	NS	NS	50	
	Naphthalene	16	NS	3.5	NS	NS	NS	NS	NS	NS	NS	7.9	NS	NS	NS	18	
	Acenaphthylene	ND	NS	130	NS	NS	NS	NS	NS	NS	NS	140	NS	NS	NS	130	
	Acenaphthene	ND	ND	ND	NS	NS	NS	NS	NS	NS	NS	3.6	NS	NS	NS	260	
	Fluorene	ND	ND	ND	NS	NS	NS	NS	NS	NS	NS	0.5	NS	NS	NS	323	
	Benzene	<10	NS	ND	NS	NS	NS	NS	NS	NS	NS	NS	ND	NS	NS	1	
ITW-17	Chromium	190	14.3	29	34	12	5	5	NS	NS	NS	NS	NS	NS	NS	*100	
	Phenol	<10	6,200	660	1,080	1,400	ND	3,800	NS	NS	NS	NS	NS	NS	NS	2,630	
	Naphthalene	ND	140	21	9.4	23	21	170	NS	NS	NS	NS	NS	NS	NS	18	
	Acenaphthylene	ND	<20	ND	140	ND	25	310	NS	NS	NS	NS	NS	NS	NS	130	
	Acenaphthene	ND	<20	ND	ND	3.7	ND	ND	NS	NS	NS	NS	NS	NS	NS	260	
	Fluorene	ND	<20	ND	0.5	0.9	ND	7.3	NS	NS	NS	NS	NS	NS	NS	323	
	Phenanthrene	<10	<20	1.3	ND	0.8	0.2	0.9	NS	NS	NS	NS	NS	NS	NS	130	
	Benzene	12	ND	26	17	36	10	39	NS	NS	NS	NS	NS	NS	NS	1	



APPENDIX C

Summary of Pre-Remedial Action Groundwater Data  
Eastern Site, Gainesville, Florida

Well Designation	Parameters	IT Corp 1987 Results (µg/L) (1)	Hunter/ESE 1989 Results (µg/L) (2)	WESTON June 1992 Results (µg/L) (3)	WESTON October 1992 Results (µg/L) (3)	WESTON January 1993 Results (µg/L) (3)	WESTON April 1993 Results (µg/L) (3)	WESTON July 1993 Results (µg/L) (3)	WESTON October 1993 Results (µg/L) (3)	WESTON January 1994 Results (µg/L) (3)	WESTON April 1994 Results (µg/L) (3)	WESTON July 1994 Results (µg/L) (3)	WESTON October 1994 Results (µg/L) (3)	WESTON January 1995 Results (µg/L) (3)	WESTON April 1995 Results (µg/L) (3)	ROD Cleanup Goal (µg/L)	
WMW-17E	Chromium	NS	NS	NS	NS	NS	NS	25	5	ND	ND	ND	ND	6	10	*100	
	Benzene	NS	NS	NS	NS	NS	NS	2.5	20	3.3	1.4	2.5	2.3	49	14	1	
	Naphthalene	NS	NS	NS	NS	NS	NS	4.5	15	3.5	ND	2.1	ND	20	6	18	
	Acenaphthylene	NS	NS	NS	NS	NS	NS	10	ND	7.1	ND	4.2	ND	ND	ND	130	
	Acenaphthene	NS	NS	NS	NS	NS	NS	ND	ND	ND	ND	ND	13	6.2	ND	260	
	Anthracene	NS	NS	NS	NS	NS	NS	ND	ND	ND	ND	ND	0.9	0.39	0.2	ND	1,310
	Pyrene	NS	NS	NS	NS	NS	NS	ND	ND	ND	ND	ND	2.4	ND	ND	ND	130
	Fluorene	NS	NS	NS	NS	NS	NS	0.7	ND	ND	ND	ND	0.3	1.2	1.3	ND	323
	PCP	NS	NS	NS	NS	NS	NS	NS	ND	ND	ND	ND	ND	94	ND	ND	0.1
	Phenol	NS	NS	NS	NS	NS	NS	NS	ND	3,000	ND	ND	ND	ND	340	ND	2,630
Phenanthrene	NS	NS	NS	NS	NS	NS	NS	ND	0.5	ND	ND	ND	1.3	0.32	ND	130	
Total Potentially Carcinogenic PAHs	NS	NS	NS	NS	NS	NS	NS	ND	ND	ND	ND	ND	2	ND	ND	0.003	
ITW-18	Chromium	110	126	44	47	33	14	16	NS	NS	NS	NS	NS	NS	NS	*100	
WMW-18E	Chromium	NS	NS	NS	NS	NS	NS	130	10	8	29	17	230	140	50	*100	
	Arsenic	NS	NS	NS	NS	NS	NS	ND	ND	ND	ND	ND	19	ND	ND	50	
	PCP	NS	NS	NS	NS	NS	NS	ND	ND	ND	ND	ND	34	ND	ND	0.1	
	Acenaphthylene	NS	NS	NS	NS	NS	NS	5.6	6.8	ND	3.2	7.6	10	ND	ND	130	
	Pyrene	NS	NS	NS	NS	NS	NS	ND	ND	ND	ND	ND	ND	0.21	ND	130	
	Fluorene	NS	NS	NS	NS	NS	NS	ND	ND	ND	0.5	ND	ND	ND	ND	323	
	Total Potentially Carcinogenic PAHs	NS	NS	NS	NS	NS	NS	0.4	ND	ND	ND	ND	0.5	0.88	ND	ND	0.003
ITW-19	Chromium	420	NS	47	10	7.4	7	9	ND	9	ND	ND	ND	ND	ND	*100	
	Naphthalene	150	NS	96	89	62	88	110	59	68	79	180	170	180	130	18	
	Acenaphthylene	ND	NS	ND	ND	ND	9.7	8.5	ND	ND	ND	13	7.2	8.4	ND	130	
	Acenaphthene	ND	NS	ND	ND	7.5	ND	ND	ND	7.4	7.7	28	21	28	17	260	
	Fluorene	<10	NS	ND	6.2	6	9.2	ND	ND	7.9	7.3	17	14	15	10	323	
	Phenanthrene	ND	NS	ND	0.6	0.2	0.6	0.7	0.2	0.3	0.3	0.8	0.54	0.68	0.66	130	
	Anthracene	ND	NS	ND	ND	ND	ND	ND	ND	ND	ND	0.2	0.4	0.26	0.25	0.26	1,310
	Benzene	<10	NS	0.9	1.1	1	0.6	0.8	1.2	0.9	1	ND	0.9	0.9	0.9	1	
ITW-20	Chromium	470	148	25	13	6.5	ND	ND	ND	8	21	ND	ND	ND	ND	*100	
	Benzene	ND	ND	ND	ND	ND	ND	ND	ND	ND	ND	ND	ND	ND	1.7	1	

APPENDIX C

Summary of Pre-Remedial Action Groundwater Data  
Eastern Site, Gainesville, Florida

Well Designation	Parameters	IT Corp 1987 Results (µg/L) (1)	Hunter/ESE 1989 Results (µg/L) (2)	WESTON June 1992 Results (µg/L) (3)	WESTON October 1992 Results (µg/L) (3)	WESTON January 1993 Results (µg/L) (3)	WESTON April 1993 Results (µg/L) (3)	WESTON July 1993 Results (µg/L) (3)	WESTON October 1993 Results (µg/L) (3)	WESTON January 1994 Results (µg/L) (3)	WESTON April 1994 Results (µg/L) (3)	WESTON July 1994 Results (µg/L) (3)	WESTON October 1994 Results (µg/L) (3)	WESTON January 1995 Results (µg/L) (3)	WESTON April 1995 Results (µg/L) (3)	ROD Cleanup Goal (µg/L)
ITW-21	Chromium	60	29.9	8	NS	6.2	ND	ND	NS	ND	ND	ND	ND	ND	ND	*100
	Arsenic	2	NS	42	NS	46	18	20	NS	22	13	15	12	14	10	50
	PCP	ND	ND	ND	ND	ND	ND	ND	NS	ND	ND	ND	124	ND	ND	0.1
	Naphthalene	3,400	2,700	4,600	NS	4,300	70	3,100	NS	6,000	3,000	6,600	7,200	6,200	4,500	18
	Acenaphthylene	11	<4.0	260	NS	ND	12	ND	NS	230	94	180	290	220	150	130
	Acenaphthene	210	380	ND	NS	200	ND	ND	NS	ND	100	460	430	380	300	260
	Fluorene	130	160	5.6	NS	120	ND	15	NS	180	100	210	270	220	180	323
	Phenanthrene	ND	69	82	NS	45	ND	5	NS	63	47	79	87	68	55	130
Anthracene	ND	ND	ND	NS	ND	ND	ND	NS	ND	1.6	2	1.1	1.3	1.2	1,310	
Benzene	ND	ND	8.2	NS	6	5.4	28	NS	3.1	4	3.7	3.5	3.7	2.9	1	
ITW-22	Chromium	100	NS	11	NS	11	ND	ND	NS	ND	ND	ND	ND	ND	ND	*100
	Arsenic	8	NS	13	NS	ND	ND	ND	NS	ND	ND	ND	ND	ND	ND	50
	PCP	ND	ND	ND	NS	ND	ND	ND	NS	ND	ND	ND	52	ND	ND	0.1
	Naphthalene	<10	NS	ND	NS	1.5	ND	ND	NS	ND	ND	11	ND	3.1	ND	18
	Acenaphthene	ND	ND	ND	NS	ND	ND	ND	NS	ND	ND	3.9	ND	ND	ND	260
	Phenanthrene	ND	ND	ND	NS	ND	ND	ND	NS	ND	ND	0.2	ND	ND	ND	130
	Total Potentially Carcinogenic PAHs	<10	NS	0.2	NS	ND	ND	ND	NS	ND	ND	ND	ND	ND	ND	0.003
ESE-001	Chromium	NS	62.4	51	NS	NS	NS	NS	NS	NS	NS	NS	NS	NS	NS	*100
	Acenaphthene	NS	1.3	ND	NS	NS	NS	NS	NS	NS	NS	NS	NS	NS	NS	260
	Naphthalene	NS	5.2	ND	NS	NS	NS	NS	NS	NS	NS	NS	NS	NS	NS	18
ESE-002	Chromium	NS	55.6	170	120	39	ND	ND	ND	28	5	ND	19	ND	7	*100
	Naphthalene	NS	27	ND	ND	2	59	7.3	4.8	42	110	12	ND	9.5	6.7	18
	Acenaphthylene	NS	<1.0	ND	ND	ND	5.5	ND	ND	ND	2.9	4	11	ND	10	130
	Acenaphthene	NS	9.3	ND	ND	ND	ND	ND	ND	8.8	4.6	ND	ND	ND	ND	260
	Fluorene	NS	4.4	ND	ND	1	ND	ND	ND	13	9.4	5.1	1.2	2.5	ND	323
	Phenanthrene	NS	<1.0	18	0.4	1.5	3.7	1.2	1.4	12	9.4	9.4	1.2	1.1	0.55	130
	Anthracene	NS	<1.0	1.2	ND	ND	ND	ND	ND	0.8	0.5	0.9	0.29	0.28	0.16	1,310
	Benzene	NS	ND	13	5.2	7.7	4.3	9.2	11	4.2	2.5	2.5	0.8	5	5.1	1
	Pyrene	NS	<1.0	ND	ND	ND	ND	ND	ND	0.6	1.1	2.4	1.8	1.7	1.1	130
	Total Potentially Carcinogenic PAHs	NS	ND	ND	ND	ND	ND	ND	ND	ND	0.3	ND	0.33	ND	ND	0.003
ESE-003	Chromium	NS	31.3	100	NS	NS	NS	NS	NS	NS	NS	NS	NS	NS	NS	*100
	Benzene	NS	NS	0.8	NS	NS	NS	NS	NS	NS	NS	NS	NS	NS	NS	1

APPENDIX C

Summary of Pre-Remedial Action Groundwater Data  
Eastern Site, Gainesville, Florida

Well Designation	Parameters	IT Corp 1987 Results (µg/L) (1)	Hunter/ESE 1989 Results (µg/L) (2)	WESTON June 1992 Results (µg/L) (3)	WESTON October 1992 Results (µg/L) (3)	WESTON January 1993 Results (µg/L) (3)	WESTON April 1993 Results (µg/L) (3)	WESTON July 1993 Results (µg/L) (3)	WESTON October 1993 Results (µg/L) (3)	WESTON January 1994 Results (µg/L) (3)	WESTON April 1994 Results (µg/L) (3)	WESTON July 1994 Results (µg/L) (3)	WESTON October 1994 Results (µg/L) (3)	WESTON January 1995 Results (µg/L) (3)	WESTON April 1995 Results (µg/L) (3)	ROD Cleanup Goal (µg/L)
ESE-004	Chromium	NS	70.2	120	29	29	ND	9	8	7	6	ND	8	5	13	*100
	Phenol	NS	260	ND	23	ND	50	40	ND	ND	315	ND	16	ND	610	2,630
	Naphthalene	NS	ND	ND	ND	ND	ND	ND	ND	ND	ND	ND	ND	ND	6.5	18
	Acenaphthylene	NS	ND	ND	ND	ND	ND	5	ND	ND	ND	ND	ND	ND	ND	130
	Phenanthrene	NS	ND	ND	ND	ND	ND	ND	0.5	ND	ND	0.2	ND	ND	ND	130
	Anthracene	NS	ND	ND	ND	ND	ND	ND	ND	ND	ND	ND	ND	0.21	ND	1,310
	Benzene	NS	ND	ND	ND	ND	ND	ND	3.2	ND	1.8	ND	ND	ND	3.6	1
Fluorene	NS	<1.0	ND	ND	ND	ND	ND	ND	0.3	ND	0.7	ND	ND	ND	323	
ESE-005	Chromium	NS	59.2	110	53	20	11	ND	ND	ND	ND	ND	ND	ND	ND	*100
	PCP	NS	ND	ND	ND	ND	ND	ND	ND	ND	ND	ND	90	ND	ND	0.1
	Phenol	NS	ND	ND	ND	ND	ND	ND	ND	ND	ND	90	ND	ND	56	2,630
	Naphthalene	NS	1,300	660	97	730	170	400	1,000	1,100	420	610	1,100	1,200	3,600	18
	Acenaphthylene	NS	<5.0	81	89	ND	ND	ND	320	ND	49	35	270	84	300	130
	Acenaphthene	NS	68	17	ND	ND	ND	360	ND	ND	ND	44	49	120	190	260
	Fluorene	NS	30	21	4.7	22	10	ND	3.9	45	13	16	42	41	61	323
	Phenanthrene	NS	4.3	4.1	1.1	3.7	1.8	3.4	2.5	8.9	3.5	2.9	5	8.1	20	130
	Anthracene	NS	ND	ND	ND	ND	ND	ND	ND	ND	0.3	0.3	0.62	0.53	0.96	1,310
	Pyrene	NS	ND	ND	ND	ND	ND	ND	ND	ND	0.7	ND	ND	ND	4.2	130
	Total Potentially Carcinogenic PAHs	NS	<61	ND	2.1	ND	ND	ND	ND	ND	ND	ND	ND	ND	ND	0.003
ESE-006	Benzene	NS	<100	50	49	59	45	75	130	56	48	86	85	90	150	1
	Chromium	NS	230	64	NS	NS	NS	NS	NS	NS	NS	NS	NS	NS	NS	*100
	Phenol	NS	81	ND	NS	NS	NS	NS	NS	NS	NS	NS	NS	NS	NS	2,630
	Naphthalene	NS	340	560	NS	NS	NS	NS	NS	NS	NS	NS	NS	NS	NS	18
	Acenaphthylene	NS	<20	880	NS	NS	NS	NS	NS	NS	NS	NS	NS	NS	NS	130
	Fluorene	NS	ND	24	NS	NS	NS	NS	NS	NS	NS	NS	NS	NS	NS	323
	Phenanthrene	NS	ND	7.9	NS	NS	NS	NS	NS	NS	NS	NS	NS	NS	NS	130
ESE-007	Benzene	NS	320	65	NS	NS	60	NS	NS	NS	NS	NS	NS	NS	NS	1
	Chromium	NS	45.7	96	47	26	11	9	24	22	5	ND	15	9	10	*100
	Phenol	NS	11,000	240	490	1,550	890	5,000	4,300	6,400	2,100	4,000	3,200	830	540	2,630
	Naphthalene	NS	<40	2.4	12	21	14	25	13	14	15	19	17	35	21	18
	Acenaphthylene	NS	<40	130	210	320	110	ND	9.1	450	ND	ND	440	ND	ND	130
	Acenaphthene	NS	ND	ND	ND	ND	ND	ND	ND	ND	ND	ND	ND	13	ND	260
	Phenanthrene	NS	ND	ND	ND	ND	ND	ND	ND	ND	ND	ND	0.69	ND	0.31	130
	Anthracene	NS	ND	ND	ND	ND	ND	ND	ND	ND	ND	ND	0.25	ND	0.22	1,310
	Fluorene	NS	<40	ND	ND	0.8	ND	ND	1	1.6	ND	2.1	ND	2.8	ND	323
Total Potentially Carcinogenic PAHs	NS	ND	ND	ND	ND	ND	ND	ND	ND	ND	ND	0.29	ND	ND	0.003	
Benzene	NS	ND	74	30	48	9.8	37	25	33	30	38	35	34	10	1	

APPENDIX C

Summary of Pre-Remedial Action Groundwater Data  
Eastern Site, Gainesville, Florida

Well Designation	Parameters	IT Corp 1987 Results (µg/L) (1)	Hunter/ESE 1989 Results (µg/L) (2)	WESTON June 1992 Results (µg/L) (3)	WESTON October 1992 Results (µg/L) (3)	WESTON January 1993 Results (µg/L) (3)	WESTON April 1993 Results (µg/L) (3)	WESTON July 1993 Results (µg/L) (3)	WESTON October 1993 Results (µg/L) (3)	WESTON January 1994 Results (µg/L) (3)	WESTON April 1994 Results (µg/L) (3)	WESTON July 1994 Results (µg/L) (3)	WESTON October 1994 Results (µg/L) (3)	WESTON January 1995 Results (µg/L) (3)	WESTON April 1995 Results (µg/L) (3)	ROD Cleanup Goal (µg/L)
ITF-1 ++	Benzene	ND	ND	ND	ND	NS	NS	NS	NS	NS	NS	NS	NS	NS	NS	1
	Toluene	ND	ND	1.6	1.6	NS	NS	NS	NS	NS	NS	NS	NS	NS	NS	**
	Ethylbenzene	ND	ND	1.4	ND	NS	NS	NS	NS	NS	NS	NS	NS	NS	NS	**
	Xylenes	NS	NS	3.1	4.3	NS	NS	NS	NS	NS	NS	NS	NS	NS	NS	**
ITF-2 ++	Benzene	ND	ND	ND	NS	NS	NS	NS	NS	NS	NS	NS	NS	NS	NS	1
	Toluene	ND	ND	ND	NS	NS	NS	NS	NS	NS	NS	NS	NS	NS	NS	**
	Ethylbenzene	ND	ND	ND	NS	NS	NS	NS	NS	NS	NS	NS	NS	NS	NS	**
	Xylenes	NS	NS	ND	NS	NS	NS	NS	NS	NS	NS	NS	NS	NS	NS	**
ITF-3 ++	Benzene	ND	ND	2.8	3.5	3.6	2.4	2.6	3.5	2.7	NS	NS	NS	NS	NS	1
	Toluene	ND	ND	1	ND	ND	ND	ND	ND	ND	NS	NS	NS	NS	NS	**
	Ethylbenzene	ND	ND	ND	ND	ND	ND	ND	ND	ND	NS	NS	NS	NS	NS	**
	Xylenes	NS	NS	1.1	1.6	1.4	1.3	3	2	2.1	NS	NS	NS	NS	NS	**

The data presented in this table represents only those compounds that have been detected above detection limit in groundwater samples from the indicated wells.

- (1) Please see Table 6 of Remedial Investigation Report, Cabot Carbon/Koppers Site Vol. 1 (IT Corp., 1987) for analytical detection limits of individual compounds.
- (2) Please see Appendix B of Remedial Investigation/Risk Assessment at the Cabot Carbon/Koppers Site, Gainesville, Florida Vol. 3 (Hunter/ESE, 1989).
- (3) Please see individual groundwater report for analytical detection limits of compounds for different sampling events.

All results are in µg/L.

µg/L = micrograms per liter.

MDL = laboratory method detection limit.

ND = not detected above the MDL.

NS = not sampled for indicated compound.

\* The new EPA MCL for chromium is 100 µg/L. As per the ROD, this new MCL replaces the previous cleanup goals of 50 µg/L.

\*\* Cleanup goal for indicated compound has not been established.

+ Analytical results from January 1994 are suspect. Past groundwater data review indicates sample bottles may have been mislabeled.

++ Sampled only for BTEX constituents.

**APPENDIX D**

**SUMMARY OF POST-REMEDIAL ACTION GROUNDWATER DATA**  
**EASTERN SITE**  
**GAINESVILLE, FLORIDA**

Appendix D

Summary of Recent Post-Remedial Action Groundwater Data  
Eastern Site, Gainesville, Florida

WELL DESIGNATION	PARAMETERS	Mar-03	Jun-03	Sep-03	Dec-03	Mar-04	Jun-04	Sep-04	Dec-04	Mar-05	Jun-05	Sep-05	Dec-05	Mar-06	Jun-06	Sep-06	Dec-06	Mar-07	Jun-07	Sep-07	Dec-07	Mar-08	Jun-08	ROD cleanup goal		
ITW-1	Chromium	ND	ND	ND	ND	ND	ND	ND	ND	ND	ND	ND	ND	ND	ND	ND	ND	ND	ND	ND	ND	ND	ND	ND	*100	
ITW-1	Acenaphthene	0.67	ND	0.72	0.6	0.19	0.50	0.47	ND	ND	ND	ND	ND	ND	ND	ND	ND	ND	ND	ND	1	ND	ND	260		
ITW-1	Anthracene	ND	ND	ND	ND	ND	0.079	0.044	ND	ND	ND	ND	ND	ND	ND	ND	ND	ND	ND	ND	ND	ND	ND	ND	1,310	
ITW-1	Fluorene	0.9	0.54	0.81	0.49	0.32	0.31	0.37	ND	ND	ND	ND	ND	ND	ND	ND	ND	ND	ND	ND	ND	ND	ND	ND	323	
ITW-1	Naphthalene	ND	ND	ND	ND	ND	ND	1.60	ND	ND	ND	ND	ND	ND	ND	ND	ND	ND	ND	ND	ND	ND	ND	ND	18	
ITW-1	Phenanthrene	ND	ND	ND	ND	ND	0.045	ND	ND	ND	ND	ND	ND	ND	ND	ND	ND	ND	ND	ND	ND	ND	ND	ND	130	
ITW-1	1- Methylnaphthalene	ND	ND	ND	ND	ND	0.52	ND	ND	ND	ND	ND	ND	ND	ND	ND	ND	ND	ND	ND	ND	ND	ND	ND	*	
ITW-1	2- Methylnaphthalene	ND	ND	ND	ND	ND	0.66	ND	ND	ND	ND	ND	ND	ND	ND	ND	ND	ND	ND	ND	ND	ND	ND	ND	*	
ITW-2	Benzene	ND	ND	ND	ND	ND	1.7	ND	ND	ND	ND	ND	ND	ND	ND	ND	ND	ND	ND	ND	ND	ND	ND	ND	1	
ITW-2	Total Xylenes	ND	ND	ND	ND	ND	1.4	ND	ND	ND	ND	ND	ND	ND	ND	ND	ND	ND	ND	ND	ND	ND	ND	ND	*	
ITW-2	Acenaphthene	ND	0.66	1.3	0.8	0.12	67	ND	ND	ND	ND	ND	ND	ND	ND	ND	ND	ND	ND	ND	ND	ND	ND	ND	260	
ITW-2	Anthracene	ND	ND	ND	ND	ND	1.9	ND	ND	ND	ND	ND	ND	ND	ND	ND	ND	ND	ND	ND	ND	ND	ND	ND	1,310	
ITW-2	Fluoranthene	ND	ND	ND	ND	ND	10	ND	ND	ND	ND	ND	ND	ND	ND	ND	ND	ND	ND	ND	ND	ND	ND	ND	*	
ITW-2	Fluorene	0.98	1	1.6	1.3	0.61	52	0.19	ND	0.56	ND	0.52	ND	ND	ND	ND	ND	ND	ND	ND	ND	ND	ND	ND	323	
ITW-2	Naphthalene	ND	ND	ND	ND	ND	28	ND	ND	ND	ND	ND	ND	1.5	ND	ND	ND	ND	ND	ND	ND	ND	ND	ND	18	
ITW-2	Phenanthrene	ND	ND	ND	ND	ND	42	ND	ND	ND	ND	ND	ND	ND	ND	ND	ND	ND	ND	ND	ND	ND	ND	ND	130	
ITW-2	Pyrene	ND	ND	ND	ND	ND	4.8	ND	ND	ND	ND	ND	ND	ND	ND	ND	ND	ND	ND	ND	ND	ND	ND	ND	130	
ITW-2	2- Methylnaphthalene	ND	ND	ND	ND	ND	58	ND	ND	ND	ND	ND	ND	ND	ND	ND	ND	ND	ND	ND	ND	ND	ND	ND	*	
ITW-2	Chromium	ND	ND	ND	ND	ND	ND	ND	ND	ND	ND	ND	ND	ND	ND	ND	ND	ND	12	ND	ND	ND	ND	ND	*100	
ITW-13	Benzene	82	85	55	120	61	72	ND	63	ND	ND	ND	58	64	88	81	87	81	88	81	74	100	73	1	1	
ITW-13	Toluene	460	430	250	350	250	300	350	230	190	170	170	270	280	280	310	290	310	440	390	280	420	320	320	*	
ITW-13	Ethylbenzene	320	300	220	370	240	240	260	250	190	230	240	260	260	280	280	300	270	270	260	270	350	320	320	*	
ITW-13	Total Xylenes	208	174	116	255	154	135	144	150	120	150	140	160	160	190	190	190	180	180	170	160	210	200	200	*	
ITW-13	Acenaphthene	ND	0.52	ND	ND	0.17	ND	ND	ND	ND	ND	ND	ND	ND	ND	ND	ND	ND	ND	ND	ND	ND	ND	ND	260	
ITW-13	Acenaphthylene	56	24	ND	ND	13	1.2	12	ND	ND	ND	9.8	ND	ND	ND	ND	ND	ND	ND	ND	ND	ND	ND	ND	130	
ITW-13	Anthracene	ND	ND	ND	ND	0.0084	ND	ND	ND	ND	ND	ND	ND	ND	ND	ND	ND	ND	ND	ND	ND	ND	ND	ND	1,310	
ITW-13	Benzo (a) anthracene	ND	ND	ND	ND	0.012	ND	ND	ND	ND	ND	ND	ND	ND	ND	ND	ND	ND	ND	ND	ND	ND	ND	ND	PAH	
ITW-13	Benzo (b) fluoranthene	ND	ND	ND	ND	0.031	ND	ND	ND	ND	ND	ND	ND	ND	ND	ND	ND	ND	ND	ND	ND	ND	ND	ND	PAH	
ITW-13	Fluorene	0.56	ND	ND	ND	ND	ND	ND	ND	ND	ND	ND	ND	ND	ND	ND	ND	ND	ND	ND	ND	ND	ND	ND	323	
ITW-13	Naphthalene	84	55	80	35	28	36	34	ND	24	23	21	31	54	48	45	26	ND	45	71	41	53	38	18		
ITW-13	Phenanthrene	ND	ND	ND	ND	ND	ND	ND	ND	ND	ND	ND	ND	ND	ND	ND	ND	ND	ND	ND	ND	ND	ND	ND	130	
ITW-13	Total Potentially Carcinogenic PAHs	ND	ND	ND	ND	0.043	ND	ND	ND	ND	ND	ND	ND	ND	ND	ND	ND	ND	ND	ND	ND	ND	ND	ND	0.003	
ITW-13	1- Methylnaphthalene	2.5	4.3	ND	3	1.2	ND	ND	ND	ND	ND	ND	ND	2.7	4.6	3.3	ND	ND	5.8	ND	2.3	3.3	ND	ND	*	
ITW-13	2- Methylnaphthalene	5.8	5.5	ND	3.4	2.4	1.5	0.99	ND	ND	ND	1.6	ND	4.1	3.9	3.7	ND	ND	3.4	ND	2.4	3.9	ND	ND	*	
ITW-13	Phenol	9000	4100	2000	5800	7700	4200	10000	5300	2400	ND	940	5200	6200	13000	8800	4600	1500	3100	6100	6300	5900	8300	2630	2630	
ITW-13	2,4- Dimethylphenol	3000	3300	2600	2000	2800	2200	2700	2900	1800	990	2600	2200	1800	3100	2600	1900	830	1800	2200	2000	2300	2400	2400	*	
ITW-13	2- Methylphenol	NS	NS	NS	NS	NS	NS	NS	NS	1800	440	1700	NS	NS	NS	NS	NS	NS	NS	NS	NS	NS	NS	NS	NS	*
ITW-13	3&4- Methylphenol	NS	NS	NS	NS	NS	NS	NS	NS	6000	950	2700	NS	NS	NS	NS	NS	NS	NS	NS	NS	NS	NS	NS	NS	*
ITW-13	Arsenic	ND	ND	ND	ND	ND	11	ND	ND	ND	ND	ND	ND	10	ND	ND	ND	ND	ND	ND	ND	12	10	50	50	
ITW-13	Chromium	22	ND	ND	ND	12	ND	ND	ND	14	ND	ND	ND	ND	11	ND	ND	ND	ND	ND	ND	ND	ND	ND	*100	
ITW-14	Benzene	ND	ND	30	45	31	43	ND	33	26	ND	ND	ND	25	31	57	47	26	ND	ND	39	46	28	1	1	
ITW-14	Toluene	490	360	590	880	540	730	300	630	440	470	380	350	440	420	790	650	230	670	500	580	700	430	430	*	
ITW-14	Ethylbenzene	130	120	120	210	140	140	ND	150	110	130	110	94	120	120	210	150	97	200	120	160	160	120	120	*	
ITW-14	Total Xylenes	468	345	395	624	389	444	ND	470	320	440	330	270	320	350	620	470	280	640	380	470	480	380	380	*	
ITW-14	Acenaphthene	170	66	34	36	240	77	4.8	60	ND	ND	ND	ND	ND	ND	23	250	ND	ND	ND	ND	17	ND	ND	260	
ITW-14	Acenaphthylene	1000	440	ND	76	1000	370	83	ND	ND	ND	420	ND	ND	ND	480	610	320	240	**4900	ND	380	260	130	130	
ITW-14	Anthracene	44	12	ND	9.1	76	0.30	2.7	ND	ND	ND	26.0	3.2	3.0	3.0	5.1	ND	ND	ND	ND	ND	ND	ND	ND	1310	
ITW-14	Benzo (a) anthracene	180	51	ND	3.8	ND	ND	ND	ND	ND	ND	ND	2.8	3.4	1.0	2.2	ND	ND	3.4	**100	0.2	ND	ND	ND	PAH	
ITW-14	Benzo (a) pyrene	7.3	1.1	ND	ND	17	ND	ND	ND	ND	ND	ND	4.6	5.7	1.8	3.7	ND	ND	0.57	**45	ND	5	ND	ND	PAH	
ITW-14	Benzo (b) fluoranthene	60	4.8	ND	ND	120	75	ND	ND	ND	ND	ND	ND	ND	1.3	23	120	ND	27	**1300	1.2	15	13	PAH		
ITW-14	Benzo (g,h,i) perylene	ND	ND	ND	ND	8.1	3.8	ND	ND	ND	ND	ND	11.0	10.0	2.3	12.0	ND	ND	3.6	**300	ND	ND	ND	ND	*	
ITW-14	Benzo (k) flouranthene	ND	ND	ND	ND	24	16	ND	ND	ND	ND	ND	9.5	11	2.6	9.5	ND	ND	8.4	**320	ND	ND	ND	ND	PAH	
ITW-14	Chrysene	260	56	ND	4	ND	28	ND	ND	900	ND	170	5.7	ND	4.7	14.0	ND	ND	41	**1500	4	ND	16	PAH		
ITW-14	Dibenzo (a,h) anthracene	ND	ND	ND	ND	ND	ND	ND	ND	ND	ND	ND	3.3	3.8	3.6	6.2	ND	ND	ND	**120	ND	ND	ND	ND	PAH	
ITW-14	Indeno(1,2,3-cd)pyrene	ND	ND	ND	ND	34	24	ND	ND	ND	ND	ND	0.7	0.73	ND	3	ND	ND	4	**250	ND	ND	ND	ND	PAH	
ITW-14	Fluoranthene	120	52	ND	17	ND	260	ND	ND	ND	ND	ND	140	180	60	ND	500	ND	190	**10000	19	150	79	*		
ITW-14	Fluorene	230	99	ND	20	350	260	20	ND	ND	ND	ND	ND	ND	52.0	67.0	140	ND	61	**2400	ND	71	36	323		

Appendix D

**Summary of Recent Post-Remedial Action Groundwater Data  
Eastern Site, Gainesville, Florida**

WELL DESIGNATION	PARAMETERS	Mar-03	Jun-03	Sep-03	Dec-03	Mar-04	Jun-04	Sep-04	Dec-04	Mar-05	Jun-05	Sep-05	Dec-05	Mar-06	Jun-06	Sep-06	Dec-06	Mar-07	Jun-07	Sep-07	Dec-07	Mar-08	Jun-08	ROD cleanup goal
ITW-14	Naphthalene	520	310	460	200	930	1000	170	530	ND	ND	400	ND	ND	210	230	250	260	250	**3000	120	200	260	18
ITW-14	Phenanthrene	190	43	42	69	480	240	20	120	210	ND	140	ND	ND	11	20	ND	ND	30	**1400	ND	29	15	130
ITW-14	Pyrene	7.3	11	ND	13	ND	24	ND	ND	ND	ND	ND	23	23	8.8	12	260	ND	ND	ND	ND	22	ND	130
ITW-14	1- Methylnaphthalene	300	130	300	140	410	230	41	350	ND	ND	170	ND	ND	110	150	310	83	160	**4300	36	170	150	*
ITW-14	2- Methylnaphthalene	180	150	220	200	1200	690	60	470	ND	ND(J)	250	ND	ND	91	100	200	97	120	**4200	60	80	130	*
ITW-14	Total Potentially Carcinogenic PAHs	507.3	112.9	ND	7.8	195	143	0	0	900	0	170	26.6	24.6	15	61.3	120	0	84.07	0	5.1	20	29	0.003
ITW-14	Phenol	ND	140	ND	280	ND	1100	ND	750	ND	290	ND	ND	ND	220	640	520	ND	ND	ND	ND	ND	ND	2,630
ITW-14	2,4- Dimethylphenol	1800	1900	4700	2000	8400	ND	2600	4600	1800	4400	1900	2700	3000	4300	4800	4900	11000	3900	1700	2600	3900	6100	*
ITW-14	2- Methylphenol	NS	NS	NS	NS	NS	NS	NS	NS	1800	2200	640	NS	NS	NS	NS	NS	NS	NS	NS	NS	NS	NS	*
ITW-14	3&4- Methylphenol	NS	NS	NS	NS	NS	NS	NS	NS	3500	2700	1000	NS	NS	NS	NS	NS	NS	NS	NS	NS	NS	NS	*
ITW-14	Arsenic	21	16	14	15	12	ND	11	ND	ND	ND	ND	ND	ND	ND	ND	ND	ND	ND	ND	ND	ND	ND	50
ITW-14	Chromium	ND	ND	ND	ND	ND	ND	ND	ND	ND	ND	ND	ND	ND	ND	ND	ND	ND	ND	ND	ND	ND	ND	*100
WMW-17E	Benzene	ND	ND	ND	ND	ND	ND	ND	ND	ND	ND	ND	ND	ND	ND	ND	ND	ND	ND	ND	ND	ND	ND	1
WMW-17E	Ethylbenzene	ND	ND	ND	ND	ND	ND	ND	ND	ND	ND	ND	ND	ND	ND	ND	ND	ND	ND	ND	ND	1.1	ND	*
WMW-17E	Total Xylenes	ND	ND	ND	ND	ND	ND	ND	ND	ND	ND	ND	ND	ND	ND	ND	ND	ND	ND	ND	ND	3.4	ND	*
WMW-17E	Acenaphthene	ND	ND	0.37	0.26	ND	0.30	ND	ND	ND	ND	ND	ND	ND	ND	ND	ND	ND	ND	ND	ND	ND	ND	260
WMW-17E	Acenaphthylene	ND	ND	ND	ND	0.14	0.48	ND	ND	ND	ND	ND	ND	ND	ND	ND	ND	2.3	2.5	ND	ND	5.7	ND	130
WMW-17E	Anthracene	ND	ND	ND	ND	ND	0.010	ND	ND	ND	ND	ND	ND	ND	ND	ND	ND	ND	ND	ND	ND	ND	ND	1,310
WMW-17E	Fluorene	ND	ND	ND	ND	ND	ND	ND	ND	ND	ND	ND	ND	ND	ND	ND	ND	ND	ND	ND	ND	ND	ND	323
WMW-17E	Naphthalene	ND	ND	ND	ND	ND	0.40	ND	ND	ND	ND	ND	ND	ND	ND	ND	ND	ND	ND	ND	ND	2.6	2.5	18
WMW-17E	Phenanthrene	ND	ND	ND	ND	ND	ND	ND	ND	ND	ND	ND	ND	ND	ND	ND	ND	ND	ND	ND	ND	ND	ND	130
WMW-17E	Pyrene	ND	ND	ND	ND	ND	ND	ND	ND	ND	ND	ND	ND	ND	ND	ND	ND	ND	ND	ND	ND	ND	ND	130
WMW-17E	Total Potentially Carcinogenic PAHs	ND	ND	ND	ND	ND	ND	ND	ND	ND	ND	ND	ND	ND	ND	ND	ND	ND	ND	ND	ND	ND	ND	0.003
WMW-17E	1- Methylnaphthalene	ND	ND	ND	ND	ND	0.089	ND	ND	ND	ND	ND	ND	ND	ND	ND	ND	ND	ND	ND	ND	1.3	2	*
WMW-17E	2- Methylnaphthalene	ND	ND	ND	ND	ND	0.32	ND	ND	ND	ND	ND	ND	ND	ND	ND	ND	ND	ND	ND	ND	ND	ND	*
WMW-17E	2,4- Dimethylphenol	ND	ND	ND	ND	ND	ND	ND	ND	ND	ND	ND	ND	ND	ND	ND	ND	ND	ND	ND	ND	ND	ND	*
WMW-17E	PCP	ND	ND	ND	ND	ND	ND	ND	ND	ND	ND	ND	ND	ND	ND	ND	ND	ND	ND	ND	ND	ND	ND	0.1
WMW-17E	Phenol	ND	ND	ND	ND	ND	ND	ND	ND	ND	ND	ND	ND	ND	ND	ND	ND	ND	ND	ND	ND	ND	ND	2,630
WMW-17E	Chromium	ND	ND	ND	ND	ND	ND	ND	ND	ND	ND	ND	ND	ND	12	11	55	ND	ND	ND	ND	ND	ND	*100
WMW-18E	Benzene	ND	ND	ND	ND	ND	ND	ND	ND	ND	ND	ND	ND	ND	ND	ND	ND	ND	ND	ND	ND	ND	ND	1
WMW-18E	Ethylbenzene	ND	ND	ND	ND	ND	ND	ND	ND	ND	ND	ND	ND	ND	ND	ND	ND	ND	ND	ND	ND	ND	ND	*
WMW-18E	Total Xylenes	ND	ND	ND	ND	ND	ND	ND	ND	ND	ND	ND	ND	ND	ND	ND	ND	ND	ND	ND	ND	ND	ND	*
WMW-18E	Acenaphthene	ND	ND	ND	ND	ND	0.056	0.12	ND	ND	ND	ND	ND	ND	ND	ND	ND	ND	ND	ND	ND	ND	ND	260
WMW-18E	Acenaphthylene	ND	ND	ND	ND	ND	ND	ND	ND	ND	ND	ND	ND	ND	ND	ND	ND	ND	ND	ND	ND	ND	ND	130
WMW-18E	Benzo(b)flouranthene	ND	ND	ND	ND	ND	0.0047	ND	ND	ND	ND	ND	ND	ND	ND	ND	ND	ND	ND	ND	ND	ND	ND	PAH
WMW-18E	Fluorene	ND	ND	ND	ND	ND	ND	ND	ND	ND	ND	ND	ND	ND	ND	ND	ND	ND	ND	ND	ND	ND	ND	323
WMW-18E	Naphthalene	ND	ND	ND	ND	ND	ND	ND	ND	ND	ND	ND	ND	ND	ND	ND	ND	ND	ND	ND	ND	ND	ND	18
WMW-18E	Phenanthrene	ND	ND	ND	ND	ND	0.029	ND	ND	ND	ND	ND	ND	ND	ND	ND	ND	ND	ND	ND	ND	ND	ND	130
WMW-18E	Pyrene	ND	ND	ND	ND	ND	ND	ND	ND	ND	ND	ND	ND	ND	ND	ND	ND	ND	ND	ND	ND	ND	ND	130
WMW-18E	Total Potentially Carcinogenic PAHs	ND	ND	ND	ND	ND	0.0047	ND	ND	ND	ND	ND	ND	ND	ND	ND	ND	ND	ND	ND	ND	ND	ND	0.003
WMW-18E	1- Methylnaphthalene	ND	ND	ND	ND	ND	0.14	ND	ND	ND	ND	ND	ND	ND	ND	ND	ND	ND	ND	ND	ND	ND	ND	*
WMW-18E	2- Methylnaphthalene	ND	ND	ND	ND	ND	0.28	ND	ND	ND	ND	ND	ND	ND	ND	ND	ND	ND	ND	ND	ND	ND	ND	*
WMW-18E	PCP	ND	ND	ND	ND	ND	ND	ND	ND	ND	ND	ND	ND	ND	ND	ND	ND	ND	ND	ND	ND	ND	ND	0.1
WMW-18E	2,4- Dimethylphenol	ND	ND	14	ND	ND	ND	ND	ND	ND	ND	ND	ND	ND	ND	ND	ND	ND	ND	ND	ND	ND	ND	*
WMW-18E	Chromium	66	ND	12	12	12	21	ND	10	17	13	10	17	73	70	170	220	ND	ND	ND	ND	ND	ND	*100
WMW-18E	Arsenic	ND	ND	ND	ND	ND	ND	ND	ND	ND	ND	ND	ND	ND	ND	14	20	ND	ND	ND	ND	ND	ND	50
ESE-002	Benzene	ND	ND	ND	2	ND	ND	ND	ND	2.3	ND	ND	ND	ND	ND	ND	ND	ND	ND	ND	ND	ND	ND	1
ESE-002	Ethylbenzene	ND	ND	ND	ND	ND	ND	ND	ND	ND	ND	ND	ND	ND	ND	ND	ND	ND	ND	ND	ND	ND	ND	*
ESE-002	Total Xylenes	2	1	ND	3.3	2	ND	ND	3.1	5.2	ND	ND	6.8	ND	ND	ND	ND	ND	ND	ND	ND	ND	ND	*
ESE-002	Acenaphthene	4.8	18	10	16	64	0.50	35	18	41	ND	24	5	2.7	ND	3	16	ND	2	28	ND	ND	20	260
ESE-002	Acenaphthylene	ND	ND	ND	ND	1.4	ND	ND	ND	ND	ND	ND	ND	ND	ND	ND	ND	ND	ND	ND	ND	ND	ND	130
ESE-002	Anthracene	0.55	1.8	0.91	1.0	1.3	0.015	1.1	2.0	ND	ND	ND	0.7	ND	ND	ND	ND	ND	ND	5.7	2.8	ND	2.3	1,310
ESE-002	Benzo(a)anthracene	ND	ND	ND	ND	0.034	ND	ND	ND	ND	ND	ND	ND	ND	ND	ND	ND	ND	ND	0.23	0.19	ND	ND	PAH
ESE-002	Chrysene	ND	ND	ND	ND	0.057	ND	0.021	ND	ND	ND	ND	ND	ND	ND	ND	ND	ND	ND	ND	ND	ND	ND	PAH
ESE-002	Fluoranthene	3.8	9.4	6.2	5.7	9.8	ND	7.3	8.2	ND	ND	8.5	5.6	4.7	5.3	6.6	ND	4.7	2.6	ND	18	9	9.1	*
ESE-002	Fluorene	4.9	12.0	8.4	14	54	1.1	30.0	12.0	35.0	ND	22	4.5	3.6	7.8	2.1	3.8	2.3	1.5	34	ND	ND	11	323

Appendix D

Summary of Recent Post-Remedial Action Groundwater Data  
Eastern Site, Gainesville, Florida

WELL DESIGNATION	PARAMETERS	Mar-03	Jun-03	Sep-03	Dec-03	Mar-04	Jun-04	Sep-04	Dec-04	Mar-05	Jun-05	Sep-05	Dec-05	Mar-06	Jun-06	Sep-06	Dec-06	Mar-07	Jun-07	Sep-07	Dec-07	Mar-08	Jun-08	ROD cleanup goal
ESE-002	Naphthalene	1.8	5.6	3	10	65	ND	ND	6.2	ND	ND	ND	3	ND	ND	ND	ND	ND	0.93	ND	ND	ND	2.6	18
ESE-002	Phenanthrene	4.7	34.0	7.5	18.0	38.0	0.035	37	24	36	11	15	4	3.5	4.8	ND	ND	ND	ND	10	ND	ND	21	130
ESE-002	Pyrene	1.8	3.3	4.1	3.1	3.1	ND	ND	4.4	ND	ND	ND	3.6	2.5	2.5	2.7	2.6	1.6	1.5	4.8	11	3.9	4.2	130
ESE-002	1-Methylnaphthalene	1.1	3.4	2.3	3.9	30	0.22	ND	4.1	ND	ND	ND	1.6	ND	3.4	ND	7.5	ND	ND	ND	ND	ND	2.4	*
ESE-002	2-Methylnaphthalene	5.1	14.0	3.7	8.2	110.0	1.3	6.0	4.0	ND	ND	48	15	ND	14	4.7	14	ND	ND	ND	ND	ND	11	*
ESE-002	Total Potentially Carcinogenic PAHs	ND	ND	ND	ND	0.091	ND	0.021	ND	ND	ND	ND	ND	ND	ND	ND	ND	ND	ND	0.23	0.19	0	0	0.003
ESE-002	Phenol	ND	ND	ND	ND	ND	ND	ND	ND	ND	ND	ND	ND	ND	ND	ND	ND	ND	ND	ND	ND	ND	ND	2,630
ESE-002	2,4- Dimethylphenol	12	ND	ND	12	ND	ND	ND	ND	13	ND	ND	22	ND	ND	ND	ND	ND	ND	ND	ND	ND	ND	*
ESE-002	Chromium	ND	ND	ND	ND	ND	ND	ND	12	ND	ND	ND	ND	ND	10	ND	21	ND	ND	ND	ND	ND	ND	*100
ESE-004	Benzene	ND	ND	ND	ND	ND	ND	ND	ND	ND	ND	ND	ND	ND	ND	ND	ND	ND	ND	ND	ND	ND	ND	1
ESE-004	Ethylbenzene	ND	2.2	1.3	2.2	1.7	1.6	ND	2.0	1.3	1.8	1.3	ND	ND	ND	ND	ND	ND	ND	ND	ND	ND	ND	*
ESE-004	Acenaphthylene	ND	ND	ND	ND	ND	ND	ND	ND	ND	ND	ND	ND	ND	ND	ND	ND	ND	ND	ND	ND	ND	ND	130
ESE-004	Anthracene	ND	ND	ND	ND	ND	ND	ND	ND	ND	ND	ND	ND	ND	ND	ND	ND	ND	ND	ND	ND	ND	ND	1,310
ESE-004	Fluorene	ND	ND	ND	ND	ND	ND	ND	ND	ND	ND	ND	ND	ND	ND	ND	ND	ND	ND	ND	ND	ND	ND	323
ESE-004	Naphthalene	ND	ND	ND	0.38	ND	0.48	ND	ND	ND	ND	ND	ND	ND	ND	ND	ND	ND	ND	ND	ND	ND	ND	18
ESE-004	Phenanthrene	ND	ND	ND	ND	ND	ND	ND	ND	ND	ND	ND	ND	ND	ND	ND	ND	ND	ND	ND	ND	ND	ND	130
ESE-004	2,4- Dimethylphenol	ND	ND	13	ND	ND	ND	ND	ND	ND	ND	ND	ND	14	ND	ND	ND	ND	ND	ND	ND	ND	ND	*
ESE-004	Phenol	ND	ND	ND	ND	ND	ND	ND	ND	ND	ND	ND	ND	ND	ND	ND	ND	ND	ND	ND	ND	ND	ND	2,630
ESE-004	Chromium	ND	ND	ND	ND	ND	ND	ND	ND	ND	ND	ND	ND	ND	ND	12	10	ND	ND	ND	ND	ND	ND	*100
ESE-007	Benzene	2.7	2.6	1.8	1.8	1.2	8	ND	ND	2.3	3.1	1.8	ND	1.1	4.7	3	11	9.5	20	14	12	9.3	11	1
ESE-007	Toluene	9.5	26	6.8	3.8	3.3	78	62	25	22	33	7.8	43	11	26	2.2	190	210	290	190	160	120	170	*
ESE-007	Ethylbenzene	42	8.2	6.3	4.9	4	24	ND	10	7.7	11	6	11	3.9	13	1.5	29	31	56	37	34	31	40	*
ESE-007	Total Xylenes	10.4	9.4	5.3	4.9	4	20.7	ND	ND	7.6	10	5.6	10	3.9	14	4.5	31	30	61	44	39	34	44	*
ESE-007	Acenaphthene	ND	ND	ND	ND	ND	ND	0.14	ND	ND	ND(J)	ND	ND	ND	ND	ND	ND	ND	ND	ND	ND	ND	ND	260
ESE-007	Acenaphthylene	ND	1.5	ND	ND	ND	1.2	1.8	ND	ND	1.3(J)	ND	ND	ND	ND	1.5	ND	ND	ND	ND	ND	ND	ND	130
ESE-007	Anthracene	ND	ND	ND	ND	ND	ND	ND	ND	ND	ND	ND	ND	ND	ND	ND	ND	ND	ND	ND	ND	ND	ND	1,310
ESE-007	Fluorene	ND	ND	ND	ND	ND	ND	ND	ND	ND	ND	ND	ND	ND	ND	ND	ND	ND	ND	ND	ND	ND	ND	323
ESE-007	Naphthalene	2.6	2.2	3.8	2.3	1.5	4.2	3.5	5.2	1.9	2.3	2.3	ND	ND	1.6	1.6	ND	4.5	10	12	6.6	3.7	7.5	18
ESE-007	Phenanthrene	ND	ND	ND	ND	ND	ND	ND	ND	ND	ND	ND	ND	ND	ND	ND	ND	ND	ND	ND	ND	ND	ND	130
ESE-007	1-Methylnaphthalene	ND	ND	ND	0.58	ND	ND	ND	ND	ND	ND	ND	ND	ND	ND	ND	ND	0.93	2.5	ND	ND	ND	1.9	*
ESE-007	2-Methylnaphthalene	ND	ND	ND	0.54	ND	ND	ND	ND	ND	ND	ND	ND	ND	ND	ND	ND	ND	1.3	ND	ND	ND	1.4	*
ESE-007	Total Potentially Carcinogenic PAHs	ND	ND	ND	ND	ND	ND	ND	ND	ND	ND	ND	ND	ND	ND	ND	ND	ND	ND	ND	ND	ND	ND	0.003
ESE-007	Phenol	680	390	52	28	33	650	1000	290	40	330	130	490	230	270	58	1400	<b>3400</b>	1500	2000	1400	390	<b>2700</b>	<b>2,630</b>
ESE-007	2,4- Dimethylphenol	ND	80	62	40	41	280	210	ND	35	99	64	95	56	140	36	330	600	520	680	410	230	500	*
ESE-007	2- Methylphenol	NS	NS	NS	NS	NS	NS	NS	NS	15	61	36	67	NS	NS	NS	NS	NS	NS	NS	NS	NS	NS	*
ESE-007	3&4- Methylphenol	NS	NS	NS	NS	NS	NS	NS	NS	79	320	170	360	NS	NS	NS	NS	NS	NS	NS	NS	NS	NS	*
ESE-007	Arsenic	ND	ND	ND	ND	ND	ND	ND	ND	ND	ND	ND	ND	ND	14	ND	20	11	ND	ND	ND	ND	ND	50
ESE-007	Chromium	22	190	1900	1900	87	490	510	240	63	37	24	11	11	110	150	230	ND	ND	ND	ND	ND	ND	*100

All results are in ug/l (micrograms per liter).

ND = Not detected above the MDL.

NS = Not sampled for indicated compound.

\* = No ROD Cleanup Goal for compound. Tested as part of complete scan for tests 8021, 8270 or 8310.

Y = Target compounds were quantified from a secondary dilution due to analyte abundance in the sample.

P = Identification of target analytes using LC methodology is based on retention time. Discretion should be employed during data review and interpretation of results for this target compound.

\*\* = Free-phase product was observed in the groundwater sample collected at ITW-14 during the September 2007 sampling event.

PAH = Included as Total Potentially Carcinogenic PAHs.

Bolded values meet or exceed indicated ROD cleanup goals.