



March 11, 2014

Scott Miller, PG
Remedial Project Manager
Superfund Remedial Branch, Section C
U.S. Environmental Protection Agency, Region 4
61 Forsyth Street SW
Atlanta, GA 30303-8909

VIA EMAIL

Subject: **February 2014 Monthly Progress Report**

Dear Mr. Miller:

On behalf of Beazer East, Inc. (Beazer), attached is the February 2014 Monthly Progress Report for the Koppers portion of the Cabot/Koppers Superfund Site in Gainesville, Florida. If you have any questions or comments, please contact me.

Sincerely,

A handwritten signature in blue ink, appearing to read 'Gregory W. Council'.

Gregory W. Council, P.E.
Principal Engineer

cc: Rusty Kestle, EPA
Kelsey Helton, FDEP
John Mousa, ACEPD
Kristie Williams, City of Gainesville
Yvette Carter, City of Gainesville
Rick Hutton, GRU
Carrie McCoy, Black & Veatch
John Herbert, GeoHydro Consultants
Patricia Cline, Community Technical Advisor
Linda Paul, Koppers, Inc.
Mitchell Brouman, TRMI
Mike Slenska, TRMI
Donna Kopach, TRMI
Jim Erickson, Tetra Tech

**February 2014
MONTHLY PROGRESS REPORT
Cabot/Koppers Superfund Site
Gainesville, Florida**

1. Compliance Actions:

- Beazer's Operation and Maintenance (O&M) Contractor performed routine treatment plant O&M services for the groundwater extraction and pretreatment system.
- Remedial Design activities are presently being conducted.

2. Sampling/Test Results and Data:

- Instantaneous flow rates and totalizer volumes were measured in each extraction well.
- The bi-weekly passive NAPL recovery program continues at Upper Hawthorn monitoring wells: 1.35 gallons of NAPL were removed from Upper Hawthorn wells during the past month (2 recovery events). A total of 561 gallons have been removed since the start of the NAPL recovery program on June 19, 2004. Table 1 provides details of the NAPL recovery volumes by well and date.
- In addition, NAPL was removed from 15 temporary injection points (TIPs) installed in the Former Process Area as part of the In-Situ Geochemical Stabilization (ISGS) program (Table 2). This is a pilot demonstration for full scale design. Heavier than usual staining was observed at TIPs 320N 140E and 300N 260E in February, 2014. These locations will be used in the next recovery event in March. New intermittent NAPL staining was noted at the following TIPs during the 2/25/14 gauging event (they are not recoverable at this time): Drip Track 1, 507N 260E and 200N 220E. Two NAPL recovery events were conducted during the month, resulting in a total of 156.2 gallons removed.
- NAPL was removed from one Surficial Aquifer well and five Upper Hawthorn recovery wells installed in the Former Process Area as part of the ISGS program (Table 3). Two NAPL recovery events were conducted during the month, resulting in 62.4 gallons removed.
- A total of 3,866,922 gallons of groundwater were recovered by the Surficial Aquifer drains and extraction well system (both Surficial Aquifer and UFA) during the past month (system run time of 672 hours). The average recovery rate for the month was approximately 96 gallons per minute (gpm). The recovery for each component is listed below.
 - Surficial Aquifer
 - Perimeter Extraction Wells: 633,125 gallons
 - Former North Lagoon Drain: 413,170 gallons
 - Former Drip Track Drain: 471,480 gallons
 - Former Process Area Drain: 440,320 gallons
 - Former South Lagoon Drain: 431,300 gallons
 - Upper Floridan Extraction Wells
 - FW-6: 17,605 gallons
 - FW-21B: 161,155 gallons
 - FW-31BE: 443,047 gallons
 - FW-32BE: 855,720 gallons

Approximately 325.3 million gallons have been recovered from the Surficial Aquifer extraction wells and four drains since the start of the Surficial Aquifer containment system in January 1995.

For the month, the total volume of water treated and discharged to the GRU wastewater system was 2,484,000 gallons. The remaining portion of the water, from Upper Floridan Aquifer wells, was treated and used for on-Property irrigation.

The Former South Lagoon and Former Process groundwater drain pumps were turned off for approximately 8 hours to pump and clean clarifiers and to treat backwash water.

3. Plans, Reports, Deliverables and Procedures Completed:

- *Remedial Action Work Plan (RAWP) Off-Property Soil Replacement Blocks G and H* was submitted on February 21, 2014.
- Preparation work for Off-Site Soil Replacement Action (on-Property facilities, tree removal, fence removal) conducted February 17-28, 2014.
- Soil sampling of off-Property areas conducted February 19, 2014.
- Surveying at properties in the Stephen Foster Neighborhood.
- Interviews of Stephen Foster neighborhood property owners and residents.
- Periodic maintenance checks and inspections.
- Treatment-plant component maintenance and repair as needed.
- First quarter Total System Effluent (TSE) sampling event February 13, 2014.
- First quarter groundwater sampling February 17-21, 2014.
- Replace EW-3 pump motor.
- Replace pump and flowmeter elements in EW-2.
- Troubleshoot filter feed pump WWTP.
- Repair Filter Feed tank HH alarm wiring.
- Install rebuilt hydraulic pump for filter press.
- Repair caustic metering pump.
- On-property irrigation using treated groundwater from FW-6, FW-21B, FW-31BE, and FW-32BE.
- Remediation agreement proposals sent to property owners north of 29th Ave
- 78 drums of PPE, spent filters, plastic, groundwater treatment sludge, spent carbon, DNAPL and water disposed on February 11, 2014.

4. Upcoming Actions:

- Continuation of landscape surveys and interviews in the Stephen Foster neighborhood.
- RAWPs for Blocks F, E, D and C.
- Off-Property Remedial Action at Blocks G & H, beginning March 4, 2014.
- Off-Property Remedial Action at Block E, beginning March 17, 2014.
- ISGS Pilot Test beginning March 24, 2014 with preparation work the prior week.
- NAPL collection at Upper Hawthorn monitoring wells: bi-weekly.
- NAPL collection at temporary Upper Hawthorn ISGS injection points: bi-weekly.

- Second quarter groundwater sampling event: planned for May 12 - 16, 2014.
- Routine inspection, operation, maintenance, and monitoring.

5. Schedule Status:

- The current remedial design schedule is attached.
- No significant delays were encountered during the reporting period.

6. Plan/Schedule Modifications:

- Minor schedule modifications were made to the schedule submitted last month.

7. Community Involvement:

- Tetra Tech's Community Coordinator has been in touch with many residents and property owners in the Stephen Foster neighborhood, and has been working closely with the city's community coordinators for the Stephen Foster soil replacement work.
- Beazer participated in the community meeting sponsored by the City of Gainesville on February 18, 2014
- Future community involvement activities will be coordinated with EPA.

Table 1. DNAPL Recovery - Hawthorn Group Monitoring Wells

| Well ID | Total Last Month (gal) (2 events) January 2014 | DNAPL Volume (gal) 2/5/2014 | DNAPL Volume (gal) 2/19/2014 | Total This Month (gal) February 2014 |
|------------------|---|--------------------------------|---------------------------------|---|
| HG-9S | Stain | Stain | Stain | 0 |
| HG-10S | Trace | Stain | Stain | 0 |
| HG-10D | Stain | Stain | Stain | 0 |
| HG-11S | 0.7 | 0.4 | 0.3 | 0.3 |
| HG-12S | 0.6 | 0.3 | 0.35 | 0.35 |
| HG-12D | ND | ND | ND | 0 |
| HG-15S | 0.75 | 0.25 | 0.3 | 0.3 |
| HG-16S | Stain | Stain | 0.4 | 0.4 |
| HG-16D | Stain | Stain | Stain | 0 |
| MW-22B | Stain | Stain | Stain | 0 |
| Total | 2.05 | 0.95 | 1.35 | 1.35 |
| Cumulative Total | 559.66 | | | 561.01 |

ND - No DNAPL Detected

Table 2. DNAPL Recovery Temporary Injection Points (TIPs)

| Well ID | Total Last Month (gal) (3 events) January 2014 | DNAPL Volume (gal) 2/11-14/2014 | DNAPL Volume (gal) 2/25-27/2014 | Total This Month (gal) February 2014 |
|--------------|---|------------------------------------|------------------------------------|---|
| 220N 180E | 8.1 | 3.5 | 2.6 | 6.1 |
| 280N 380E | 10.1 | 3.3 | 3.2 | 6.5 |
| 300N 180E | 26 | 10.2 | 9.4 | 19.6 |
| 300N 420E | 9.5 | 3.6 | 3.3 | 6.9 |
| 320N 220E | 10.2 | 3.5 | 3.5 | 7 |
| 320N 300E | 9.3 | 3.5 | 3.1 | 6.6 |
| 340N 340E | 18.8 | 5.6 | 5.7 | 11.3 |
| 360N 280E | 12.6 | 4.5 | 3.5 | 8 |
| 380N 340E | 24.2 | 7.1 | 6.8 | 13.9 |
| 400N 380E | 18.1 | 6 | 6.8 | 12.8 |
| 460N 340E | 7.7 | 2.7 | 2.6 | 5.3 |
| 420N 340E | 56.2 | 21.3 | 24.2 | 45.5 |
| 220N 340E | 2.7 | 1.1 | 1.1 | 2.2 |
| 240N 380E | 4.5 | 1.8 | 1.6 | 3.4 |
| 340N 180E* | NA | 0.3 | 0.8 | 1.1 |
| Total | 218 | 78 | 78.2 | 156.2 |

*340N 180E Started recovery in Feb. 2014

Table 3. DNPL ISGS Recovery Data - DNPL Recovery Wells

| Well ID | Total Last Month (gal) (2 events) January 2014 | DNAPL Volume (gal) 2/6/2014 | DNAPL Volume (gal) 2/19/2014 | Total This Month (gal) February 2014 |
|---------|---|--------------------------------|---------------------------------|---|
| M-38BE | NR | 1.5 | NR | 1.5 |
| M-39BE | NR | NR | NR | NR |
| M-40BE | NR | NR | NR | NR |
| M-41BE | NR | NR | NR | NR |
| M-42BE | NR | NR | NR | NR |
| HG-36SE | 32.6 | 16.5 | 16.5 | 33 |
| HG-37SE | 7 | 3.5 | 3.2 | 6.7 |
| HG-38SE | 10.5 | 5.3 | 5.1 | 10.4 |
| HG-39SE | 5.6 | 2.6 | 2.6 | 5.2 |
| HG-40SE | 6.1 | 2.9 | 2.7 | 5.6 |
| Total | 61.8 | 32.3 | 30.1 | 62.4 |

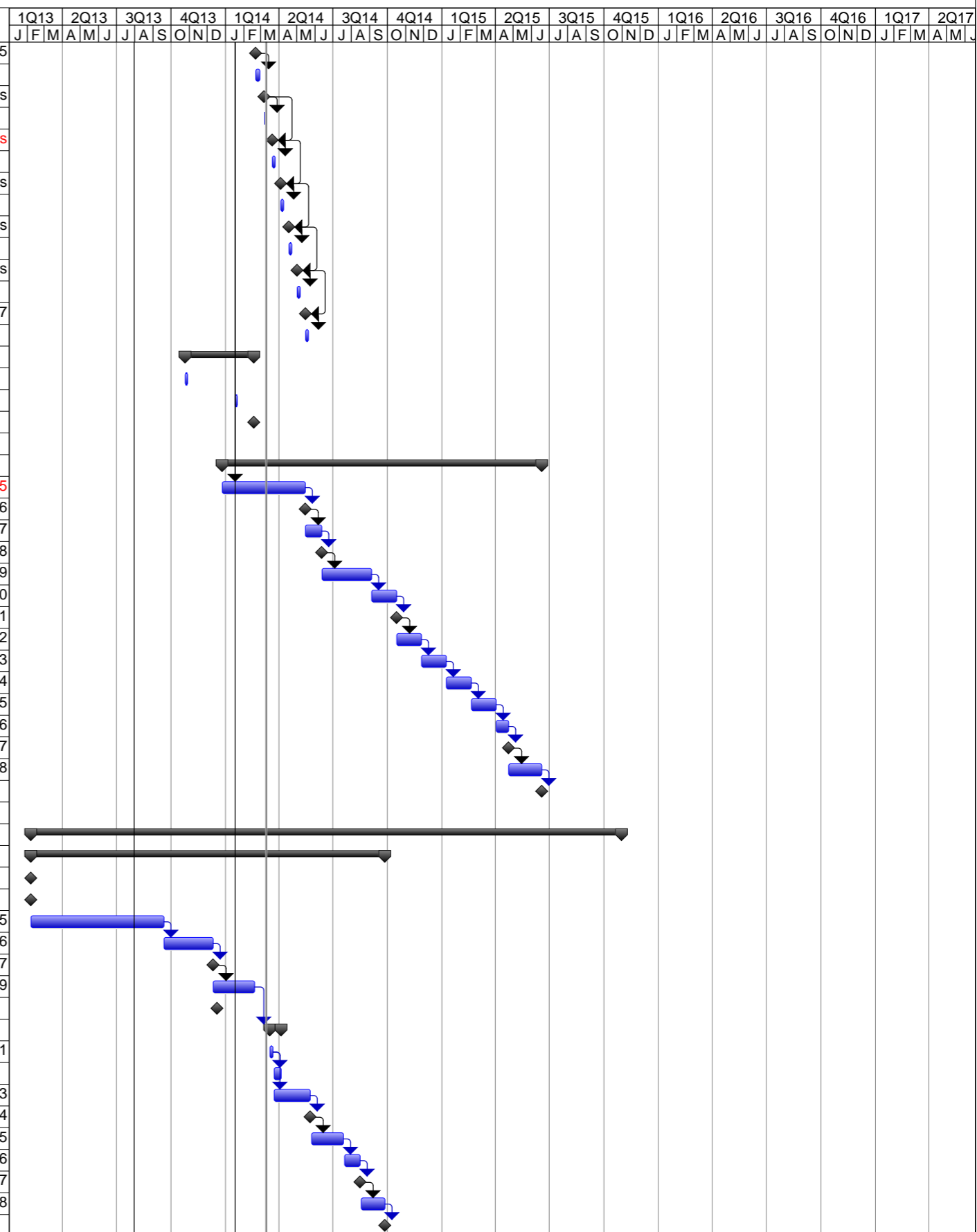
NR - No Recovery

GAINESVILLE REMEDIAL DESIGN

| ID | WBS | Task Name | Duration | Predecessors | Start | Finish | Successors | 1Q13 2Q13 3Q13 4Q13 1Q14 2Q14 3Q14 4Q14 1Q15 2Q15 3Q15 4Q15 1Q16 2Q16 3Q16 4Q16 1Q17 2Q17 | | | | | | | | | | | | | | | | | | | | | | | | | | | | | | | | | |
|----|-------------|---|-----------------|--------------|--------------------|---------------------|----------------|---|---|---|---|---|---|---|---|---|---|---|---|---|---|---|---|---|---|---|---|---|---|---|---|---|---|---|---|---|---|---|---|---|---|
| | | | | | | | | J | F | M | A | M | J | J | A | S | O | N | D | J | F | M | A | M | J | J | A | S | O | N | D | J | F | M | A | M | J | J | A | S | O |
| 1 | | 1 Consent Decree for RD/RA | 23.8 wks | | Thu 2/7/13 | Wed 7/24/13 | | | | | | | | | | | | | | | | | | | | | | | | | | | | | | | | | | | |
| 2 | 1.1 | US DOJ Lodges Donsent Decree with Court | 0 days | | Thu 2/7/13 | Thu 2/7/13 | | | | | | | | | | | | | | | | | | | | | | | | | | | | | | | | | | | |
| 3 | 1.2 | Public Comment on Consent Decree | 4.6 wks | | Wed 2/13/13 | Fri 3/15/13 | | | | | | | | | | | | | | | | | | | | | | | | | | | | | | | | | | | |
| 4 | 1.3 | Beazer Submittal: Project Coordinators, Supervising Contractor, Quality Management Plan | 0 days | | Fri 2/15/13 | Fri 2/15/13 | | | | | | | | | | | | | | | | | | | | | | | | | | | | | | | | | | | |
| 5 | 1.4 | Court Enters Consent Decree Final | 0 days | | Tue 7/9/13 | Tue 7/9/13 | 163 | | | | | | | | | | | | | | | | | | | | | | | | | | | | | | | | | | |
| 6 | 1.5 | EPA Issues Authorization to Proceed with Remedial Design | 0 days | | Wed 7/24/13 | Wed 7/24/13 | 9 | | | | | | | | | | | | | | | | | | | | | | | | | | | | | | | | | | |
| 7 | | | | | | | | | | | | | | | | | | | | | | | | | | | | | | | | | | | | | | | | | |
| 8 | | 2 Remedial Design Work Plan (RDWP) | 22.3 wks | | Wed 7/24/13 | Thu 12/26/13 | | | | | | | | | | | | | | | | | | | | | | | | | | | | | | | | | | | |
| 9 | 2.1 | Prepare RDWP | 43 days | 6 | Wed 7/24/13 | Fri 9/20/13 | 10 | | | | | | | | | | | | | | | | | | | | | | | | | | | | | | | | | | |
| 10 | 2.2 | Beazer Submit RDWP | 0 wks | 9 | Fri 9/20/13 | Fri 9/20/13 | 11,19,18 | | | | | | | | | | | | | | | | | | | | | | | | | | | | | | | | | | |
| 11 | 2.3 | EPA Review and Comment RDWP | 6.8 wks | 10 | Mon 9/23/13 | Thu 11/7/13 | 12 | | | | | | | | | | | | | | | | | | | | | | | | | | | | | | | | | | |
| 12 | 2.4 | Beazer Respond to Comments | 4.3 wks | 11 | Fri 11/8/13 | Mon 12/9/13 | 13 | | | | | | | | | | | | | | | | | | | | | | | | | | | | | | | | | | |
| 13 | 2.5 | Beazer Submit Responses and RDWP Version 2 | 0 wks | 12 | Mon 12/9/13 | Mon 12/9/13 | 14 | | | | | | | | | | | | | | | | | | | | | | | | | | | | | | | | | | |
| 14 | 2.6 | EPA Review | 2.6 wks | 13 | Mon 12/9/13 | Thu 12/26/13 | 15 | | | | | | | | | | | | | | | | | | | | | | | | | | | | | | | | | | |
| 15 | 2.7 | EPA Approval RDWP | 0 wks | 14 | Thu 12/26/13 | Thu 12/26/13 | 126,74 | | | | | | | | | | | | | | | | | | | | | | | | | | | | | | | | | | |
| 16 | | | | | | | | | | | | | | | | | | | | | | | | | | | | | | | | | | | | | | | | | |
| 17 | | 3 Supporting Plans for RD/RA | 32.2 wks | | Fri 9/20/13 | Mon 5/5/14 | | | | | | | | | | | | | | | | | | | | | | | | | | | | | | | | | | | |
| 18 | 3.5 | Beazer Submit Health & Safety Plan | 0 wks | 10 | Fri 9/20/13 | Fri 9/20/13 | | | | | | | | | | | | | | | | | | | | | | | | | | | | | | | | | | | |
| 19 | 3.2 | Materials Management Plan | 5 wks | 10 | Tue 4/1/14 | Mon 5/5/14 | 20FF,21FF,22FF | | | | | | | | | | | | | | | | | | | | | | | | | | | | | | | | | | |
| 20 | 3.6 | Stormwater Management Plan | 5 wks | 19FF | Tue 4/1/14 | Mon 5/5/14 | | | | | | | | | | | | | | | | | | | | | | | | | | | | | | | | | | | |
| 21 | 3.7 | Noise and Dust Control Plan | 5 wks | 19FF | Tue 4/1/14 | Mon 5/5/14 | | | | | | | | | | | | | | | | | | | | | | | | | | | | | | | | | | | |
| 22 | 3.5 | Equipment Decontamination Plan | 5 wks | 19FF | Tue 4/1/14 | Mon 5/5/14 | | | | | | | | | | | | | | | | | | | | | | | | | | | | | | | | | | | |
| 23 | 3.6 | Quality Assurance Project Plan (update) | 4 wks | | Mon 2/24/14 | Fri 3/21/14 | 24 | | | | | | | | | | | | | | | | | | | | | | | | | | | | | | | | | | |
| 24 | 3.7 | Data Management Plan | 3 wks | 23 | Mon 3/24/14 | Fri 4/11/14 | | | | | | | | | | | | | | | | | | | | | | | | | | | | | | | | | | | |
| 25 | | | | | | | | | | | | | | | | | | | | | | | | | | | | | | | | | | | | | | | | | |
| 26 | | 4 Off-Property Soil Replacement (OU-5): DESIGN TRACK #1 | 55.2 wks | | Tue 4/30/13 | Tue 5/20/14 | | | | | | | | | | | | | | | | | | | | | | | | | | | | | | | | | | | |
| 27 | 4.1 | Initial Identification of Remediation & Evaluation Parcels | 0 wks | | Tue 4/30/13 | Tue 4/30/13 | | | | | | | | | | | | | | | | | | | | | | | | | | | | | | | | | | | |
| 28 | 4.2 | Obtain Access Agreements for Surveys & Sampling | 23 wks | | Thu 5/2/13 | Wed 10/9/13 | | | | | | | | | | | | | | | | | | | | | | | | | | | | | | | | | | | |
| 29 | 4.3 | Community Information Session | 0 wks | | Thu 5/30/13 | Thu 5/30/13 | | | | | | | | | | | | | | | | | | | | | | | | | | | | | | | | | | | |
| 30 | 4.4 | Sampling for Refinement of Remediation Parcels (July 2013) | 18.8 wks | | Fri 7/19/13 | Wed 11/27/13 | | | | | | | | | | | | | | | | | | | | | | | | | | | | | | | | | | | |
| 31 | 4.4.1 | Proposal for Sampling (July 2013) | 0 wks | | Fri 7/19/13 | Fri 7/19/13 | | | | | | | | | | | | | | | | | | | | | | | | | | | | | | | | | | | |
| 32 | 4.4.2 | EPA Approval of Sampling | 0 wks | | Mon 7/22/13 | Mon 7/22/13 | | | | | | | | | | | | | | | | | | | | | | | | | | | | | | | | | | | |
| 33 | 4.4.3 | Sample Collection | 2 days | | Tue 7/30/13 | Wed 7/31/13 | 34 | | | | | | | | | | | | | | | | | | | | | | | | | | | | | | | | | | |
| 34 | 4.4.4 | Analysis and Validation | 6.2 wks | 33 | Thu 8/1/13 | Thu 9/12/13 | 35 | | | | | | | | | | | | | | | | | | | | | | | | | | | | | | | | | | |
| 35 | 4.4.5 | Data Summary Report | 10.8 wks | 34 | Fri 9/13/13 | Wed 11/27/13 | 48,36 | | | | | | | | | | | | | | | | | | | | | | | | | | | | | | | | | | |
| 36 | 4.4.6 | Beazer Submit Data Summary and Fingerprinting Report | 0 wks | 35 | Wed 11/27/13 | Wed 11/27/13 | | | | | | | | | | | | | | | | | | | | | | | | | | | | | | | | | | | |
| 37 | 4.5 | Pilot Home Soil Replacement | 10.3 wks | | Thu 9/26/13 | Fri 12/6/13 | | | | | | | | | | | | | | | | | | | | | | | | | | | | | | | | | | | |
| 38 | 4.5.1 | Survey | 1.8 wks | | Thu 9/26/13 | Tue 10/8/13 | 39 | | | | | | | | | | | | | | | | | | | | | | | | | | | | | | | | | | |
| 39 | 4.5.2 | Design & Interview | 3 wks | 38 | Wed 10/9/13 | Tue 10/29/13 | | | | | | | | | | | | | | | | | | | | | | | | | | | | | | | | | | | |
| 40 | 4.5.3 | Borrow Sampling | 2 wks | | Thu 10/10/13 | Wed 10/23/13 | 41 | | | | | | | | | | | | | | | | | | | | | | | | | | | | | | | | | | |
| 41 | 4.5.4 | Sample Analysis | 2 wks | 40 | Thu 10/24/13 | Wed 11/6/13 | 43 | | | | | | | | | | | | | | | | | | | | | | | | | | | | | | | | | | |
| 42 | 4.5.5 | Pilot Plan | 6 wks | | Thu 9/26/13 | Wed 11/6/13 | 43 | | | | | | | | | | | | | | | | | | | | | | | | | | | | | | | | | | |
| 43 | 4.5.6 | Submit Pilot Plan | 0 wks | 42,41 | Wed 11/6/13 | Wed 11/6/13 | 44 | | | | | | | | | | | | | | | | | | | | | | | | | | | | | | | | | | |
| 44 | 4.5.7 | Review | 1 wk | 43 | Thu 11/7/13 | Wed 11/13/13 | 45 | | | | | | | | | | | | | | | | | | | | | | | | | | | | | | | | | | |
| 45 | 4.5.8 | EPA Approval of Pilot Plan | 0 wks | 44 | Wed 11/13/13 | Wed 11/13/13 | 47,46FF | | | | | | | | | | | | | | | | | | | | | | | | | | | | | | | | | | |
| 46 | 4.5.9 | Permitting | 2 wks | 45FF | Thu 10/31/13 | Wed 11/13/13 | 47 | | | | | | | | | | | | | | | | | | | | | | | | | | | | | | | | | | |
| 47 | 4.5.10 | Pilot Implementation | 3.3 wks | 46,45 | Thu 11/14/13 | Fri 12/6/13 | | | | | | | | | | | | | | | | | | | | | | | | | | | | | | | | | | | |
| 48 | 4.6 | Remedial Design Details | 12.4 wks | 35 | Thu 11/28/13 | Fri 2/21/14 | 49 | | | | | | | | | | | | | | | | | | | | | | | | | | | | | | | | | | |
| 49 | 4.7 | Submit RD Details | 0 wks | 48 | Fri 2/21/14 | Fri 2/21/14 | 50 | | | | | | | | | | | | | | | | | | | | | | | | | | | | | | | | | | |
| 50 | 4.8 | Review and Comment | 0.8 wks | 49 | Mon 2/24/14 | Thu 2/27/14 | | | | | | | | | | | | | | | | | | | | | | | | | | | | | | | | | | | |
| 51 | 4.9 | Surveying & Interviews | 30 wks | | Mon 9/16/13 | Fri 4/11/14 | | | | | | | | | | | | | | | | | | | | | | | | | | | | | | | | | | | |
| 52 | 4.10 | Parcel Designs & Remediation Agreements | 17 wks | | Mon 12/2/13 | Fri 3/28/14 | | | | | | | | | | | | | | | | | | | | | | | | | | | | | | | | | | | |
| 53 | 4.11 | Final Design and RAWP | 12.6 wks | | Fri 2/21/14 | Tue 5/20/14 | | | | | | | | | | | | | | | | | | | | | | | | | | | | | | | | | | | |

GAINESVILLE REMEDIAL DESIGN

| ID | WBS | Task Name | Duration | Predecessors | Start | Finish | Successors | 1Q13 | 2Q13 | 3Q13 | 4Q13 | 1Q14 | 2Q14 | 3Q14 | 4Q14 | 1Q15 | 2Q15 | 3Q15 | 4Q15 | 1Q16 | 2Q16 | 3Q16 | 4Q16 | 1Q17 | 2Q17 | | | | | | | | | | | | | | | | |
|-----|---------|--|------------------|--------------|---------------------|---------------------|---------------|------|------|------|------|------|------|------|------|------|------|------|------|------|------|------|------|------|------|---|---|---|---|---|---|---|---|---|---|---|---|---|---|---|---|
| | | | | | | | | J | F | M | A | M | J | J | A | S | O | N | D | J | F | M | A | M | J | J | A | S | O | N | D | J | F | M | A | M | J | J | A | S | O |
| 54 | 4.11.1 | Submit Pre-Final Designs & RAWP: Blocks G & H | 0 wks | | Fri 2/21/14 | Fri 2/21/14 | 55 | | | | | | | | | | | | | | | | | | | | | | | | | | | | | | | | | | |
| 55 | 4.11.2 | Final Design and RAWP Approval: Blocks E-H | 1 wk | 54 | Fri 2/21/14 | Thu 2/27/14 | | | | | | | | | | | | | | | | | | | | | | | | | | | | | | | | | | | |
| 56 | 4.11.3 | Submit Pre-Final Designs & RAWP: Blocks E&F | 0 wks | | Fri 3/7/14 | Fri 3/7/14 | 57,58FF+2 wks | | | | | | | | | | | | | | | | | | | | | | | | | | | | | | | | | | |
| 57 | 4.11.4 | Final Design and RAWP Approval: Blocks E&F | 1 day | 56 | Fri 3/7/14 | Fri 3/7/14 | | | | | | | | | | | | | | | | | | | | | | | | | | | | | | | | | | | |
| 58 | 4.11.5 | Submit Pre-Final Designs & RAWP: Block D | 0 wks | 56FF+2 wks | Thu 3/20/14 | Thu 3/20/14 | 59,60FF+2 wks | | | | | | | | | | | | | | | | | | | | | | | | | | | | | | | | | | |
| 59 | 4.11.6 | Final Design and RAWP Approval: Block D | 0.6 wks | 58 | Fri 3/21/14 | Tue 3/25/14 | | | | | | | | | | | | | | | | | | | | | | | | | | | | | | | | | | | |
| 60 | 4.11.7 | Submit Pre-Final Designs & RAWP: Block C | 0 wks | 58FF+2 wks | Thu 4/3/14 | Thu 4/3/14 | 61,62FF+2 wks | | | | | | | | | | | | | | | | | | | | | | | | | | | | | | | | | | |
| 61 | 4.11.8 | Final Design and RAWP Approval: Block C | 0.6 wks | 60 | Fri 4/4/14 | Tue 4/8/14 | | | | | | | | | | | | | | | | | | | | | | | | | | | | | | | | | | | |
| 62 | 4.11.9 | Submit Pre-Final Designs & RAWP: Block B | 0 wks | 60FF+2 wks | Thu 4/17/14 | Thu 4/17/14 | 63,64FF+2 wks | | | | | | | | | | | | | | | | | | | | | | | | | | | | | | | | | | |
| 63 | 4.11.10 | Final Design and RAWP Approval: Block B | 0.6 wks | 62 | Fri 4/18/14 | Tue 4/22/14 | | | | | | | | | | | | | | | | | | | | | | | | | | | | | | | | | | | |
| 64 | 4.11.11 | Submit Pre-Final Designs & RAWP: Block A | 0 wks | 62FF+2 wks | Thu 5/1/14 | Thu 5/1/14 | 65,66FF+2 wks | | | | | | | | | | | | | | | | | | | | | | | | | | | | | | | | | | |
| 65 | 4.11.12 | Final Design and RAWP Approval: Block A | 0.6 wks | 64 | Fri 5/2/14 | Tue 5/6/14 | | | | | | | | | | | | | | | | | | | | | | | | | | | | | | | | | | | |
| 66 | 4.11.13 | Submit Pre-Final Designs & RAWP: Block I | 0 wks | 64FF+2 wks | Thu 5/15/14 | Thu 5/15/14 | 67 | | | | | | | | | | | | | | | | | | | | | | | | | | | | | | | | | | |
| 67 | 4.11.14 | Final Design and RAWP Approval: Block I | 0.6 wks | 66 | Fri 5/16/14 | Tue 5/20/14 | | | | | | | | | | | | | | | | | | | | | | | | | | | | | | | | | | | |
| 68 | 4.12 | Community Meetings | 16.4 wks | | Fri 10/25/13 | Tue 2/18/14 | | | | | | | | | | | | | | | | | | | | | | | | | | | | | | | | | | | |
| 69 | 4.12.1 | Community Meeting: Landscaping Workshop - City (Oct 26) | 2 days | | Fri 10/25/13 | Mon 10/28/13 | | | | | | | | | | | | | | | | | | | | | | | | | | | | | | | | | | | |
| 70 | 4.12.2 | Community Meeting (Jan 18 2014) | 2 days | | Fri 1/17/14 | Mon 1/20/14 | | | | | | | | | | | | | | | | | | | | | | | | | | | | | | | | | | | |
| 71 | 4.12.3 | Community Meeting (Feb 18 2014) | 0 wks | | Tue 2/18/14 | Tue 2/18/14 | | | | | | | | | | | | | | | | | | | | | | | | | | | | | | | | | | | |
| 72 | | | | | | | | | | | | | | | | | | | | | | | | | | | | | | | | | | | | | | | | | |
| 73 | 5 | Cutoff Wall and Stormwater Controls: DESIGN TRACK #2 | 77 wks | | Thu 12/26/13 | Thu 6/18/15 | | | | | | | | | | | | | | | | | | | | | | | | | | | | | | | | | | | |
| 74 | 5.1 | Pre-Design Work Plan | 20 wks | 15 | Thu 12/26/13 | Thu 5/15/14 | 75 | | | | | | | | | | | | | | | | | | | | | | | | | | | | | | | | | | |
| 75 | 5.2 | Submit Pre-Design Work Plan | 0 wks | 74 | Thu 5/15/14 | Thu 5/15/14 | 76 | | | | | | | | | | | | | | | | | | | | | | | | | | | | | | | | | | |
| 76 | 5.3 | Review and Approval | 4 wks | 75 | Thu 5/15/14 | Thu 6/12/14 | 77 | | | | | | | | | | | | | | | | | | | | | | | | | | | | | | | | | | |
| 77 | 5.4 | EPA Approval of Pre-Design Work Plan | 0 wks | 76 | Thu 6/12/14 | Thu 6/12/14 | 78 | | | | | | | | | | | | | | | | | | | | | | | | | | | | | | | | | | |
| 78 | 5.5 | Pre-Design Investigation | 12 wks | 77 | Thu 6/12/14 | Thu 9/4/14 | 79 | | | | | | | | | | | | | | | | | | | | | | | | | | | | | | | | | | |
| 79 | 5.6 | Preliminary Design | 6 wks | 78 | Thu 9/4/14 | Thu 10/16/14 | 80 | | | | | | | | | | | | | | | | | | | | | | | | | | | | | | | | | | |
| 80 | 5.7 | Submit Preliminary Design | 0 wks | 79 | Thu 10/16/14 | Thu 10/16/14 | 81 | | | | | | | | | | | | | | | | | | | | | | | | | | | | | | | | | | |
| 81 | 5.8 | Review and Comment | 6 wks | 80 | Thu 10/16/14 | Thu 11/27/14 | 82 | | | | | | | | | | | | | | | | | | | | | | | | | | | | | | | | | | |
| 82 | 5.9 | Pre-Final Design | 6 wks | 81 | Thu 11/27/14 | Thu 1/8/15 | 83 | | | | | | | | | | | | | | | | | | | | | | | | | | | | | | | | | | |
| 83 | 5.10 | Review and Comment | 6 wks | 82 | Thu 1/8/15 | Thu 2/19/15 | 84 | | | | | | | | | | | | | | | | | | | | | | | | | | | | | | | | | | |
| 84 | 5.11 | Final Design | 6 wks | 83 | Thu 2/19/15 | Thu 4/2/15 | 85 | | | | | | | | | | | | | | | | | | | | | | | | | | | | | | | | | | |
| 85 | 5.12 | Review | 3 wks | 84 | Thu 4/2/15 | Thu 4/23/15 | 86 | | | | | | | | | | | | | | | | | | | | | | | | | | | | | | | | | | |
| 86 | 5.13 | EPA Approval of Final Design | 0 wks | 85 | Thu 4/23/15 | Thu 4/23/15 | 87 | | | | | | | | | | | | | | | | | | | | | | | | | | | | | | | | | | |
| 87 | 5.14 | Prepare RAWP | 8 wks | 86 | Thu 4/23/15 | Thu 6/18/15 | 88 | | | | | | | | | | | | | | | | | | | | | | | | | | | | | | | | | | |
| 88 | 5.15 | Submit RAWP | 0 wks | 87 | Thu 6/18/15 | Thu 6/18/15 | | | | | | | | | | | | | | | | | | | | | | | | | | | | | | | | | | | |
| 89 | | | | | | | | | | | | | | | | | | | | | | | | | | | | | | | | | | | | | | | | | |
| 90 | 6 | In-Situ Geochemical Stabilization (ISGS): DESIGN TRACK #3 | 142.4 wks | | Thu 2/7/13 | Fri 10/30/15 | | | | | | | | | | | | | | | | | | | | | | | | | | | | | | | | | | | |
| 91 | 6.1 | Process Area | 85.4 wks | | Thu 2/7/13 | Fri 9/26/14 | | | | | | | | | | | | | | | | | | | | | | | | | | | | | | | | | | | |
| 92 | 6.1.1 | EPA Approval of ISGS Demonstration Work Plan (2012) | 0 wks | | Thu 2/7/13 | Thu 2/7/13 | | | | | | | | | | | | | | | | | | | | | | | | | | | | | | | | | | | |
| 93 | 6.1.2 | Preliminary Design (included in Demonstration Work Plan) | 0 wks | | Thu 2/7/13 | Thu 2/7/13 | | | | | | | | | | | | | | | | | | | | | | | | | | | | | | | | | | | |
| 94 | 6.1.3 | Characterization and DNAPL Recovery (began 2012) | 32 wks | | Thu 2/7/13 | Wed 9/18/13 | 95 | | | | | | | | | | | | | | | | | | | | | | | | | | | | | | | | | | |
| 95 | 6.1.4 | Characterization Report and Pilot Test Plan | 11.8 wks | 94 | Thu 9/19/13 | Tue 12/10/13 | 96 | | | | | | | | | | | | | | | | | | | | | | | | | | | | | | | | | | |
| 96 | 6.1.5 | Submit Characterization Report and Pilot Test Plan | 0 wks | 95 | Tue 12/10/13 | Tue 12/10/13 | 97 | | | | | | | | | | | | | | | | | | | | | | | | | | | | | | | | | | |
| 97 | 6.1.6 | Review and Approval of Pilot Test Plan | 10 wks | 96 | Wed 12/11/13 | Tue 2/18/14 | 99 | | | | | | | | | | | | | | | | | | | | | | | | | | | | | | | | | | |
| 98 | 6.1.7 | Technical Working Group Meeting | 0 wks | | Wed 12/18/13 | Wed 12/18/13 | | | | | | | | | | | | | | | | | | | | | | | | | | | | | | | | | | | |
| 99 | 6.1.8 | Pilot Injection Testing | 3 wks | 97 | Mon 3/17/14 | Fri 4/4/14 | | | | | | | | | | | | | | | | | | | | | | | | | | | | | | | | | | | |
| 100 | 6.1.8.1 | Pre-Pilot Testing & Chemical Delivery | 1 wk | | Mon 3/17/14 | Fri 3/21/14 | 102,101 | | | | | | | | | | | | | | | | | | | | | | | | | | | | | | | | | | |
| 101 | 6.1.8.2 | Pilot Injections | 2 wks | 100 | Mon 3/24/14 | Fri 4/4/14 | | | | | | | | | | | | | | | | | | | | | | | | | | | | | | | | | | | |
| 102 | 6.1.9 | Pre-Final Design | 9 wks | 100 | Mon 3/24/14 | Fri 5/23/14 | 103 | | | | | | | | | | | | | | | | | | | | | | | | | | | | | | | | | | |
| 103 | 6.1.10 | Submit Pre-Final Design | 0 wks | 102 | Fri 5/23/14 | Fri 5/23/14 | 104 | | | | | | | | | | | | | | | | | | | | | | | | | | | | | | | | | | |
| 104 | 6.1.11 | Review and Comment | 8 wks | 103 | Mon 5/26/14 | Fri 7/18/14 | 105 | | | | | | | | | | | | | | | | | | | | | | | | | | | | | | | | | | |
| 105 | 6.1.12 | Final Design and RAWP | 4 wks | 104 | Mon 7/21/14 | Fri 8/15/14 | 106 | | | | | | | | | | | | | | | | | | | | | | | | | | | | | | | | | | |
| 106 | 6.1.13 | Submit Final Design and RAWP | 0 wks | 105 | Fri 8/15/14 | Fri 8/15/14 | 107 | | | | | | | | | | | | | | | | | | | | | | | | | | | | | | | | | | |
| 107 | 6.1.14 | Review | 6 wks | 106 | Mon 8/18/14 | Fri 9/26/14 | 108 | | | | | | | | | | | | | | | | | | | | | | | | | | | | | | | | | | |
| 108 | 6.1.15 | EPA Approval of Final Design and RAWP | 0 wks | 107 | Fri 9/26/14 | Fri 9/26/14 | | | | | | | | | | | | | | | | | | | | | | | | | | | | | | | | | | | |



GAINESVILLE REMEDIAL DESIGN

| ID | WBS | Task Name | Duration | Predecessors | Start | Finish | Successors | 1Q13 | 2Q13 | 3Q13 | 4Q13 | 1Q14 | 2Q14 | 3Q14 | 4Q14 | 1Q15 | 2Q15 | 3Q15 | 4Q15 | 1Q16 | 2Q16 | 3Q16 | 4Q16 | 1Q17 | 2Q17 | | | | | |
|-----|--------|---|-----------------|--------------|---------------------|---------------------|------------|------|------|------|------|------|------|------|------|------|------|------|------|------|------|------|------|------|------|---|---|---|---|---|
| | | | | | | | | J | F | M | A | M | J | J | A | S | O | N | D | J | F | M | A | M | J | J | A | S | O | N |
| 109 | 6.2 | South Lagoon | 74 wks | | Mon 6/2/14 | Fri 10/30/15 | | | | | | | | | | | | | | | | | | | | | | | | |
| 110 | 6.2.1 | Preliminary Design & Design Investigation Work Plan | 6 wks | | Mon 6/2/14 | Fri 7/11/14 | 111 | | | | | | | | | | | | | | | | | | | | | | | |
| 111 | 6.2.2 | Submit Preliminary Design & Design Investigation Work Plan | 0 wks | 110 | Fri 7/11/14 | Fri 7/11/14 | 112 | | | | | | | | | | | | | | | | | | | | | | | |
| 112 | 6.2.3 | Review and Approval Preliminary Design & Design Investigation Work Plan | 6 wks | 111 | Mon 7/14/14 | Fri 8/22/14 | 113 | | | | | | | | | | | | | | | | | | | | | | | |
| 113 | 6.2.4 | Installation of Borings and DNAPL Recovery Wells | 8 wks | 112 | Mon 8/25/14 | Fri 10/17/14 | 114 | | | | | | | | | | | | | | | | | | | | | | | |
| 114 | 6.2.5 | Collection of Baseline Data | 26 wks | 113 | Mon 10/20/14 | Fri 4/17/15 | 115 | | | | | | | | | | | | | | | | | | | | | | | |
| 115 | 6.2.6 | Pre-Final Design | 6 wks | 114 | Mon 4/20/15 | Fri 5/29/15 | 116 | | | | | | | | | | | | | | | | | | | | | | | |
| 116 | 6.2.7 | Submit Pre-Final Design | 0 wks | 115 | Fri 5/29/15 | Fri 5/29/15 | 117 | | | | | | | | | | | | | | | | | | | | | | | |
| 117 | 6.2.8 | Review and Comment | 6 wks | 116 | Mon 6/1/15 | Fri 7/10/15 | 118 | | | | | | | | | | | | | | | | | | | | | | | |
| 118 | 6.2.9 | Final Design | 4 wks | 117 | Mon 7/13/15 | Fri 8/7/15 | 119 | | | | | | | | | | | | | | | | | | | | | | | |
| 119 | 6.2.10 | Submit Final Design | 0 wks | 118 | Fri 8/7/15 | Fri 8/7/15 | 120 | | | | | | | | | | | | | | | | | | | | | | | |
| 120 | 6.2.11 | Review | 4 wks | 119 | Mon 8/10/15 | Fri 9/4/15 | 121 | | | | | | | | | | | | | | | | | | | | | | | |
| 121 | 6.2.12 | EPA Approval of Final Design | 0 wks | 120 | Fri 9/4/15 | Fri 9/4/15 | 122 | | | | | | | | | | | | | | | | | | | | | | | |
| 122 | 6.2.13 | Prepare RAWP | 8 wks | 121 | Mon 9/7/15 | Fri 10/30/15 | 123 | | | | | | | | | | | | | | | | | | | | | | | |
| 123 | 6.2.14 | Submit RAWP | 0 wks | 122 | Fri 10/30/15 | Fri 10/30/15 | | | | | | | | | | | | | | | | | | | | | | | | |
| 124 | | | | | | | | | | | | | | | | | | | | | | | | | | | | | | |
| 125 | 7 | In-Situ Solidification/Stabilization (ISS/S): DESIGN TRACK #4 | 172 wks | | Thu 12/26/13 | Thu 4/13/17 | | | | | | | | | | | | | | | | | | | | | | | | |
| 126 | 7.1 | Pre-Design Investigation & Treatability Test Workplan | 26 wks | 125 | Thu 12/26/13 | Thu 6/26/14 | 127 | | | | | | | | | | | | | | | | | | | | | | | |
| 127 | 7.2 | Beazer Submit Pre-Design Investigation & Treatability Test WP | 0 wks | 126 | Thu 6/26/14 | Thu 6/26/14 | 128 | | | | | | | | | | | | | | | | | | | | | | | |
| 128 | 7.3 | Review and Approval | 8 wks | 127 | Thu 6/26/14 | Thu 8/21/14 | 129 | | | | | | | | | | | | | | | | | | | | | | | |
| 129 | 7.4 | Conduct Pre-Design Investigation & Treatability Test | 40 wks | 128 | Thu 8/21/14 | Thu 5/28/15 | 130 | | | | | | | | | | | | | | | | | | | | | | | |
| 130 | 7.5 | Pilot Test Workplan | 13 wks | 129 | Thu 5/28/15 | Thu 8/27/15 | 131 | | | | | | | | | | | | | | | | | | | | | | | |
| 131 | 7.6 | Beazer Submit Pilot Test Workplan | 0 wks | 130 | Thu 8/27/15 | Thu 8/27/15 | 132 | | | | | | | | | | | | | | | | | | | | | | | |
| 132 | 7.7 | Review and Approval | 8 wks | 131 | Thu 8/27/15 | Thu 10/22/15 | 133 | | | | | | | | | | | | | | | | | | | | | | | |
| 133 | 7.8 | Conduct Pilot Test | 13 wks | 132 | Thu 10/22/15 | Thu 1/21/16 | 134 | | | | | | | | | | | | | | | | | | | | | | | |
| 134 | 7.9 | Preliminary Design | 13 wks | 133 | Thu 1/21/16 | Thu 4/21/16 | 135 | | | | | | | | | | | | | | | | | | | | | | | |
| 135 | 7.10 | Submit Preliminary Design | 0 wks | 134 | Thu 4/21/16 | Thu 4/21/16 | 136 | | | | | | | | | | | | | | | | | | | | | | | |
| 136 | 7.11 | Review and Comment | 10 wks | 135 | Thu 4/21/16 | Thu 6/30/16 | 137 | | | | | | | | | | | | | | | | | | | | | | | |
| 137 | 7.12 | Pre-Final Design | 13 wks | 136 | Thu 6/30/16 | Thu 9/29/16 | 138 | | | | | | | | | | | | | | | | | | | | | | | |
| 138 | 7.13 | Review and Comment | 10 wks | 137 | Thu 9/29/16 | Thu 12/8/16 | 139 | | | | | | | | | | | | | | | | | | | | | | | |
| 139 | 7.14 | Final Design | 6 wks | 138 | Thu 12/8/16 | Thu 1/19/17 | 140 | | | | | | | | | | | | | | | | | | | | | | | |
| 140 | 7.15 | Review and Approval | 4 wks | 139 | Thu 1/19/17 | Thu 2/16/17 | 141 | | | | | | | | | | | | | | | | | | | | | | | |
| 141 | 7.16 | EPA Approval of Final Design | 0 wks | 140 | Thu 2/16/17 | Thu 2/16/17 | 142 | | | | | | | | | | | | | | | | | | | | | | | |
| 142 | 7.17 | Prepare RAWP | 8 wks | 141 | Thu 2/16/17 | Thu 4/13/17 | 143 | | | | | | | | | | | | | | | | | | | | | | | |
| 143 | 7.18 | Submit RAWP | 0 wks | 142 | Thu 4/13/17 | Thu 4/13/17 | | | | | | | | | | | | | | | | | | | | | | | | |
| 144 | | | | | | | | | | | | | | | | | | | | | | | | | | | | | | |
| 145 | 8 | Other Engineered Components: DESIGN TRACK #5 | 87 wks | | Mon 6/1/15 | Fri 1/27/17 | | | | | | | | | | | | | | | | | | | | | | | | |
| 146 | 8.1 | Pre-Design Work Plan | 6 wks | | Mon 6/1/15 | Fri 7/10/15 | 147 | | | | | | | | | | | | | | | | | | | | | | | |
| 147 | 8.2 | Submit Pre-Design Work Plan | 0 wks | 146 | Fri 7/10/15 | Fri 7/10/15 | 148 | | | | | | | | | | | | | | | | | | | | | | | |
| 148 | 8.3 | Review and Approval | 6 wks | 147 | Mon 7/13/15 | Fri 8/21/15 | 149 | | | | | | | | | | | | | | | | | | | | | | | |
| 149 | 8.4 | EPA Approval of Pre-Design Work Plan | 0 wks | 148 | Fri 8/21/15 | Fri 8/21/15 | 150 | | | | | | | | | | | | | | | | | | | | | | | |
| 150 | 8.5 | Pre-Design Investigation | 26 wks | 149 | Mon 8/24/15 | Fri 2/19/16 | 151 | | | | | | | | | | | | | | | | | | | | | | | |
| 151 | 8.6 | Preliminary Design | 6 wks | 150 | Mon 2/22/16 | Fri 4/1/16 | 152 | | | | | | | | | | | | | | | | | | | | | | | |
| 152 | 8.7 | Submit Preliminary Design | 0 wks | 151 | Fri 4/1/16 | Fri 4/1/16 | 153 | | | | | | | | | | | | | | | | | | | | | | | |
| 153 | 8.8 | Review and Comment | 6 wks | 152 | Mon 4/4/16 | Fri 5/13/16 | 154 | | | | | | | | | | | | | | | | | | | | | | | |
| 154 | 8.9 | Pre-Final Design | 13 wks | 153 | Mon 5/16/16 | Fri 8/12/16 | 155 | | | | | | | | | | | | | | | | | | | | | | | |
| 155 | 8.10 | Review and Comment | 6 wks | 154 | Mon 8/15/16 | Fri 9/23/16 | 156 | | | | | | | | | | | | | | | | | | | | | | | |
| 156 | 8.11 | Final Design | 6 wks | 155 | Mon 9/26/16 | Fri 11/4/16 | 157 | | | | | | | | | | | | | | | | | | | | | | | |
| 157 | 8.12 | Review | 4 wks | 156 | Mon 11/7/16 | Fri 12/2/16 | 158 | | | | | | | | | | | | | | | | | | | | | | | |
| 158 | 8.13 | EPA Approval of Final Design | 0 wks | 157 | Fri 12/2/16 | Fri 12/2/16 | 159 | | | | | | | | | | | | | | | | | | | | | | | |
| 159 | 8.14 | Prepare RAWP | 8 wks | 158 | Mon 12/5/16 | Fri 1/27/17 | 160 | | | | | | | | | | | | | | | | | | | | | | | |
| 160 | 8.15 | Submit RAWP | 0 wks | 159 | Fri 1/27/17 | Fri 1/27/17 | | | | | | | | | | | | | | | | | | | | | | | | |
| 161 | | | | | | | | | | | | | | | | | | | | | | | | | | | | | | |
| 162 | 9 | Institutional Control | 90.3 wks | | Tue 7/9/13 | Wed 4/1/15 | | | | | | | | | | | | | | | | | | | | | | | | |

