



April 1, 2015

Scott Miller
Remedial Project Manager
Superfund Remedial Branch, Section C
U.S. Environmental Protection Agency, Region 4
61 Forsyth Street SW
Atlanta, GA 30303-8909

VIA EMAIL

Subject: **February 2015 Monthly Progress Report**

Dear Mr. Miller:

On behalf of Beazer East, Inc. (Beazer), attached is the February 2015 Monthly Progress Report for the Koppers portion of the Cabot/Koppers Superfund Site in Gainesville, Florida. If you have any questions or comments, please contact me.

Sincerely,

A handwritten signature in blue ink, appearing to read 'Gregory W. Council'.

Gregory W. Council, P.E.
Principal Engineer

cc: Rusty Kestle, EPA
Kelsey Helton, FDEP
John Mousa, ACEPD
Kristie Williams, City of Gainesville
Yvette Carter, City of Gainesville
Rick Hutton, GRU
Carrie McCoy, Black & Veatch
Josh Hayes, J.M. Waller
John Herbert, GeoHydro Consultants
Patricia Cline, Community Technical Advisor
Linda Paul, Koppers, Inc.
Mitchell Brouman, TRMI
Mike Slenska, TRMI
Donna Kopach, TRMI
Jim Erickson, Tetra Tech

**February 2015
MONTHLY PROGRESS REPORT
Cabot/Koppers Superfund Site
Gainesville, Florida**

1. Compliance Actions:

- Beazer's Operation and Maintenance (O&M) Contractor performed routine treatment plant O&M services for the groundwater extraction and pretreatment system.
- Remedial Design and Remedial Action activities are presently being conducted.

2. Sampling/Test Results and Data:

- Instantaneous flow rates and totalizer volumes were measured in each extraction well.
- The bi-weekly passive NAPL recovery program continues at Upper Hawthorn monitoring wells: 1.8 gallons of NAPL were removed from Upper Hawthorn wells during the past month (2 recovery events). A total of 586.8 gallons have been removed since the start of the NAPL recovery program on June 19, 2004. Table 1 provides details of the NAPL recovery volumes by well and date.
- In addition, NAPL was removed from 26 temporary injection points (TIPs) installed in the Former Process Area as part of the In-Situ Geochemical Stabilization (ISGS) program (Table 2). This is a pilot demonstration for full scale design. Two NAPL recovery events were conducted during the month, resulting in a total of 103.4 gallons removed.
- NAPL was removed from five Upper Hawthorn recovery wells installed in the Former Process Area as part of the ISGS program (Table 3). Two NAPL recovery events were conducted during the month, resulting in 27.2 gallons removed.
- A total of 3,603,401 gallons of groundwater were recovered by the Surficial Aquifer drains and extraction well system (both Surficial Aquifer and UFA) during the past month (system run time of 649 hours). The average recovery rate for the month was approximately 92.5 gallons per minute (gpm). The recovery for each component is listed below.
 - Surficial Aquifer
 - Perimeter Extraction Wells: 525,738 gallons
 - Former North Lagoon Drain: 346,735 gallons
 - Former Drip Track Drain: 415,390 gallons
 - Former Process Area Drain: 427,960 gallons
 - Former South Lagoon Drain: 388,410 gallons
 - Upper Floridan Extraction Wells
 - FW-6: 36,531 gallons
 - FW-21B: 141,034 gallons
 - FW-31BE: 867,130 gallons
 - FW-32BE: 454,473 gallons

Approximately 354.1 million gallons have been recovered from the Surficial Aquifer extraction wells and four drains since the start of the Surficial Aquifer containment system in January 1995.

For the month, the total volume of water treated and discharged to the GRU wastewater system was 2,118,000 gallons. The remaining portion of the water, from Upper Floridan Aquifer wells, was treated and used for on-Property irrigation.

The Former South Lagoon and Former Process groundwater drain pumps were turned off for approximately 6 hours to pump and clean clarifiers and to treat backwash water.

3. Plans, Reports, Deliverables and Procedures Completed:

- Remedial Design/Remedial Action Status Update Meeting (EPA/Beazer) February 18, 2015.
- Submitted *Pre-Final Design for Former Process Area In-Situ Geochemical Stabilization Remediation* on February 17, 2015.
- Periodic maintenance checks and inspections.
- Treatment-plant component maintenance and repair as needed (caustic pump, carbon vessel gaskets and gauges, sludge pump diverter valve, bag filter vessel).
- Repaired plant sump pump.
- Repaired plant wiring.
- Cleaned EW-16 flow meter and shocked EW-16.
- Repaired North Lagoon trench flow meter.
- Replaced EW-11 pump and cleaned EW-11 flow meter.
- Rebuilt EW-8 pump after cleaning pump.
- Irrigation Breakthrough sampling on Feb 4, 2015.
- First quarter groundwater sampling event: Feb 16 - 20, 2015.
- On-property irrigation using treated groundwater from FW-6, FW-21B, FW-31BE, and FW-32BE.
- Revised treated effluent to GRU for January to 2,316,000 gallons.

4. Upcoming Actions:

- NAPL collection at Upper Hawthorn monitoring wells: bi-weekly.
- NAPL collection at temporary Upper Hawthorn ISGS injection points: bi-weekly.
- Routine inspection, operation, maintenance, and monitoring.
- Second quarter sampling event: May 11 - 16, 2015.

5. Schedule Status:

- The current remedial design schedule is attached.

6. Plan/Schedule Modifications:

- The schedule has been updated to reflect schedule changes.

7. Community Involvement:

- Tetra Tech's Community Coordinator has been in touch with many residents and property owners in the Stephen Foster neighborhood, and has been working closely with the city's community coordinators for the Stephen Foster soil replacement work.
- Future community involvement activities will be coordinated with EPA.

Table 1. DNAPL Recovery - Hawthorn Group Monitoring Wells

| Well ID | Total Last Month (gal) (2 events) January 2015 | DNAPL Volume (gal) 2/5/2015 | DNAPL Volume (gal) 2/19/2015 | Total This Month (gal) February 2015 |
|------------------|---------------------------------------------------|--------------------------------|---------------------------------|-----------------------------------------|
| HG-9S | 0 | Stain | Stain | 0 |
| HG-10S | 0 | Stain | Stain | 0 |
| HG-10D | 0 | Stain | Stain | 0 |
| HG-11S | 0.8 | 0.4 | 0.3 | 0.7 |
| HG-12S | 0.8 | 0.35 | 0.3 | 0.65 |
| HG-12D | 0 | ND | ND | 0 |
| HG-15S | 0.45 | 0.25 | 0.2 | 0.45 |
| HG-16S | 0.4 | Stain | Stain | 0 |
| HG-16D | 0 | Stain | Stain | 0 |
| MW-22B | 0 | Stain | Stain | 0 |
| Total | 2.45 | 1 | 0.8 | 1.8 |
| Cumulative Total | 585.01 | | | 586.81 |

ND - No DNAPL Detected

Table 2. DNAPL Recovery Temporary Injection Points (TIPs)

| Well ID | Total Last Month (gal) (2 events) January 2015 | DNAPL Volume (gal) 2/11/2015 | DNAPL Volume (gal) 2/24/2015 | Total This Month (gal) February 2015 |
|-------------|---------------------------------------------------|---------------------------------|---------------------------------|-----------------------------------------|
| 220N 180E | 4.3 | 2.2 | 2 | 4.2 |
| 280N 380E | 7.2 | 3.7 | 3.5 | 7.2 |
| 300N 180E | 9.1 | 4.3 | 4.3 | 8.6 |
| 300N 420E | 7.1 | 2.5 | 3 | 5.5 |
| 320N 220E | 5.9 | 3.0 | 2.7 | 5.7 |
| 320N 300E | 5.8 | 3.1 | 2.6 | 5.7 |
| 340N 340E | 10.4 | 5.3 | 5.1 | 10.4 |
| 360N 280E | 7.2 | 3.5 | 1.5 | 5 |
| 380N 340E | 10.8 | 5.5 | 5.5 | 11 |
| 400N 380E | 3 | 1.5 | 1.5 | 3 |
| 460N 340E | 2.8 | 1.5 | 1.5 | 3 |
| 420N 340E * | 6.9 | 3.6 | 3.5 | 7.1 |
| 220N 340E | 2.2 | 1.0 | 0.9 | 1.9 |
| 240N 380E | 2.6 | 1.4 | 1.4 | 2.8 |
| 340N 180E | 1.5 | 0.8 | 0.7 | 1.5 |
| 320N 140E | 1.4 | 0.5 | 0.5 | 1 |
| 300N 260E | 2.4 | 1.0 | 1.1 | 2.1 |
| 360N 140E | 0.6 | 0.2 | 0.2 | 0.4 |
| 400N 140E | 0.5 | 0.3 | 0.2 | 0.5 |
| 200N 220E | 1.8 | 0.8 | 0.9 | 1.7 |
| 280N 220E | 2.2 | 1.0 | 1 | 2 |
| 360N 220E | 2.8 | 1.4 | 1.2 | 2.6 |
| 280N 300E | 3 | 1.7 | 1.5 | 3.2 |
| 360N 380E | 6.9 | 3.3 | 3.2 | 6.5 |
| 507N 260E | 0 | Trace | Trace | 0 |
| Drip Track | 0.7 | 0.3 | 0.5 | 0.8 |
| Total | 109.1 | | | 103.4 |

NP - Not Pumped

* Inside ISGS Pilot Test Area

Table 3. DNAPL ISGS Recovery Data - DNAPL Recovery Wells

| Well ID | Total Last Month (gal) (2 events) January 2015 | DNAPL Volume (gal) 2/4/2015 | DNAPL Volume (gal) 2/18/2015 | Total This Month (gal) February 2015 |
|-----------|---------------------------------------------------|--------------------------------|---------------------------------|-----------------------------------------|
| M-38BE | NR | NR | NR | NR |
| M-39BE | NR | NR | NR | NR |
| M-40BE | NR | NR | NR | NR |
| M-41BE | NR | NR | NR | NR |
| M-42BE | NR | NR | NR | NR |
| HG-36SE * | 3 | 1.6 | 1.3 | 2.9 |
| HG-37SE | 4.2 | 2.1 | 2.0 | 4.1 |
| HG-38SE | 8.7 | 4.7 | 4.8 | 9.5 |
| HG-39SE | 5.8 | 2.9 | 2.7 | 5.6 |
| HG-40SE | 5.2 | 2.6 | 2.5 | 5.1 |
| Total | 26.9 | | | 27.2 |

NR - No Recovery

* Inside ISGS Pilot Test Area

GAINESVILLE REMEDIAL DESIGN

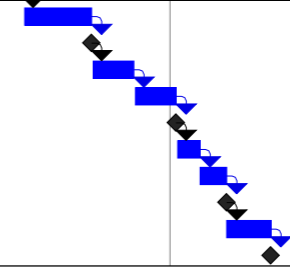
| ID | WBS | Task Name | Duration | Predecessors | Start | Finish | 2013 | | | | | | | | | | | | 2014 | | | | 2015 | | | | 2016 | | | | 2017 | | | | 2018 | | | |
|----|---------|-----------------------------------------------------------------------------------------|------------------|--------------|--------------------|---------------------|-------|-------|-------|-------|-------|-------|-------|-------|-------|-------|-------|-------|-------|-------|-------|-------|-------|-------|-------|-------|-------|-------|-------|-------|-------|-------|-------|-------|------|--|--|--|
| | | | | | | | Qtr 1 | Qtr 2 | Qtr 3 | Qtr 4 | Qtr 1 | Qtr 2 | Qtr 3 | Qtr 4 | Qtr 1 | Qtr 2 | Qtr 3 | Qtr 4 | Qtr 1 | Qtr 2 | Qtr 3 | Qtr 4 | Qtr 1 | Qtr 2 | Qtr 3 | Qtr 4 | Qtr 1 | Qtr 2 | Qtr 3 | Qtr 4 | Qtr 1 | Qtr 2 | Qtr 3 | Qtr 4 | | | | |
| 1 | | 1 Consent Decree for RD/RA | 23.8 wks | | Thu 2/7/13 | Wed 7/24/13 | | | | | | | | | | | | | | | | | | | | | | | | | | | | | | | | |
| 2 | 1.1 | US DOJ Lodges Donsent Decree with Court | 0 days | | Thu 2/7/13 | Thu 2/7/13 | | | | | | | | | | | | | | | | | | | | | | | | | | | | | | | | |
| 3 | 1.2 | Public Comment on Consent Decree | 4.6 wks | | Wed 2/13/13 | Fri 3/15/13 | | | | | | | | | | | | | | | | | | | | | | | | | | | | | | | | |
| 4 | 1.3 | Beazer Submittal: Project Coordinators, Supervising Contractor, Quality Management Plan | 0 days | | Fri 2/15/13 | Fri 2/15/13 | | | | | | | | | | | | | | | | | | | | | | | | | | | | | | | | |
| 5 | 1.4 | Court Enters Consent Decree Final | 0 days | | Tue 7/9/13 | Tue 7/9/13 | | | | | | | | | | | | | | | | | | | | | | | | | | | | | | | | |
| 6 | 1.5 | EPA Issues Authorization to Proceed with Remedial Design | 0 days | | Wed 7/24/13 | Wed 7/24/13 | | | | | | | | | | | | | | | | | | | | | | | | | | | | | | | | |
| 7 | | | | | | | | | | | | | | | | | | | | | | | | | | | | | | | | | | | | | | |
| 8 | | 2 Remedial Design Work Plan (RDWP) | 22.3 wks | | Wed 7/24/13 | Thu 12/26/13 | | | | | | | | | | | | | | | | | | | | | | | | | | | | | | | | |
| 9 | 2.1 | Prepare RDWP | 43 days | 6 | Wed 7/24/13 | Fri 9/20/13 | | | | | | | | | | | | | | | | | | | | | | | | | | | | | | | | |
| 10 | 2.2 | Beazer Submit RDWP | 0 wks | 9 | Fri 9/20/13 | Fri 9/20/13 | | | | | | | | | | | | | | | | | | | | | | | | | | | | | | | | |
| 11 | 2.3 | EPA Review and Comment RDWP | 6.8 wks | 10 | Mon 9/23/13 | Thu 11/7/13 | | | | | | | | | | | | | | | | | | | | | | | | | | | | | | | | |
| 12 | 2.4 | Beazer Respond to Comments | 4.3 wks | 11 | Fri 11/8/13 | Mon 12/9/13 | | | | | | | | | | | | | | | | | | | | | | | | | | | | | | | | |
| 13 | 2.5 | Beazer Submit Responses and RDWP Version 2 | 0 wks | 12 | Mon 12/9/13 | Mon 12/9/13 | | | | | | | | | | | | | | | | | | | | | | | | | | | | | | | | |
| 14 | 2.6 | EPA Review | 2.6 wks | 13 | Mon 12/9/13 | Thu 12/26/13 | | | | | | | | | | | | | | | | | | | | | | | | | | | | | | | | |
| 15 | 2.7 | EPA Approval RDWP | 0 wks | 14 | Thu 12/26/13 | Thu 12/26/13 | | | | | | | | | | | | | | | | | | | | | | | | | | | | | | | | |
| 16 | | | | | | | | | | | | | | | | | | | | | | | | | | | | | | | | | | | | | | |
| 17 | | 3 Supporting Plans for RD/RA | 82 wks | | Fri 9/20/13 | Fri 4/17/15 | | | | | | | | | | | | | | | | | | | | | | | | | | | | | | | | |
| 18 | 3.5 | Beazer Submit Health & Safety Plan | 0 wks | 10 | Fri 9/20/13 | Fri 9/20/13 | | | | | | | | | | | | | | | | | | | | | | | | | | | | | | | | |
| 19 | 3.2 | Materials Management Plan | 5 wks | 10 | Tue 4/1/14 | Mon 5/5/14 | | | | | | | | | | | | | | | | | | | | | | | | | | | | | | | | |
| 20 | 3.6 | Stormwater Management Plan | 5 wks | 19FF | Tue 4/1/14 | Mon 5/5/14 | | | | | | | | | | | | | | | | | | | | | | | | | | | | | | | | |
| 21 | 3.7 | Noise and Dust Control Plan | 5 wks | 19FF | Tue 4/1/14 | Mon 5/5/14 | | | | | | | | | | | | | | | | | | | | | | | | | | | | | | | | |
| 22 | 3.5 | Equipment Decontamination Plan | 5 wks | 19FF | Tue 4/1/14 | Mon 5/5/14 | | | | | | | | | | | | | | | | | | | | | | | | | | | | | | | | |
| 23 | 3.6 | Beazer update QAPP | 15 wks | | Mon 1/5/15 | Fri 4/17/15 | | | | | | | | | | | | | | | | | | | | | | | | | | | | | | | | |
| 24 | 3.7 | Beazer Submit Revised QAPP | 0 wks | 23 | Fri 4/17/15 | Fri 4/17/15 | | | | | | | | | | | | | | | | | | | | | | | | | | | | | | | | |
| 25 | | | | | | | | | | | | | | | | | | | | | | | | | | | | | | | | | | | | | | |
| 26 | | 4 Off-Property Soil Replacement (OU-5): DESIGN TRACK #1 | 104.8 wks | | Tue 4/30/13 | Fri 5/1/15 | | | | | | | | | | | | | | | | | | | | | | | | | | | | | | | | |
| 27 | 4.1 | Initial Identification of Remediation & Evaluation Parcels | 0 wks | | Tue 4/30/13 | Tue 4/30/13 | | | | | | | | | | | | | | | | | | | | | | | | | | | | | | | | |
| 28 | 4.2 | Obtain Access Agreements for Surveys & Sampling | 23 wks | | Thu 5/2/13 | Wed 10/9/13 | | | | | | | | | | | | | | | | | | | | | | | | | | | | | | | | |
| 29 | 4.3 | Community Information Session | 0 wks | | Thu 5/30/13 | Thu 5/30/13 | | | | | | | | | | | | | | | | | | | | | | | | | | | | | | | | |
| 30 | 4.4 | 4.4 Sampling for Refinement of Remediation Parcels (July 2013) | 18.8 wks | | Fri 7/19/13 | Wed 11/27/13 | | | | | | | | | | | | | | | | | | | | | | | | | | | | | | | | |
| 31 | 4.4.1 | Proposal for Sampling (July 2013) | 0 wks | | Fri 7/19/13 | Fri 7/19/13 | | | | | | | | | | | | | | | | | | | | | | | | | | | | | | | | |
| 32 | 4.4.2 | EPA Approval of Sampling | 0 wks | | Mon 7/22/13 | Mon 7/22/13 | | | | | | | | | | | | | | | | | | | | | | | | | | | | | | | | |
| 33 | 4.4.3 | Sample Collection | 2 days | | Tue 7/30/13 | Wed 7/31/13 | | | | | | | | | | | | | | | | | | | | | | | | | | | | | | | | |
| 34 | 4.4.4 | Analysis and Validation | 6.2 wks | 33 | Thu 8/1/13 | Thu 9/12/13 | | | | | | | | | | | | | | | | | | | | | | | | | | | | | | | | |
| 35 | 4.4.5 | Data Summary Report | 10.8 wks | 34 | Fri 9/13/13 | Wed 11/27/13 | | | | | | | | | | | | | | | | | | | | | | | | | | | | | | | | |
| 36 | 4.4.6 | Beazer Submit Data Summary and Fingerprinting Report | 0 wks | 35 | Wed 11/27/13 | Wed 11/27/13 | | | | | | | | | | | | | | | | | | | | | | | | | | | | | | | | |
| 37 | 4.5 | 4.5 Pilot Home Soil Replacement | 10.3 wks | | Thu 9/26/13 | Fri 12/6/13 | | | | | | | | | | | | | | | | | | | | | | | | | | | | | | | | |
| 38 | 4.5.1 | Survey | 1.8 wks | | Thu 9/26/13 | Tue 10/8/13 | | | | | | | | | | | | | | | | | | | | | | | | | | | | | | | | |
| 39 | 4.5.2 | Design & Interview | 3 wks | 38 | Wed 10/9/13 | Tue 10/29/13 | | | | | | | | | | | | | | | | | | | | | | | | | | | | | | | | |
| 40 | 4.5.3 | Borrow Sampling | 2 wks | | Thu 10/10/13 | Wed 10/23/13 | | | | | | | | | | | | | | | | | | | | | | | | | | | | | | | | |
| 41 | 4.5.4 | Sample Analysis | 2 wks | 40 | Thu 10/24/13 | Wed 11/6/13 | | | | | | | | | | | | | | | | | | | | | | | | | | | | | | | | |
| 42 | 4.5.5 | Pilot Plan | 6 wks | | Thu 9/26/13 | Wed 11/6/13 | | | | | | | | | | | | | | | | | | | | | | | | | | | | | | | | |
| 43 | 4.5.6 | Submit Pilot Plan | 0 wks | 42,41 | Wed 11/6/13 | Wed 11/6/13 | | | | | | | | | | | | | | | | | | | | | | | | | | | | | | | | |
| 44 | 4.5.7 | Review | 1 wk | 43 | Thu 11/7/13 | Wed 11/13/13 | | | | | | | | | | | | | | | | | | | | | | | | | | | | | | | | |
| 45 | 4.5.8 | EPA Approval of Pilot Plan | 0 wks | 44 | Wed 11/13/13 | Wed 11/13/13 | | | | | | | | | | | | | | | | | | | | | | | | | | | | | | | | |
| 46 | 4.5.9 | Permitting | 2 wks | 45FF | Thu 10/31/13 | Wed 11/13/13 | | | | | | | | | | | | | | | | | | | | | | | | | | | | | | | | |
| 47 | 4.5.10 | Pilot Implementation | 3.3 wks | 46,45 | Thu 11/14/13 | Fri 12/6/13 | | | | | | | | | | | | | | | | | | | | | | | | | | | | | | | | |
| 48 | 4.6 | 4.6 Blocks A-I Remediation Design | 42.4 wks | | Mon 9/16/13 | Tue 7/8/14 | | | | | | | | | | | | | | | | | | | | | | | | | | | | | | | | |
| 49 | 4.6.1 | Remedial Design Details | 12.4 wks | 35 | Thu 11/28/13 | Fri 2/21/14 | | | | | | | | | | | | | | | | | | | | | | | | | | | | | | | | |
| 50 | 4.6.2 | Submit RD Details | 0 wks | 49 | Fri 2/21/14 | Fri 2/21/14 | | | | | | | | | | | | | | | | | | | | | | | | | | | | | | | | |
| 51 | 4.6.3 | Review and Comment | 0.8 wks | 50 | Mon 2/24/14 | Thu 2/27/14 | | | | | | | | | | | | | | | | | | | | | | | | | | | | | | | | |
| 52 | 4.6.4 | Surveying & Interviews | 34 wks | | Mon 9/16/13 | Fri 5/9/14 | | | | | | | | | | | | | | | | | | | | | | | | | | | | | | | | |
| 53 | 4.6.5 | Parcel Designs & Remediation Agreements | 28 wks | | Mon 12/2/13 | Fri 6/13/14 | | | | | | | | | | | | | | | | | | | | | | | | | | | | | | | | |
| 54 | 4.6.6 | 4.6.6 Final Design and RAWP | 19.6 wks | | Fri 2/21/14 | Tue 7/8/14 | | | | | | | | | | | | | | | | | | | | | | | | | | | | | | | | |
| 55 | 4.6.6.1 | Submit Pre-Final Designs & RAWP: Blocks G & H | 0 wks | | Fri 2/21/14 | Fri 2/21/14 | | | | | | | | | | | | | | | | | | | | | | | | | | | | | | | | |
| 56 | 4.6.6.2 | Final Design and RAWP Approval: Blocks G-H | 1 wk | 55 | Fri 2/21/14 | Thu 2/27/14 | | | | | | | | | | | | | | | | | | | | | | | | | | | | | | | | |
| 57 | 4.6.6.3 | Submit Pre-Final Designs & RAWP: Blocks E&F | 0 wks | | Fri 3/7/14 | Fri 3/7/14 | | | | | | | | | | | | | | | | | | | | | | | | | | | | | | | | |
| 58 | 4.6.6.4 | Final Design and RAWP Approval: Blocks E&F | 1 day | 57 | Fri 3/7/14 | Fri 3/7/14 | | | | | | | | | | | | | | | | | | | | | | | | | | | | | | | | |
| 59 | 4.6.6.5 | Submit Pre-Final Designs & RAWP: Block D | 0 wks | | Thu 4/3/14 | Thu 4/3/14 | | | | | | | | | | | | | | | | | | | | | | | | | | | | | | | | |
| 60 | 4.6.6.6 | Final Design and RAWP Approval: Block D | 2 days | 59 | Thu 4/3/14 | Fri 4/4/14 | | | | | | | | | | | | | | | | | | | | | | | | | | | | | | | | |
| 61 | 4.6.6.7 | Submit Pre-Final Designs & RAWP: Block C | 0 wks | 59FF+4 wks | Wed 4/30/14 | Wed 4/30/14 | | | | | | | | | | | | | | | | | | | | | | | | | | | | | | | | |
| 62 | 4.6.6.8 | Final Design and RAWP Approval: Block C | 0 wks | 61 | Wed 4/30/14 | Wed 4/30/14 | | | | | | | | | | | | | | | | | | | | | | | | | | | | | | | | |
| 63 | 4.6.6.9 | Submit Pre-Final Designs & RAWP: Block B | 0 wks | 61FF+3.1 wk | Thu 5/22/14 | Thu 5/22/14 | | | | | | | | | | | | | | | | | | | | | | | | | | | | | | | | |

GAINESVILLE REMEDIAL DESIGN

| ID | WBS | Task Name | Duration | Predecessors | Start | Finish | 2013 | | | | 2014 | | | | 2015 | | | | 2016 | | | | 2017 | | | | 2018 | | | |
|-----|---------|------------------------------------------------------------------|------------------|--------------|---------------------|--------------------|-------|-------|-------|-------|-------|-------|-------|-------|-------|-------|-------|-------|-------|-------|-------|-------|-------|-------|-------|-------|-------|-------|-------|-------|
| | | | | | | | Qtr 4 | Qtr 1 | Qtr 2 | Qtr 3 | Qtr 4 | Qtr 1 | Qtr 2 | Qtr 3 | Qtr 4 | Qtr 1 | Qtr 2 | Qtr 3 | Qtr 4 | Qtr 1 | Qtr 2 | Qtr 3 | Qtr 4 | Qtr 1 | Qtr 2 | Qtr 3 | Qtr 4 | Qtr 1 | Qtr 2 | Qtr 3 |
| 64 | 6.6.10 | Final Design and RAWP Approval: Block B | 0.6 wks | 63 | Thu 5/22/14 | Tue 5/27/14 | | | | | | | | | | | | | | | | | | | | | | | | |
| 65 | 6.6.11 | Submit Pre-Final Designs & RAWP: Block A | 0 wks | 63FF+3 wks | Thu 6/12/14 | Thu 6/12/14 | | | | | | | | | | | | | | | | | | | | | | | | |
| 66 | 6.6.12 | Final Design and RAWP Approval: Block A | 0.6 wks | 65 | Thu 6/12/14 | Tue 6/17/14 | | | | | | | | | | | | | | | | | | | | | | | | |
| 67 | 6.6.13 | Submit Pre-Final Designs & RAWP: Block I | 0 wks | 65FF+3.5 wk | Mon 7/7/14 | Mon 7/7/14 | | | | | | | | | | | | | | | | | | | | | | | | |
| 68 | 6.6.14 | Final Design and RAWP Approval: Block I | 0.2 wks | 67 | Tue 7/8/14 | Tue 7/8/14 | | | | | | | | | | | | | | | | | | | | | | | | |
| 69 | 4.7 | Sampling for Refinement of Remediation Parcels (Feb 2014) | 24.8 wks | | Wed 2/19/14 | Tue 8/12/14 | | | | | | | | | | | | | | | | | | | | | | | | |
| 70 | 4.7.1 | Beazer & EPA Sampling | 0.2 wks | | Wed 2/19/14 | Wed 2/19/14 | | | | | | | | | | | | | | | | | | | | | | | | |
| 71 | 4.7.2 | Analysis and Validation | 7.2 wks | 70 | Thu 2/20/14 | Thu 4/10/14 | | | | | | | | | | | | | | | | | | | | | | | | |
| 72 | 4.7.3 | Data Summary Report Addendum | 16 wks | 71 | Fri 4/11/14 | Thu 7/31/14 | | | | | | | | | | | | | | | | | | | | | | | | |
| 73 | 4.7.4 | Beazer Submit Report Addendum | 0 wks | 72 | Thu 7/31/14 | Thu 7/31/14 | | | | | | | | | | | | | | | | | | | | | | | | |
| 74 | 4.7.5 | Call to discuss Report Addendum | 0 wks | 73 | Tue 8/12/14 | Tue 8/12/14 | | | | | | | | | | | | | | | | | | | | | | | | |
| 75 | 4.8 | Blocks J & K Remediation Design | 12.2 wks | | Mon 6/2/14 | Mon 8/25/14 | | | | | | | | | | | | | | | | | | | | | | | | |
| 76 | 4.8.1 | Access Agreements for Design | 2 wks | | Mon 6/2/14 | Fri 6/13/14 | | | | | | | | | | | | | | | | | | | | | | | | |
| 77 | 4.8.2 | Surveying & Interviews | 5 wks | 76 | Mon 6/16/14 | Fri 7/18/14 | | | | | | | | | | | | | | | | | | | | | | | | |
| 78 | 4.8.3 | Preliminary Design | 5 wks | 77SS+1 wk | Mon 6/23/14 | Fri 7/25/14 | | | | | | | | | | | | | | | | | | | | | | | | |
| 79 | 4.8.4 | Pre-Final Design and Access | 7 wks | 78SS+1 wk | Mon 6/30/14 | Fri 8/15/14 | | | | | | | | | | | | | | | | | | | | | | | | |
| 80 | 4.8.5 | RAWP: Block J | 0 wks | | Fri 7/25/14 | Fri 7/25/14 | | | | | | | | | | | | | | | | | | | | | | | | |
| 81 | 4.8.6 | Final Design & RAWP Approval: Block J | 1 wk | 80 | Fri 7/25/14 | Thu 7/31/14 | | | | | | | | | | | | | | | | | | | | | | | | |
| 82 | 4.8.7 | RAWP: Block K | 0 days | 79 | Wed 8/20/14 | Wed 8/20/14 | | | | | | | | | | | | | | | | | | | | | | | | |
| 83 | 4.8.8 | Final Design and RAWP Approval: Block K | 4 days | 82 | Wed 8/20/14 | Mon 8/25/14 | | | | | | | | | | | | | | | | | | | | | | | | |
| 84 | 4.9 | Community Meetings | 16.4 wks | | Fri 10/25/13 | Tue 2/18/14 | | | | | | | | | | | | | | | | | | | | | | | | |
| 85 | 4.9.1 | Community Meeting: Landscaping Workshop - City (Oct 26) | 2 days | | Fri 10/25/13 | Mon 10/28/13 | | | | | | | | | | | | | | | | | | | | | | | | |
| 86 | 4.9.2 | Community Meeting (Jan 18 2014) | 2 days | | Fri 1/17/14 | Mon 1/20/14 | | | | | | | | | | | | | | | | | | | | | | | | |
| 87 | 4.9.3 | Community Meeting (Feb 18 2014) | 0 wks | | Tue 2/18/14 | Tue 2/18/14 | | | | | | | | | | | | | | | | | | | | | | | | |
| 88 | 4.10 | Implementation of Remedial Action | 39 wks | | Mon 2/17/14 | Fri 11/14/14 | | | | | | | | | | | | | | | | | | | | | | | | |
| 89 | 4.11 | Pre-Final Inspection | 0 wks | 88 | Tue 11/18/14 | Tue 11/18/14 | | | | | | | | | | | | | | | | | | | | | | | | |
| 90 | 4.12 | Prepare Implementation Report | 24 wks | 88 | Mon 11/17/14 | Fri 5/1/15 | | | | | | | | | | | | | | | | | | | | | | | | |
| 91 | 4.13 | Submit Implementation Report | 0 wks | 90 | Fri 5/1/15 | Fri 5/1/15 | | | | | | | | | | | | | | | | | | | | | | | | |
| 92 | | | | | | | | | | | | | | | | | | | | | | | | | | | | | | |
| 93 | 5 | Cutoff Wall and Stormwater Controls: DESIGN TRACK #2 | 72 wks | | Wed 12/17/14 | Tue 5/3/16 | | | | | | | | | | | | | | | | | | | | | | | | |
| 94 | 5.1 | Pre-Design Work Plan | 18 wks | 15 | Wed 12/17/14 | Tue 4/21/15 | | | | | | | | | | | | | | | | | | | | | | | | |
| 95 | 5.2 | Submit Pre-Design Work Plan | 0 wks | 94 | Tue 4/21/15 | Tue 4/21/15 | | | | | | | | | | | | | | | | | | | | | | | | |
| 96 | 5.3 | Review and Approval | 3 wks | 95 | Wed 4/22/15 | Tue 5/12/15 | | | | | | | | | | | | | | | | | | | | | | | | |
| 97 | 5.4 | EPA Approval of Pre-Design Work Plan | 0 wks | 96 | Tue 5/12/15 | Tue 5/12/15 | | | | | | | | | | | | | | | | | | | | | | | | |
| 98 | 5.5 | Pre-Design Investigation | 16 wks | 97 | Wed 5/13/15 | Tue 9/1/15 | | | | | | | | | | | | | | | | | | | | | | | | |
| 99 | 5.6 | Preliminary Design | 5 wks | 98 | Wed 9/2/15 | Tue 10/6/15 | | | | | | | | | | | | | | | | | | | | | | | | |
| 100 | 5.7 | Submit Preliminary Design | 0 wks | 99 | Tue 10/6/15 | Tue 10/6/15 | | | | | | | | | | | | | | | | | | | | | | | | |
| 101 | 5.8 | Review and Comment | 4 wks | 100 | Wed 10/7/15 | Tue 11/3/15 | | | | | | | | | | | | | | | | | | | | | | | | |
| 102 | 5.9 | Pre-Final Design | 5 wks | 101 | Wed 11/4/15 | Tue 12/8/15 | | | | | | | | | | | | | | | | | | | | | | | | |
| 103 | 5.10 | Review and Comment | 5 wks | 102 | Wed 12/9/15 | Tue 1/12/16 | | | | | | | | | | | | | | | | | | | | | | | | |
| 104 | 5.11 | Final Design | 5 wks | 103 | Wed 1/13/16 | Tue 2/16/16 | | | | | | | | | | | | | | | | | | | | | | | | |
| 105 | 5.12 | Review | 3 wks | 104 | Wed 2/17/16 | Tue 3/8/16 | | | | | | | | | | | | | | | | | | | | | | | | |
| 106 | 5.13 | EPA Approval of Final Design | 0 wks | 105 | Tue 3/8/16 | Tue 3/8/16 | | | | | | | | | | | | | | | | | | | | | | | | |
| 107 | 5.14 | Prepare RAWP | 8 wks | 106 | Wed 3/9/16 | Tue 5/3/16 | | | | | | | | | | | | | | | | | | | | | | | | |
| 108 | 5.15 | Submit RAWP | 0 wks | 107 | Tue 5/3/16 | Tue 5/3/16 | | | | | | | | | | | | | | | | | | | | | | | | |
| 109 | | | | | | | | | | | | | | | | | | | | | | | | | | | | | | |
| 110 | 6 | In-Situ Geochemical Stabilization (ISGS): DESIGN TRACK #3 | 162.4 wks | | Thu 2/7/13 | Fri 3/18/16 | | | | | | | | | | | | | | | | | | | | | | | | |
| 111 | 6.1 | Process Area | 120.4 wks | | Thu 2/7/13 | Fri 5/29/15 | | | | | | | | | | | | | | | | | | | | | | | | |
| 112 | 6.1.1 | EPA Approval of ISGS Demonstration Work Plan (2012) | 0 wks | | Thu 2/7/13 | Thu 2/7/13 | | | | | | | | | | | | | | | | | | | | | | | | |
| 113 | 6.1.2 | Preliminary Design (included in Demonstration Work Plan) | 0 wks | | Thu 2/7/13 | Thu 2/7/13 | | | | | | | | | | | | | | | | | | | | | | | | |
| 114 | 6.1.3 | Characterization and DNAPL Recovery (began 2012) | 32 wks | | Thu 2/7/13 | Wed 9/18/13 | | | | | | | | | | | | | | | | | | | | | | | | |
| 115 | 6.1.4 | Characterization Report and Pilot Test Plan | 11.8 wks | 114 | Thu 9/19/13 | Tue 12/10/13 | | | | | | | | | | | | | | | | | | | | | | | | |
| 116 | 6.1.5 | Submit Characterization Report and Pilot Test Plan | 0 wks | 115 | Tue 12/10/13 | Tue 12/10/13 | | | | | | | | | | | | | | | | | | | | | | | | |
| 117 | 6.1.6 | Review and Approval of Pilot Test Plan | 10 wks | 116 | Wed 12/11/13 | Tue 2/18/14 | | | | | | | | | | | | | | | | | | | | | | | | |
| 118 | 6.1.7 | Technical Working Group Meeting | 0 wks | | Wed 12/18/13 | Wed 12/18/13 | | | | | | | | | | | | | | | | | | | | | | | | |
| 119 | 6.1.8 | Pilot Injection Testing | 15 wks | 117 | Mon 3/17/14 | Fri 6/27/14 | | | | | | | | | | | | | | | | | | | | | | | | |
| 120 | 6.1.8.1 | Pre-Pilot Testing & Chemical Delivery | 1 wk | | Mon 3/17/14 | Fri 3/21/14 | | | | | | | | | | | | | | | | | | | | | | | | |
| 121 | 6.1.8.2 | Pilot Injections | 3 wks | 120 | Mon 3/24/14 | Fri 4/11/14 | | | | | | | | | | | | | | | | | | | | | | | | |
| 122 | 6.1.8.3 | Borings in Injection Area | 1 wk | 121FS+10 wk | Mon 6/23/14 | Fri 6/27/14 | | | | | | | | | | | | | | | | | | | | | | | | |
| 123 | 6.1.9 | Technical Working Group Meeting | 0 wks | | Thu 7/10/14 | Thu 7/10/14 | | | | | | | | | | | | | | | | | | | | | | | | |
| 124 | 6.1.10 | Pre-Final Design | 44 wks | 121 | Mon 4/14/14 | Fri 2/13/15 | | | | | | | | | | | | | | | | | | | | | | | | |
| 125 | 6.1.11 | Submit Pre-Final Design | 0 wks | 124 | Fri 2/13/15 | Fri 2/13/15 | | | | | | | | | | | | | | | | | | | | | | | | |
| 126 | 6.1.12 | Review and Comment | 6 wks | 125 | Mon 2/16/15 | Fri 3/27/15 | | | | | | | | | | | | | | | | | | | | | | | | |
| 127 | 6.1.13 | Final Design and RAWP | | | | | | | | | | | | | | | | | | | | | | | | | | | | |

GAINESVILLE REMEDIAL DESIGN

| ID | WBS | Task Name | Duration | Predecessors | Start | Finish | 2013 | | | | 2014 | | | | 2015 | | | | 2016 | | | | 2017 | | | | 2018 | | | |
|-----|--------|-------------------------------------------------------------|----------|--------------|--------------|--------------|-------|-------|-------|-------|-------|-------|-------|-------|-------|-------|-------|-------|-------|-------|-------|-------|-------|-------|-------|-------|-------|-------|-------|-------|
| | | | | | | | Qtr 4 | Qtr 1 | Qtr 2 | Qtr 3 | Qtr 4 | Qtr 1 | Qtr 2 | Qtr 3 | Qtr 4 | Qtr 1 | Qtr 2 | Qtr 3 | Qtr 4 | Qtr 1 | Qtr 2 | Qtr 3 | Qtr 4 | Qtr 1 | Qtr 2 | Qtr 3 | Qtr 4 | Qtr 1 | Qtr 2 | Qtr 3 |
| 191 | 9.8.1 | Draft Proprietary Controls Package | 13 wks | 189 | Mon 6/22/15 | Fri 9/18/15 | | | | | | | | | | | | | | | | | | | | | | | | |
| 192 | 9.8.2 | Submit Draft Proprietary Controls Package | 0 wks | 191 | Fri 9/18/15 | Fri 9/18/15 | | | | | | | | | | | | | | | | | | | | | | | | |
| 193 | 9.8.3 | Review and Updating | 8 wks | 192 | Mon 9/21/15 | Fri 11/13/15 | | | | | | | | | | | | | | | | | | | | | | | | |
| 194 | 9.8.4 | Update Title Search and Prepare Public Notice | 8 wks | 193 | Mon 11/16/15 | Fri 1/8/16 | | | | | | | | | | | | | | | | | | | | | | | | |
| 195 | 9.8.5 | Beazer Publish Public Notice | 0 wks | 194 | Fri 1/8/16 | Fri 1/8/16 | | | | | | | | | | | | | | | | | | | | | | | | |
| 196 | 9.8.6 | Public Comment Period | 4.4 wks | 195 | Mon 1/11/16 | Tue 2/9/16 | | | | | | | | | | | | | | | | | | | | | | | | |
| 197 | 9.8.7 | Address Comments and Execute Restrictive Covenant | 5 wks | 196 | Wed 2/10/16 | Tue 3/15/16 | | | | | | | | | | | | | | | | | | | | | | | | |
| 198 | 9.8.8 | Record Restrictive Covenant at Alacha County Clerk of Court | 0 wks | 197 | Tue 3/15/16 | Tue 3/15/16 | | | | | | | | | | | | | | | | | | | | | | | | |
| 199 | 9.8.9 | Prepare Final Proprietary Controls Package | 8.6 wks | 198 | Wed 3/16/16 | Fri 5/13/16 | | | | | | | | | | | | | | | | | | | | | | | | |
| 200 | 9.8.10 | Submit Final Proprietary Controls Package | 0 wks | 199 | Fri 5/13/16 | Fri 5/13/16 | | | | | | | | | | | | | | | | | | | | | | | | |



Red text used for current tasks

Task Milestone Summary